



The perfect study environment in a major university city





# THE SCHOOL

Established in 1969, The English Language Centre Bristol is a family-run school which offers intensive General English and Examination Preparation courses. We are a member of TEN (The English Network), IALC (International Association of Language Centres) and English UK. We have been inspected by the Independent Schools Inspectorate (ISI), accredited by the British Council and are a highly trusted sponsor, licenced by the UK Border Agency to enrol international students under Tier 4 of the Points Based System.

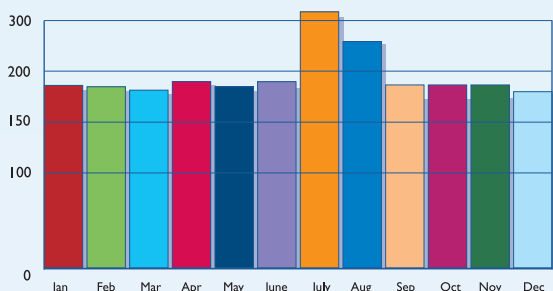


*The school is located in two fine old buildings close to the University in Clifton, one of Bristol's most attractive areas.*



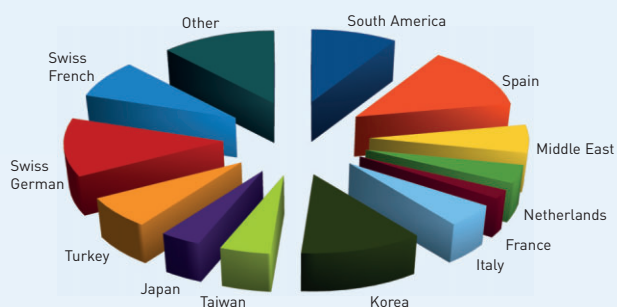
## Student numbers 2012

Average number of students: 185 (310 in July and August)



## Student nationalities 2012

(percentages fluctuate according to season)







*We believe that personal care and attention are essential and we will do everything we can to ensure that the time you spend in Bristol is one of the most productive and enjoyable times in your life.*



An average of 185 students from 27 different countries. Even in winter the school remains full.

Our school is suitable for motivated adult individuals.

We do not accept large groups, juniors or part-time students as this could disturb the special atmosphere in the school.

Pembroke House



Abon House



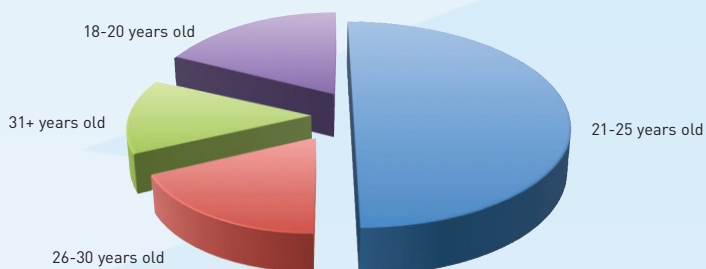
Coulson (Summer) Centre



*Welcome talk on the first day*

## Student ages 2012

Average age: 23 Minimum age: 18





# BRISTOL

Bristol is an exciting university city and the cultural centre of the west of England, famous for its theatres, shopping, night life and music scene.

With a population of 500,000, Bristol is the second biggest city in the south of England after London, which is only 90 minutes away.

Bristol has all the attractions of a major city, but it is easy to live here. Everything is within walking distance, including your accommodation.



*Park Street and the University Law Library*



*Bristol is a famous ballooning centre*

*Bristol is famous for its music scene*



*\*Massive Attack, by kind permission of the Bristol Evening Post*

*Night life in the harbour*







*Royal York Crescent*



*SS Great Britain*



*Bristol Cathedral dates from the 11<sup>th</sup> century*



Bristol International Airport has flights to 73 cities in 22 European countries. As well as making it easy to get here, it offers great opportunities for you to visit other European destinations.

There are few language schools in Bristol, so it is easier for you to meet English people.

Bristol is a wealthy city with relatively low unemployment, so if you are from the EEA (European Economic Area) and you have the right to work, it is not too difficult to find a part-time job.



# COURSES

All courses include a minimum of 21 full hours of classroom time per week + daily homework. There are lessons every morning and on four afternoons a week.

There are 6 levels from Elementary to Advanced, with several classes at each level.

On the first day, we test you so that we can place you in a class at the right level.

Average class size: 10. Maximum: 12 (occasionally up to 14).

As part of your course you can prepare for the Cambridge First Certificate, Advanced and Proficiency exams, BULATS (Business Language Testing Service) and IELTS. Study materials are also available for TOEFL and TOEIC.



## WHAT IS YOUR LEVEL NOW?

Level (CEF*)	Can do	Cambridge exam**	IELTS**
<b>Elementary (A2)</b>	Can understand basic sentences and frequently used expressions. Can communicate in simple situations.		
<b>Pre-Intermediate (A2)</b>	Can understand and communicate in routine situations. Can read and write about simple subjects.		3
<b>Intermediate (B1)</b>	Can make effective and independent use of the language in familiar situations although communication is still sometimes difficult.	<b>PET</b> Preliminary English Test	4
<b>Upper-Intermediate (B2)</b>	Can understand the main ideas of complex text. Can interact with fluency and spontaneity without strain and produce clear, detailed writing on a range of subjects.	<b>FCE</b> First Certificate in English	5
<b>Pre-Advanced (C1)</b>	Can understand a wide range of longer, demanding texts. Can speak accurately, fluently and spontaneously and produce clear, well-structured writing on complex subjects.	<b>CAE</b> Certificate of Advanced English	6
<b>Advanced (C2)</b>	Can understand with ease virtually everything heard or read. Can produce language spontaneously, fluently and precisely when speaking and writing.	<b>CPE</b> Certificate of Proficiency in English	7 8

\* Common European Framework

\*\* Details of exam dates and fees are in the enrolment form.



# SAMPLE TIMETABLE

09.15	10.15	11.00 11.30	12.45 14.00	15.30 15.45	17.30
<b>Grammar</b> using a recently published course book	<b>Listening / Pronunciation practice</b>  can include work in the multimedia centre	<b>Reading/ Vocabulary building/Speaking skills</b>	<b>Monday / Wednesday afternoons</b> Writing skills/exam practice <hr/> <b>Tuesday / Thursday afternoons</b> Conversation Skills (for intermediate level and below)  Electives (for upper-intermediate level and above) - options include Business English, Academic English, British Life and Culture, Film Studies and Conversation	Optional supervised self-study  Conversation club (2 hours a week)  Daily homework	



Supervised self-study is an integral part of the course



Conversation club twice a week

## Included in the programme:

Conversation club (2 hours a week).

Personal study programme with 4 hours' supervised self-study.

Students whose level is upper-intermediate (B2) or above can choose from a range of electives on two afternoons a week, including Business English and British Life and Culture. During this time, lower level students focus on developing conversation skills.

You are given a course book every 12 weeks, a file, supplementary teaching materials and a certificate when you leave.

Film Club – every Friday afternoon.

Wi-fi and two multimedia centres with free internet access.

Free e-learning service from the moment you enrol.



Free Wi-fi and 2 multimedia centres





# EXAMINATION PREPARATION

## CAMBRIDGE FIRST CERTIFICATE, ADVANCED, PROFICIENCY, BULATS AND IELTS

Minimum period of enrolment: 4 weeks

Students should be at least upper-intermediate level (B2) before joining these courses.

21 hours per week (includes 3 hours of electives)

For more information about exam courses, see the school website (Courses / Examination Preparation)

## IELTS PREPARATION / ACADEMIC ENGLISH – How long will it take?

You generally need an IELTS score of 6.5 before going to University or 5.5 if you wish to take a foundation course or a vocational programme. It normally takes 12 weeks to complete each level and improve your IELTS score by 1 point, so it is important that you know what level you are now and that you work out realistically how long it will take you to reach your goal.

Level	Pre-Intermediate (A2)		Intermediate (B1)		Upper-Intermediate (B2)		Pre-Advanced (C1)
	12 weeks		12 weeks		12 weeks		12 weeks
IELTS score	3.5		4	4.5	5	5.5	6 6.5
Courses	General English				IELTS preparation / Academic English		
					<div>Vocational courses</div>		
					<div>University foundation programme</div>		
					<div>University graduate, post-graduate and doctorate programmes</div>		



*The school has a great team of qualified experienced teachers who are dedicated to helping students at all times*





# ACCOMMODATION

**All accommodation is arranged by the school and is in single rooms, usually within walking distance of the school. If you choose to travel by bus, the cost of a weekly bus pass is currently £14.50.**

Homestay. Includes bed, breakfast and evening meal.

Independent student houses and flats (self-catering).

Goldney Hall University Residence (self-catering). Available July – September.



*St John's House has 28 student rooms*



*Independent student houses and flats are popular, so if you want to live here, book early.*



*Goldney Hall - beautiful grounds, 100 single rooms and only 10 minutes' walk from the school*



*Accommodation is so important. If you are not happy where you live, you will not be happy in the school. Since Bristol is a prosperous city with very few language schools, the standard of accommodation is unusually high.*



*Staying with one of our caring homestays represents great value for money and is the best way to experience the English way of life.*



# SOCIAL PROGRAMME

An exciting social programme is arranged by our teachers every week of the year.

The weekly programme includes regular sports, two evening activities, Friday film club and an excursion on Saturdays.

There are 50,000 English students in Bristol and you can join the social clubs at the University – the perfect way to make English friends.

Bristol is famous for its night life and music scene.



Two evening activities every week



Football with the teachers on Thursdays



An excursion every Saturday

## TYPICAL EXAMPLE OF THE SOCIAL PROGRAMME

<b>Monday</b>	14.00	Walking Tour of Bristol for new students	Free
<b>Tuesday</b>	20.00	Welcome evening at the Avon Gorge Hotel	Free
<b>Thursday</b>	19.30	Scottish Country Dancing	£3.00
<b>Friday</b>	14.00	Film Club at Abon House	Free
<b>Saturday</b>	09.00	Excursion to Oxford	£17.00
<b>Tuesday</b>	16.30	Harbour boat trip	£6.00
<b>Thursday</b>	20.00	International Food Party	Free
<b>Friday</b>	14.00	Film Club at Abon House	Free
<b>Saturday</b>	09.00	Excursion to London	£18.00



Other popular activities include: excursions to Bath, Wales, Stonehenge, Stratford, theatre visits, karaoke and jazz at the Old Duke.





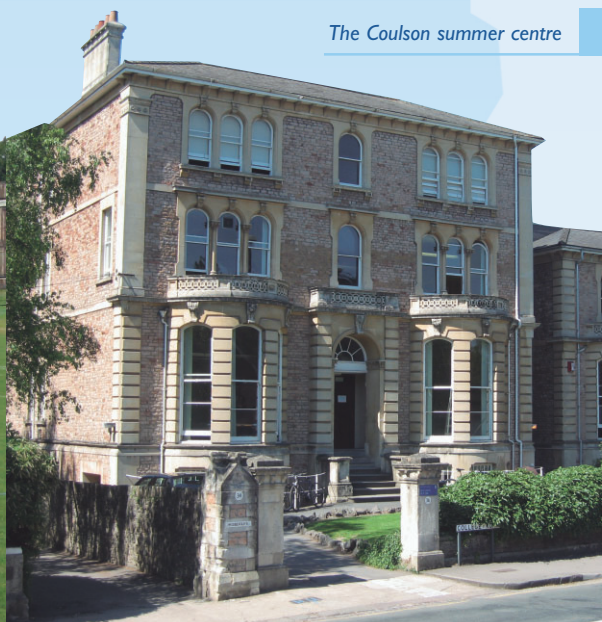
The University of Bristol is one of the top universities in the country and you can use the facilities of the University Students' Union.



You can join the University hockey club



The Coulson summer centre



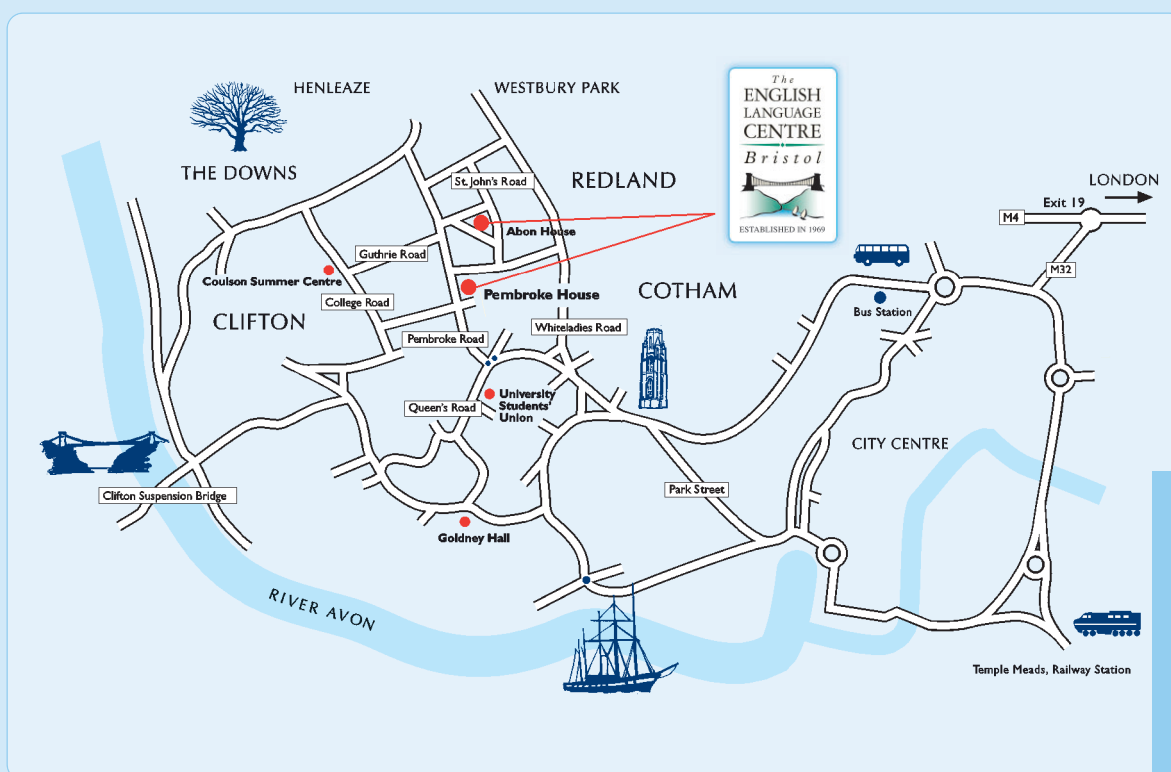
## SUMMER COURSES

During July and August we open our summer centre in Clifton College with its beautiful grounds and wonderful facilities.



## HOW TO GET HERE

There are direct buses to Bristol from both Heathrow and Gatwick Airports. Bristol International Airport is only 20 minutes from the school.



The school is located close to the University in Clifton, one of the best areas of the city.



Please scan this QR code on your smartphone to find out more about The English Language Centre Bristol.

**The English Language Centre Bristol**, 44 Pembroke Road, Clifton, Bristol BS8 3DT England  
Tel: 44 117 970 7050 Fax: 44 117 923 9638 Email: [info@elcbristol.co.uk](mailto:info@elcbristol.co.uk) Web: [www.elcbristol.co.uk](http://www.elcbristol.co.uk)

