



Thinking in English

English UK 2015

Courses for adults in
London, Oxford, Brighton
& Bournemouth

European English Language School
Winner 2010 & 2012



British Study Centres
School of English

Learning to live in English – your most vital life skill




Andrew Roper
Managing Director



It's amazing! Every week, hundreds of eager, curious new students come through our doors, looking for the key to their future. They recognise that to be taken seriously on the international stage, they have to be able to use the world's no.1 international language.

Understanding how to use English will be vital for their future careers, future lives, future happiness. Well, they've come to the right place. In all of our schools, our teachers and support staff have a wealth of international living and working experience. Many have taught English abroad and can themselves speak foreign languages. They can easily empathise with students and the difficulties they regularly face. But the caring doesn't stop when our students leave the classroom.

As well as our wide range of English classes, we also organise an array of social activities which provide our students with the perfect opportunity to meet one another, socialise, take part in fun activities, see fascinating places and of course, practise their English. 

Learning in English, living in English... thinking in English.

Contents

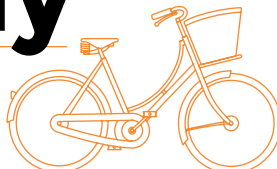
London	4
Oxford	8
Brighton	12
Bournemouth	16
Course options	20
General English	22
Exam preparation (IELTS, TOEIC, TOEFL, Cambridge FCE & CAE)	24
Specialist courses	26
myBSC – study platform & portal to the BSC world	28
FAQs	30



British Study Centres
GROUP

A member of the British Study Centres
group of colleges

Great reasons to choose British Study Centres



Family firm

British Study Centres is a family-owned company founded in the 1930's by Joseph Cleaver and now run by his grandson, Simon Cleaver. This family ethos is reflected in the warm personal welcome you will receive at our schools. Our objective is to make you feel at home with us and to ensure you have an enjoyable and worthwhile stay here in the UK.

Award-winning schools

BSC was voted 'Star' English Language School Europe in 2010 & 2012 (finalist in 2009, 2011, 2013 and 2014) and 'Star' Junior Course for under 18s in 2012 (finalist in 2010 and 2013). These awards recognise English language schools across the world for their high standard of provision and are voted for by language professionals and agencies worldwide.

Your world. My world.

BSC is committed to sustainable development. Our privileged position as educators is both a responsibility and an excellent opportunity to raise awareness and positively influence corporate social responsibility behaviour in the English language sector.

As part of our commitment to minimise the negative impact on the environment, we focus on several important aspects

of our day-to-day operations: utilities, recycling and paper.

Community: BSC supports fund-raising events and charities which, like our students, come from all over the world.

myBSC

An eLearning platform and portal to the BSC world. The system has been designed to support all areas of your experience with British Study Centres. All students have access to our Virtual Learning Environment (VLE) from the moment any of our courses are booked.

Accreditations & memberships

BSC is accredited by the British Council for the teaching of English as a foreign language and is a member of English UK and ALTO.

BSC is registered as a Highly Trusted Sponsor by the UK Border Agency following successful inspections by the Independent Schools Inspectorate (ISI).

Exciting UK locations

Each of our schools has its own character and personality, and yet each follows the same BSC philosophy.

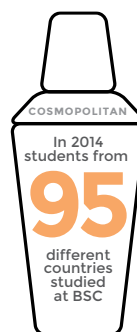
We offer high-quality courses and facilities in four of the most exciting locations in the UK – London, Brighton, Oxford and Bournemouth.

Job Club

A free service aiming to help students who are looking for a job in order to develop their English skills and to earn a little in order to support themselves while in the UK (service available to EEA and Swiss nationals or Youth Mobility Scheme Visa holders (Tier 5) in full-time education in their country).

Nationality mix

We are really proud to have students from around 35 countries at any one time! This is a great opportunity to get to know people from different cultures and make your stay at British Study Centres a truly unforgettable experience!



Effective teaching

Classes are small and multinational with an average of 11 students (max. 14). This enables our teachers to focus on your individual aims and interests to help you improve your English in a way which is relevant to you.

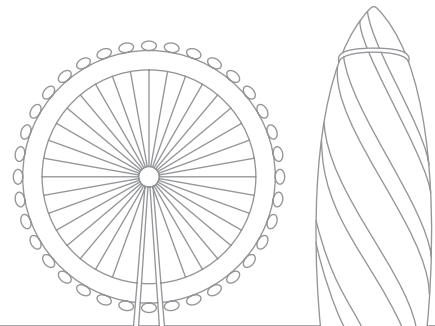


British Study Centres is committed to making a positive impact on our environment. This brochure has been printed using FSC certified paper from sustainable forests.



British Study Centres Schools of English are members of English UK and accredited by the British Council

London – the UK's iconic capital



Study in London. Live London. Love London.
This incredible city will help shape your future.

KEY FACTS

Number of students

- Peak season: 450
- Low season: 300

Age of students

- Average: 25

Location

- The school is centrally located in London's world-famous West End, and within easy walking distance of Marylebone High Street and Oxford Street.

Extra options

- Specialist Business English courses
- English Plus Football (see page 27)
- Job Club (see page 27)
- Unpaid internship (see page 27)

Good to know

- Large in-house café with internet zone
- Free wireless connection

Exterior of our London school



Outstanding location and facilities

Many of London's sights are within walking distance of our central London English language school, which is located in the heart of the city, close to Oxford Street and Baker Street. Bond Street and Baker Street underground stations are just 5 minutes' walk from the school.

The school is just 2 minutes' walk from Marylebone High Street, which was recently voted the best High Street in London for its sophisticated atmosphere and unique combination of designer shops, restaurants and cafés.

Facilities are shared with West London College (WLC), which provides career training to Bachelor's and Master's Degree level (Business Studies, Computer Training, Travel & Tourism and Fashion).



Bright attractive classrooms

Our school is housed on 5 floors and has 24 spacious, comfortable classrooms. At peak times we have the use of up to 33 classrooms at our main building, Hannah House, using classes from WLC. We also provide up to 9 teaching rooms at our additional centre, the School of Economic Science, located 5 minutes on foot from our main building.



Library & study centre

The school is equipped with a university-style library and a self-access centre which has a wide range of self-study material and exam practice books together with 14 computers which all have self-study programs. An experienced teacher is always there to help you with any questions you have about the books or your studies.



Free Internet zone

The computer area is fitted with 40 computers, many with headphones and webcams for an enhanced online experience, and offers free high-speed internet connection. Laptop users can also enjoy free Wi-Fi connection in the café and library.



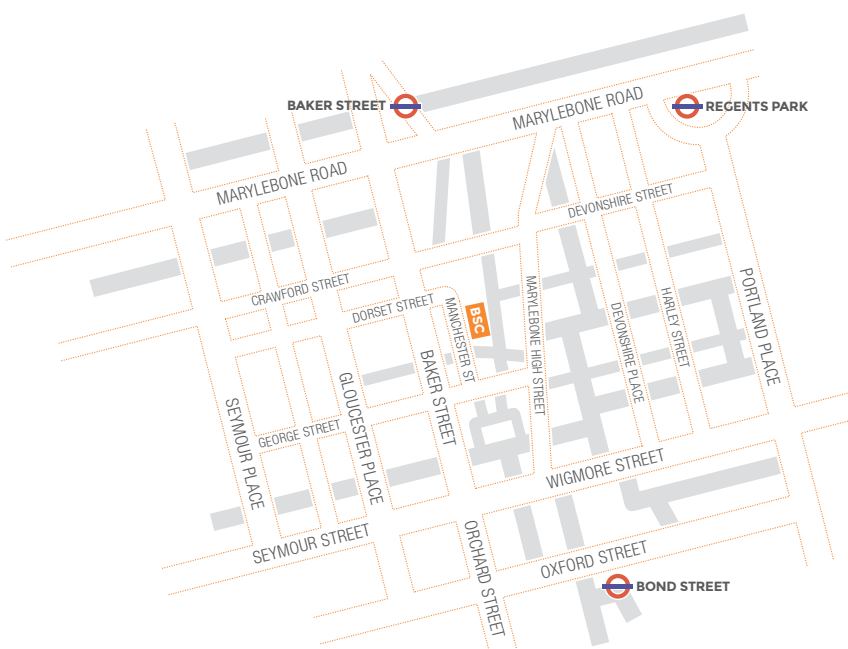
School café.

The school has a 70-seater in-house café with sofa area and wide-screen TV, where students can relax, have lunch and socialise with friends during breaks and after lessons.









In 2014, we taught more than
 2,600 students from over 95 countries.

Top 10 Nationalities 2014



Fancy a walk?

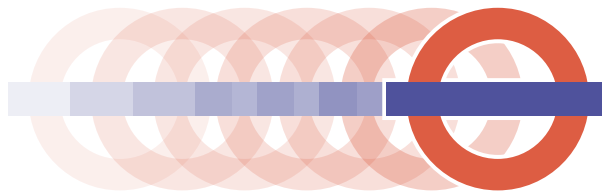
The school's central location means tube stations and popular places are within easy walking distance of the school. Here are just a few of them.

-  Baker Street: 5 minutes
-  Bond Street: 5 minutes
-  Oxford Circus: 10 minutes
-  Oxford Street: 5 minutes
-  Covent Garden: 25 minutes
-  Piccadilly Circus: 20 minutes



The Houses of Parliament & Big Ben

- 1 British Museum
- 2 National Gallery
- 3 Tate Modern
- 4 Natural History Museum
- 5 The London Eye
- 6 Science Museum
- 7 The Tower of London
- 8 National Maritime Museum
- 9 Westminster Abbey
- 10 Madame Tussaud's



**DID
YOU
KNOW** ?

During the 2012 Olympics, more people used the London Underground than at any other time in its 150-year history. On Wednesday 1 August 4.25 million passengers used the Tube, and 4.31 million passengers used it the day after.

Discovering London

Some say London is the centre of the world! The city has so much history, heritage and culture and so much to see and do with world-famous landmarks such as Big Ben, Buckingham Palace and the London Eye. Enjoy London's nightlife, fine restaurants and the wide-open spaces of Europe's 'greenest' city. London also enjoys an eclectic mix of people and cultures making it a truly cosmopolitan city.

Weekly social programme

The school runs an exciting weekly social programme. A typical month may include trips to the cinema, a boat party on the River Thames, a visit to the Houses of Parliament, the BBC studios or a picnic or sports afternoon in Regent's Park. In addition, there are weekend trips to places of interest, such as Bath and Stonehenge, Cambridge, Oxford and even Paris, Scotland or Amsterdam. A small charge (£3 – £15) is made for some activities, others are free of charge. Prices for full-day and weekend trips around the UK & Europe range from £30-£250.



The Southbank



The London Eye



Horseguard's Parade



Year-round residence,
Student Castle



Standard student house



Year-round residence,
Student Castle

Accommodation – what you need to know

Some of our accommodation is booked via our experienced partner agencies, HFS London, UK Guests or All About Homestay. All accommodation is inspected by our Accommodation Officers on a regular basis and is within reasonable and safe walking distance from a tube station. Student house and residence accommodation options are only available for students over 18.

Useful tips and advice

We always try to place students on a direct Underground line to the school. Baker Street station is 5 minutes walk from the school and is served by the Bakerloo, Jubilee, Hammersmith & City, Metropolitan and Circle lines.

Bond Street is a 5 minute walk from the school and is served by the Central and Jubilee lines. The most cost-efficient way to travel within

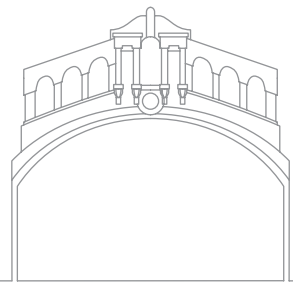
London is to buy a weekly or monthly Travelcard. Please see the Transport for London website, www.tfl.gov.uk for up-to-date prices. Students enrolled on a course of 14 weeks or more can save up to 30% by applying for an 18+ Student Oyster photocard.

For further information please enquire at the school's reception on arrival.

	HOMESTAY	STUDENT HOUSE	YEAR-ROUND RESIDENCE
AVAILABILITY	<ul style="list-style-type: none"> All year round 	<ul style="list-style-type: none"> All year round 	<ul style="list-style-type: none"> All year round
LOCATION	<p>S The majority of our families are located in zones 3-4 and occasionally 5.</p> <p>E Zones 2-3. Areas include: Willesden Green, Westbourne Park and West Hampstead.</p>	<p>S The majority of our student houses are located in Zone 3. Areas include: Leyton, Leytonstone and Walthamstow.</p> <p>★ Our superior student house is located in North West London in the lively Borough of Camden and provides easy access to central London.</p>	<ul style="list-style-type: none"> Located near Aldgate East, Aldgate & Tower Hill Zone 1 underground stations, Student Castle provides easy access to central London and the school. Close to shops, markets, restaurants, bars and galleries in Shoreditch and Brick Lane.
HOME TO SCHOOL: average public transport journey	<p>S 45 minutes</p> <p>E 45 minutes</p>	<p>S 45 minutes</p> <p>★ 35 minutes</p>	<ul style="list-style-type: none"> Aldgate East/Aldgate/Tower Hill: 30 minutes
BOOKING OPTIONS	<p>S & E Single room</p> <p>S Shared room (only available to 2 students booking together)</p>	<ul style="list-style-type: none"> Single room Shared room (only available to 2 students booking together) 	<ul style="list-style-type: none"> Single en-suite room
MEAL PLANS	<ul style="list-style-type: none"> Half board Breakfast only <p>S Self-catering</p>	<ul style="list-style-type: none"> Self-catering: kitchens are modern and equipped with cookers, cutlery, cooking utensils, linen 	
BATHROOM	<p>S Shared</p> <p>E Private bathroom</p>	<p>S Shared. Typically student houses have two bathrooms</p> <p>★ En-suite</p>	<ul style="list-style-type: none"> All rooms are en-suite
INTERNET ACCESS & OTHER FACILITIES	<ul style="list-style-type: none"> Internet access is available at most homestays. Please check with us at the time of booking. 	<ul style="list-style-type: none"> Free internet access 	<ul style="list-style-type: none"> Free internet access Access to common rooms and modern on-site gym
OTHER INFORMATION	<ul style="list-style-type: none"> Bed linen and towels provided 	<ul style="list-style-type: none"> Only available to students over 18 years old Bed linen is provided (but please bring your own towels) 	

S Standard **E** Executive **★** Superior

Oxford – the UK's no.1 student city



40,000 students and 39 historic university colleges make Oxford a magical place to study English

KEY FACTS

Number of students

- Peak season: 325
- Low season: 175

Age of students

- Average: 25

Centrally located

- The school is minutes away from main bus & railway stations

Extra options

- Specialist Teacher Training Centre
- Job Club (see page 27)
- Unpaid internships (see page 27)

Good to know

- Comfortable student lounge with wireless internet
- Modern well-resourced study centre
- Stylish exterior roof terrace

Radcliffe Camera



A city made for students

Oxford has a deserved worldwide reputation for the quality of its education. Oxford University is consistently ranked in the top three in the world. The city has a renowned literary heritage. JRR Tolkien, CS Lewis, Philip Pullman and Lewis Carroll are just a few of the famous writers to have been based in Oxford.

The city sits on the banks of the Thames and boasts a variety of world-famous museums, galleries and libraries. Besides the traditional, there are hundreds of modern restaurants, pubs, clubs and riverside cafés to enjoy. Oxford also benefits from excellent road and rail links to London (50 minutes) and the rest of the UK.

All 17 spacious classrooms benefit from networked computers. Several are equipped with interactive whiteboards, which make lessons even more fun.



Central location

We are located in the heart of the city, in the historic St.Giles district, just a few minutes from Christ Church College, where Harry Potter was filmed. Cornmarket, with its shops and cafés, is just 50 metres away. In addition, our Teacher Training centre caters for both UK and overseas teachers wishing to develop their careers.



Fully equipped study centre

Our study centre, The Den, offers a wide range of learning materials, which will help you achieve your goal of becoming a competent user of the English language. There are daily drop-in sessions where a teacher can help answer any questions you may have about your studies.



Free Internet zone & Wi-Fi

The computer room is fitted with 20 modern wide-screen computers and offers free high-speed Internet connection. Laptop users can also enjoy free Wi-Fi connection throughout the building.

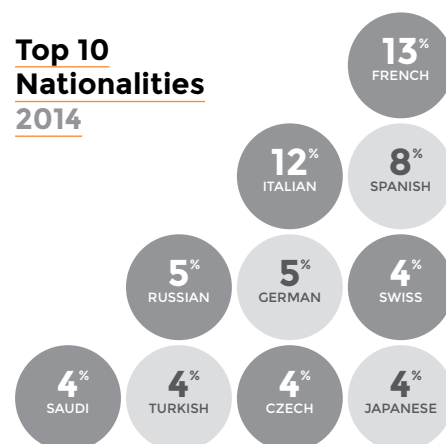


There's always a warm friendly welcome at our stylish Oxford centre. The modern décor compliments our excellent facilities making this an ideal learning environment.



Students enjoy spending time
on our roof terrace

Top 10 Nationalities 2014



Fancy a walk?

Oxford is a perfect walking city. Here are walking times from the school to transport links and some top places of interest.

- Christ Church College: 3 minutes
- Radcliffe Camera: 7 minutes
- Oxford railway station: 10 minutes
- Oxford bus station: 5 minutes
- Ashmolean Museum: 2 minutes
- The Bridge of Sighs: 10 minutes



- 1 Walking tours
- 2 Cream tea
- 3 Bodleian Library
- 4 Dreaming spires
- 5 Harry Potter film locations
- 6 Ashmolean Museum
- 7 Covered market
- 8 Punting
- 9 Pitt Rivers Museum
- 10 River Isis cruise



Oxford University is the world's oldest English speaking university, dating back to 1249. Famous alumni include Sir Tim Berners-Lee, inventor of the World Wide Web.

**DID
YOU
KNOW** ?

Seeing the city, making friends

This is a hugely important aspect of every student's stay with us. Our aim at BSC is to provide as many opportunities to meet other students as possible and get to know the city.

Our weekly social programme is packed with cultural, sporting and leisure activities, including visits to a University college, film club, conversation club, theatre trip, greyhound racing, football, 'punting', museum visits and much more.

MONDAY	TUESDAY	WEDNESDAY	THURSDAY	FRIDAY	SATURDAY	SUNDAY
28	29	30 Cream tea £3.50	31 Magdalen College £3.50	1 Ashmolean Museum FREE	2 Trips around the UK & Europe	3 Trips around the UK & Europe
4	5 Oxford Walking Tour FREE	6 Punting £3-£4	7 Christ Church College £4-£4.50	8 Oxford Museum FREE	9 Trips around the UK & Europe	10 Trips around the UK & Europe
11	12 Oxford Walking Tour FREE	13 Cream tea £3.50	14 Magdalen College £3.50	15 History of Science Museum FREE	16 Trips around the UK & Europe	17 Trips around the UK & Europe
18	19 Oxford Walking Tour FREE	20 Punting £3-£4	21 Christ Church College £4-£4.50	22 Bodleian Library FREE	23 Trips around the UK & Europe	24 Trips around the UK & Europe
25	26 Oxford Walking Tour FREE	27 Cream tea £3.50	28 Magdalen College £3.50	29 Ashmolean Museum FREE	30 Trips around the UK & Europe	31 Trips around the UK & Europe

Sample Social Programme August 2014. A small charge (£3 – £15) is made for some activities, others are free of charge. Prices for full-day and weekend trips around the UK & Europe range from £30 – £250.



Accommodation – what you need to know

All the accommodation is inspected by our Accommodation Officers on a regular basis and is within reasonable and safe walking distance of a bus stop. The student house and residence accommodation options are only available for students who are over 18 years old.

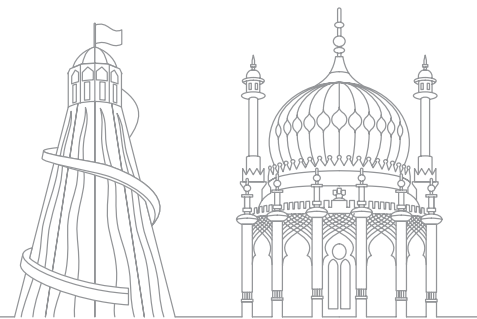
Useful tips and advice

Oxford is the ideal cycling city, it's easy to hire bikes for a day or even for your entire stay. Get your bike from one of Oxford's many bicycle shops. Safety is essential, you will have to buy insurance and hire a helmet, lights and lock. Please ask at reception for more details.

We offer three different types of accommodation, according to your needs. All options offer safe, secure and friendly accommodation.

	HOMESTAY	STUDENT HOUSE	YEAR-ROUND/SUMMER RESIDENCE
AVAILABILITY	<ul style="list-style-type: none"> All year round 	<ul style="list-style-type: none"> All year round 	<ul style="list-style-type: none"> YR Cavalier House SR Slade Park (July & August)
LOCATION	<ul style="list-style-type: none"> S & E <p>All hosts are within safe and reasonable walking distance from a bus stop</p>	<ul style="list-style-type: none"> All student houses are within walking distance from a bus stop or the school 	<ul style="list-style-type: none"> YR Cavalier House is located 15-20 minutes away from the school by public transport. SR Slade Park, our summer residence, is situated approximately 3 kilometres from the school. The average journey time to/from school is 25 minutes by public transport.
HOME TO SCHOOL: average public transport journey	<ul style="list-style-type: none"> S 30-40 minutes E 25 minutes 	<ul style="list-style-type: none"> A short bus ride or 20 minutes on foot 	<ul style="list-style-type: none"> YR 20 minutes SR 35 minutes
BOOKING OPTIONS	<ul style="list-style-type: none"> S & E Single room S Shared room (only available to 2 students booking together) 	<ul style="list-style-type: none"> Single room 	<ul style="list-style-type: none"> Single en-suite room
MEAL PLANS	<ul style="list-style-type: none"> Half board Breakfast only S Self-catering 	<ul style="list-style-type: none"> Self-catering: kitchens are modern and equipped with cookers, cutlery, cooking utensils, linen 	
BATHROOM	<ul style="list-style-type: none"> S Shared E Private bathroom 	<ul style="list-style-type: none"> Shared. Typically student houses have two or three bathrooms. 	<ul style="list-style-type: none"> All rooms are en-suite
INTERNET ACCESS & OTHER FACILITIES	<ul style="list-style-type: none"> Internet access is available at most homestays. Please check with us at the time of booking. 	<ul style="list-style-type: none"> Free internet access 	<ul style="list-style-type: none"> Free internet access
OTHER INFORMATION	<ul style="list-style-type: none"> Bed linen and towels provided 	<ul style="list-style-type: none"> Only available to students over 18 years old Bed linen is provided (but please bring your own towels) 	

Brighton – the UK's coolest city



Outdoor living, walking on the beach, sitting on a café terrace, exploring designer shops – heaven!

KEY FACTS

Number of students

- Peak season: 350
- Low season: 150

Age of students

- Average: 25

Specialist courses

- General English Plus Cooking (see page 26) or Windsurfing (see page 27)

Extra options

- Job Club (see page 27)
- Unpaid internship (see page 27)

Good to know

- Student houses are within walking distance of the school
- Large in-house café and spacious garden
- Free wireless connection



Young, fun and trendy

Known as 'London-by-the-sea', Brighton has two universities and reputedly the youngest population in the UK. It offers the buzz of a large cosmopolitan centre in a relaxing seaside setting. There is much to explore: the famous pier with its fairground attractions, the Marina with its waterside cafés, bars and health clubs and the Sea Life Centre. Brighton & Hove is on the south coast of England. There is a regular direct train service to London which takes just 49 minutes.

Ideal location

Close to Brighton and Hove train stations and within easy reach of the city centre, we are close to all the major attractions of the city centre and even the beach, which is a 15 minute walk away.

We are next to our sister school, Hove College, which offers specialist diploma courses in Web and Graphic Design that can be combined with General English programmes.



Bright classrooms

The school has 22 classrooms, spread over two buildings, all with high windows and natural light, most of them with views of our fantastic garden.



In-house café

The school boasts its own café where students can have a meal and socialise during breaks and after lessons. The food is freshly made in-house and provides a good value for money lunch option.



Learning facilities

- Well-equipped study centre with learning resources, computers & printers
- Free Wi-Fi throughout the school
- Interactive whiteboards in many classrooms

School garden & terrace



Our garden & terrace are the ideal places to have barbeques and socialise with classmates and friends after lessons.



The sofa area is the perfect place to relax or keep in touch with family and friends using the free Wi-Fi.

Top 10 Nationalities 2014



Fancy a walk?

Here are some places within easy walking distance:

- The beach: 15 minutes
- The Lanes, Brighton: 20 minutes
- Brighton city centre: 20 minutes
- Brighton Pier: 25 minutes
- Brighton Pavilion: 25 minutes



Students at Brighton beach



Red Nose charity event

BSC supports Save the Children

Throughout the year our schools participate in many fundraising events to support charities such as Cancer Research, Save the Children and Amnesty International. Last year BSC helped those charities raise over £2000! Staff and students at BSC Brighton managed to raise more than £550 towards Comic Relief Charity on Red Nose Day last year.

In addition, British Study Centres has a chosen charity, the Hotcourses Foundation, which supports children in Africa that have a limited access to education. BSC is trying to help by making annual donations to the Foundation.

Packed social programme

Our weekly social programme offers a fantastic range of events. Brighton is the perfect place to enjoy the best of British sun and seaside. Whether it's volleyball on the beach beside Brighton's famous pier, barbecues in the back garden of the school's premises, or even wandering around the magnificent Royal Pavilion, our students and staff have a great time.

A small charge (£3 – £8) is made for some activities, while others are free of charge. Prices for full-day and weekend trips around the UK & Europe range from £30-£250.



- 1 Brighton beach
- 2 Brighton Pier/Brighton Wheel
- 3 Royal Pavilion
- 4 The historic Lanes for boutique shopping
- 5 Brighton Museum and Art Gallery
- 6 Brighton Sea Life Centre
- 7 Brighton Marina
- 8 England's biggest arts festival
- 9 Brighton Pride
- 10 Brighton & Hove FC – Championship football



Students in the school garden

The social programme includes regular barbecues and international food parties



Typical student house bedroom



Typical student house kitchen



Free Wi-Fi in student house

Useful tips and advice

There is an excellent bus system in Brighton and Hove. We can provide you with a map of the bus routes. There is a lot of information about routes and timetables here:

www.buses.co.uk

One Stop Travel on North Street can provide you with information and sell bus and train tickets.

Accommodation – what you need to know

All the accommodation is within reasonable

and safe walking distance of a bus stop directly connected to the school, and is regularly inspected by our Accommodation Officers.

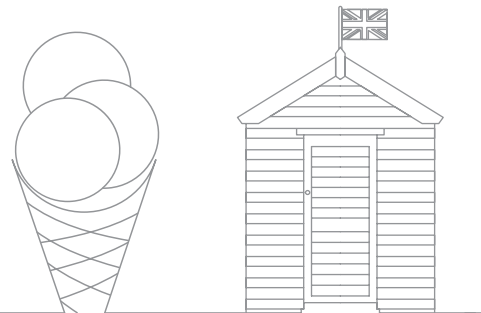
The student house and summer residence accommodation options are only available for students who are over 18 years old.

We want you to feel at home in the UK – and we have a good range of accommodation options for you to choose from to suit your needs and budget.

	HOMESTAY	STUDENT HOUSE	SUMMER RESIDENCE
AVAILABILITY	<ul style="list-style-type: none"> All year round 	<ul style="list-style-type: none"> All year round 	<ul style="list-style-type: none"> July & August only
LOCATION	<p>S & E</p> <p>Most homestays are a bus ride away</p>	<ul style="list-style-type: none"> All our student houses are conveniently located within walking distance – or a short bus ride – of the school. There is a large supermarket and plenty of convenience stores, restaurants and cafés in the nearby area. 	<ul style="list-style-type: none"> Phoenix Halls: located in the centre of Brighton just half a mile north of the famous Brighton pier. The residence is easily accessible by bus and on foot.
HOME TO SCHOOL: average public transport journey	<p>S 40 minutes</p> <p>E 40 minutes</p>	<ul style="list-style-type: none"> 15-25 minutes on foot, or a short bus ride 	<ul style="list-style-type: none"> 30 minutes
BOOKING OPTIONS	<p>S & E Single room</p> <p>S Shared room (only available to 2 students booking together)</p>	<ul style="list-style-type: none"> Single room 	<ul style="list-style-type: none"> Single en-suite room
MEAL PLANS	<ul style="list-style-type: none"> Full board Half board Breakfast only S Self-catering 	<ul style="list-style-type: none"> Self-catering: kitchens are modern and equipped with cookers, cutlery, cooking utensils, linen 	
BATHROOM	<p>S Shared</p> <p>E Private bathroom</p>	<p>Shared. Typically student houses have two bathrooms</p>	<ul style="list-style-type: none"> All rooms are en-suite
INTERNET ACCESS & OTHER FACILITIES	<ul style="list-style-type: none"> Internet access is available at most homestays. Please check with us at the time of booking. 	<ul style="list-style-type: none"> Free internet access 	<ul style="list-style-type: none"> Free internet access Access to common rooms
OTHER INFORMATION	<ul style="list-style-type: none"> Bed linen and towels provided 	<ul style="list-style-type: none"> A £150 deposit is required to cover possible loss or damage to the contents and/or property. Only available to students over 18 years old. Bed linen is provided (but please bring your own towels) 	<ul style="list-style-type: none"> Only available to students over 18 years old Bed linen is provided (but please bring your own towels)

S Standard **E** Executive

Bournemouth – sunshine coast



Bournemouth, on the UK's sunshine coast, invites you to study in Britain's happiest town!

KEY FACTS

Number of students

- Peak season: 300
- Low season: 120

Age of students

- Average: 23

Location

- Our school is just a 5 minute walk from beautiful, sandy Bournemouth beach.

Extra options

- Job Club (see page 27)
- Unpaid internship (see page 27)
- Ready for Work – Hotel Programme (see page 27)

Good to know

- Student house within walking distance of the school
- In-house café and Juice Bar
- Free wireless connection

School building right on the main square



Study in Bournemouth, the UK's happiest town

Our school is conveniently situated in the very centre of Bournemouth, so our students have all the shops, pubs and clubs on their doorstep. There is no location more central to Bournemouth!

Bournemouth has a cosmopolitan population and is home to Bournemouth University, which is UK's number one new university according to the Guardian University Guide. Bournemouth is also regularly voted the UK's happiest town!

With 11km of award-winning sandy beaches, a warmer than average climate and a daily average of 7.7 hours of summer sun, why not come and enjoy Britain's seaside paradise?



Great learning experience

Our strength is in our first-class facilities and enthusiastic team who are dedicated to providing a great learning environment. Our modern glass-fronted classrooms, wooden flooring and open airy spaces give the school a warm and friendly feel.



Bright study & Internet areas

The study centre is fitted with 8 modern widescreen computers and offers free high-speed Internet connection. Laptop users can also enjoy free Wi-Fi connection throughout the building.



In-house Juice Bar

The school has its own juice bar which is the perfect place for lunch or meeting friends during break or after class. Prices are very competitive and our students say we have the best coffee in town!

School reception

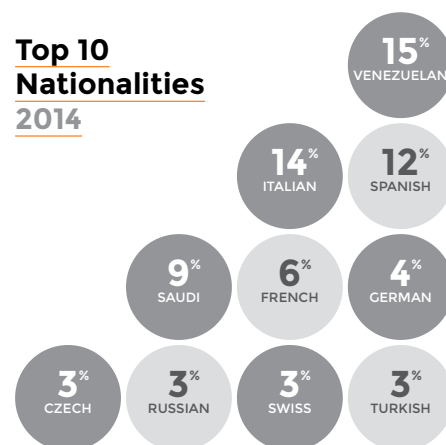


Spread over an entire floor of a landmark Art Deco building, our newly refurbished school features 14 spacious classrooms, a study centre, Juice Bar, Internet zone, free Wi-Fi connection and free student showers and lockers.

Students in class



Top 10 Nationalities 2014



Fancy a walk?

Bournemouth is easily accessible on foot. Here are walking times from the school for transport links and some top places of interest:

- Bournemouth railway station: 25 minutes
- Lower Gardens: 2 minutes
- The beach & pier: 5 minutes
- The Square: 1 minute

Well-connected

Bournemouth benefits from excellent transport links and can be reached by rail, road, sea and air. The fast train link to London means the capital can be reached within 2 hours.





Students choose our school not only for the quality of the lessons, but also to meet and share great experiences with like-minded people from all over the world.



- 1 Bournemouth Eye
- 2 Oceanarium
- 3 Matchams Karting
- 4 Tower Park
- 5 Adventure Wonderland
- 6 Moors Valley – Forest Segway
- 7 Brownsea Island
- 8 Farmer Palmer's
- 9 Monkey World
- 10 Laser Quest

Games on the golden beach

The school runs an exciting weekly social programme. A typical month may include an evening BBQ and games on the beach, cycling, a boat cruise around Poole Harbour and weekend trips to Winchester, Stonehenge, Oxford and London. A small charge (£3 – £15) is made for some activities, others are free of charge. Prices for full-day and weekend trips around the UK & Europe range from £30-£250.

Green and pleasant

The town is renowned for its award-winning gardens and parks. From the Tropical Gardens in Boscombe and Alum Chine to the Grade II listed Victorian Lower and Upper Gardens, Bournemouth has a wealth of green open spaces for students to enjoy.

Lively nights

Overlooking the beach and pier, the Bournemouth International Centre offers the latest concerts, shows, plays and ice-skating. Famous for its lively nightlife, the town has the highest number of bars and clubs per capita in the UK after London!



Jurassic coast tour





Accommodation – what you need to know

All the accommodation is inspected by our Accommodation Officers on a regular basis and is within reasonable and safe walking distance from a bus stop. The most cost effective way to travel within Bournemouth is to buy a monthly bus pass available from any newsagent for £51. The student house and summer residence accommodation options are only available for students who are over 18 years old.

Useful tips and advice

The National Express coach service operates between the London airports and Bournemouth. In addition, students can fly to Bournemouth International Airport (45 minutes) or Southampton Airport (20 minutes). Germany, Switzerland, France, Spain and Italy all operate direct flights into Bournemouth and Southampton.

Living in a homestay can be one of the most rewarding parts of the student's visit to England. You will have the chance to live in a home environment and experience the culture first hand.

	HOMESTAY	STUDENT HOUSE	SUMMER RESIDENCE
AVAILABILITY	<ul style="list-style-type: none"> All year round 	<ul style="list-style-type: none"> All year round 	<ul style="list-style-type: none"> July & August only
LOCATION	S & E Most homestays are a bus ride away	<ul style="list-style-type: none"> The house is located 5 minutes from Winton High Street and 5-10 minutes from the popular student area of Charminster. Both places are packed with restaurants, coffee shops and convenience stores. 	<ul style="list-style-type: none"> Dorchester House Residence is ideally located in the centre of Bournemouth just a 15 minute walk from the school and the beach.
HOME TO SCHOOL: average public transport journey	S 30 minutes E 30 minutes	<ul style="list-style-type: none"> 20-30 minutes on foot 	<ul style="list-style-type: none"> 15-20 minutes by public transport
BOOKING OPTIONS	S & E Single room S Shared room (only available to 2 students booking together)	<ul style="list-style-type: none"> Single room 	<ul style="list-style-type: none"> Single en-suite room
MEAL PLANS	<ul style="list-style-type: none"> Half board Breakfast only S Self-catering 	<ul style="list-style-type: none"> Self-catering: kitchens are modern and equipped with cookers, cutlery, cooking utensils, linen 	
BATHROOM	S Shared E Private bathroom	<ul style="list-style-type: none"> Shared. Typically student houses have two bathrooms 	<ul style="list-style-type: none"> All rooms are en-suite
INTERNET ACCESS & OTHER FACILITIES	<ul style="list-style-type: none"> Internet access is available at most homestays. Please check with us at the time of booking. 	<ul style="list-style-type: none"> Free internet access 	<ul style="list-style-type: none"> Free internet access
OTHER INFORMATION	<ul style="list-style-type: none"> Bed linen and towels provided 	<ul style="list-style-type: none"> A £150 deposit is required to cover possible loss or damage to the contents and/or property. Only available to students over 18 years old Bed linen is provided (but please bring your own towels) 	

General English, exam preparation & specialist courses

We offer a broad range of courses that have been carefully designed to cater for all needs and budgets.

ALL COURSES INCLUDE

- Coursebook
- Access to **myBSC** account (see p28)
- First-day placement test
- Use of study centre
- Free internet access
- Progress report (for students studying 8 weeks or more)
- Help and advice with further study
- Homework corrected by your teacher
- End-of-course report
- BSC end-of-course certificate showing your final level and attendance record (min. 85%)



Choice of courses – English at your fingertips

General English

We offer an exciting range of General English courses for all levels, from Elementary to Advanced, and for all budgets.

Course intensity varies from 15 to 30 lessons per week to give you the opportunity to choose a course that perfectly suits your learning needs and daily routine. Each of our group lessons lasts 50 minutes.

Exam preparation courses

Whether you are required to take an IELTS, TOEIC or TOEFL exam to enter a university or wish to study towards obtaining the FCE or CAE Cambridge certificate, we can provide the right exam preparation course for you.

General English + Business English

This practical course is designed to widen your knowledge of specific vocabulary in a work context and business situations. It comprises 15 or 20 lessons of General English and 5 or 10 lessons per week of specialised Business English.

General English + Cooking

Students who are passionate about cooking can now take advantage of this unique course and combine morning English classes with afternoon or evening cooking lessons at a local food and kitchen shop in Brighton or London.

General English + Windsurfing

This course is available at BSC Brighton April-September and combines morning English lessons with windsurfing in the afternoon.

General English + Football

This course is offered year-round at BSC London and combines morning English lessons with football coaching in the afternoon.

General English + Ready for Work

This 6-week programme combines 4 weeks of General English followed by 2 weeks unpaid work placement in the hospitality industry. A job interview for paid work is guaranteed on successful completion of the training.

One-to-One

Private courses are designed to suit your personal learning needs & daily routines.

Individual lessons are all 60 minutes long and the content can be negotiated between student and teacher. This gives you an opportunity to work on areas that are of particular interest or concern.

Work experience & career services

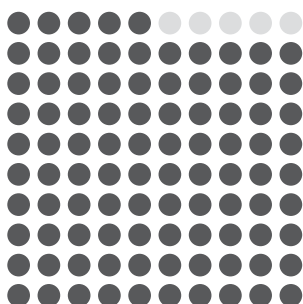
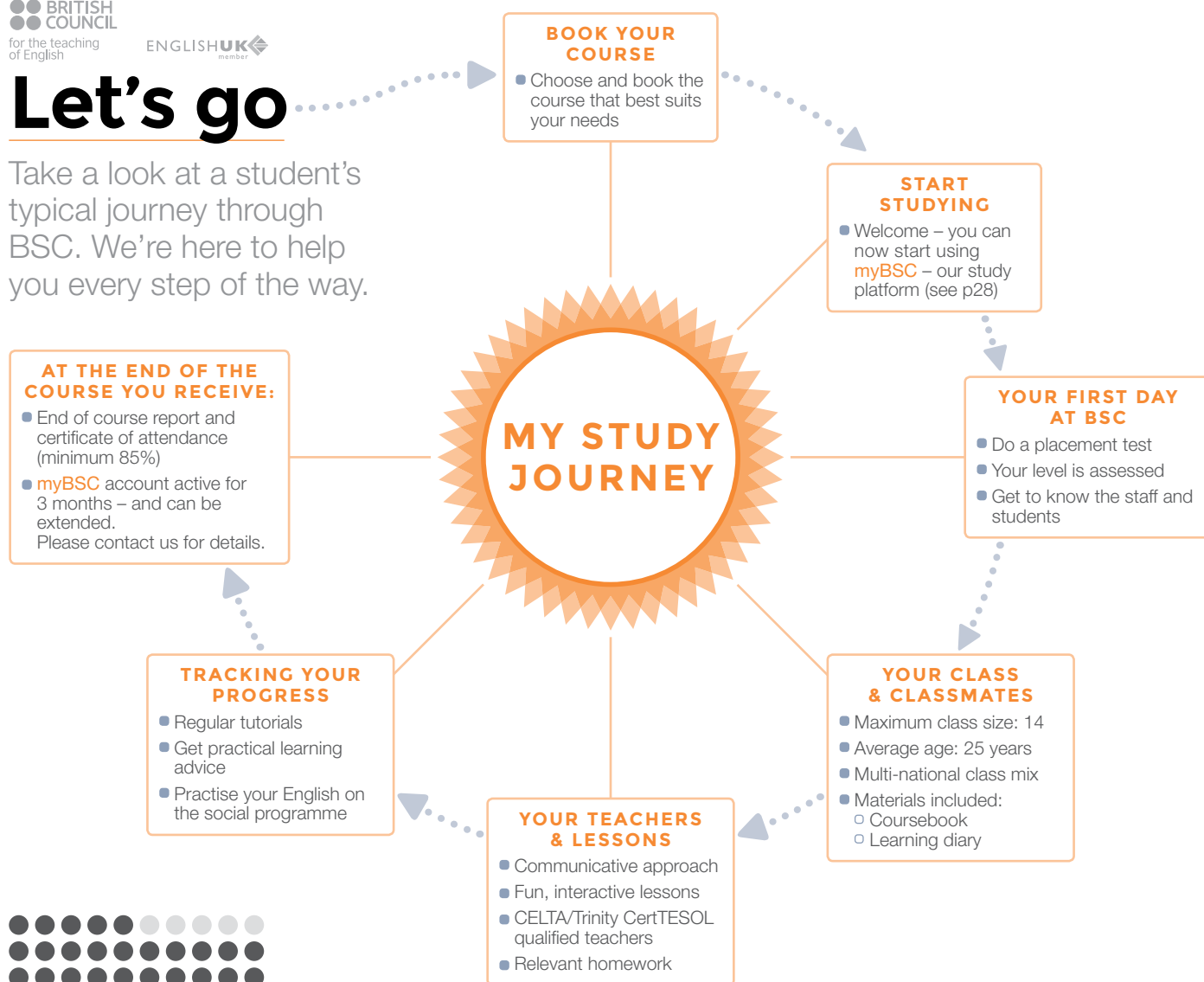
Specialist programmes and advice for those wishing to further develop their career: internships, business courses and free job seeking guidance.

Tailor-made courses for groups

The BSC Academic Team has a wealth of experience and expertise in designing and delivering courses specific to the needs of diverse groups.

Let's go

Take a look at a student's typical journey through BSC. We're here to help you every step of the way.



95%
 of students at BSC London
 had a rewarding experience

Sample taken: BSC London 2013

Centrally located premises, first-class learning facilities, talented teachers and multi-cultural environments – just some of the advantages of choosing our award-winning schools.

Small groups

Classes are small and multinational, with an average of 11 students and a maximum of 14. This enables our teachers to focus on your individual aims and interests to help you improve your English in a way which is relevant to you.

Nationality mix

We are really proud to have students from over 95 countries at our schools! This is a great opportunity to get to know people from different cultures and make your stay at British Study Centres a truly unforgettable experience!

Communicative approach

We use a communicative approach to teaching. Lessons are fun and interactive with a high level of student involvement focussing on the ability to communicate successfully in English. As

well as using stimulating and contemporary materials, we employ a variety of different methodologies and technologies.

We make the most of being in an English environment using class trips and external resources as much as possible to provide a personalised, authentic language learning experience. We believe that a warm and friendly environment is essential for effective learning and our commitment to high standards of achievement ensures that your time at the school is a rewarding experience.

Individual assessment

You will be individually assessed both on arrival and throughout the course. We give you a written and oral test on your first day and monitor your progress regularly. If you have

achieved satisfactory attendance (85%+), you receive a certificate and a report signed by Academic Management at the end of your stay.

These are very useful tools to show employers when looking for a new job.

High-quality teaching

We keep our teaching team up-to-date with the latest ideas in EFL methodology in a number of ways. We have regular staff meetings and training sessions to introduce new ideas and techniques as well as discussing the particular needs of any students who might be having problems. We believe that these regular meetings are essential in order for us to provide a high level of professionalism and care for students.

General English

We provide our students with a number of options in General English courses to suit all needs and budgets.

KEY FACTS

Start dates

- Every Monday

Course levels

- Elementary to Advanced (A2 to C1)

Average class size

- 11 (max 14)

Minimum course length

- 2 weeks

Minimum age

- 16 years

Group lesson duration

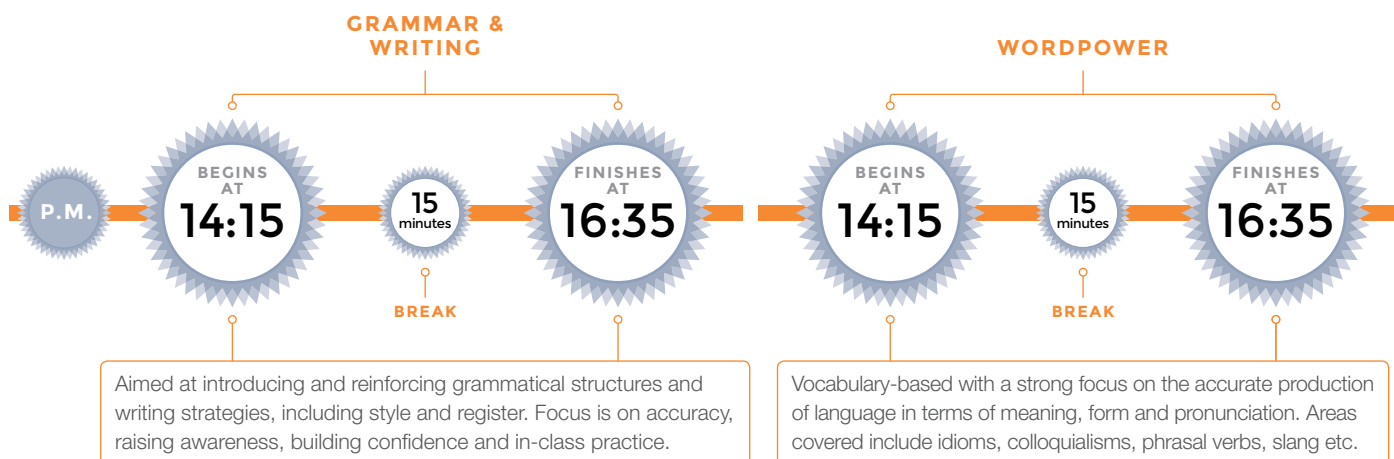
- 50 minutes



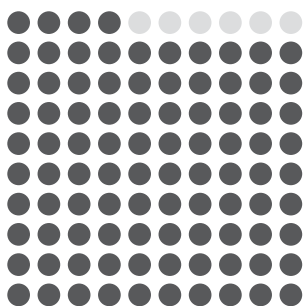
General English forms the core of our teaching programme. **Morning classes** are based around a coursebook lesson, followed by a Speaking & Listening class.



Afternoon and intensive courses offer you the chance to focus on specific language areas and may include the following options depending on your learning needs and preferences.

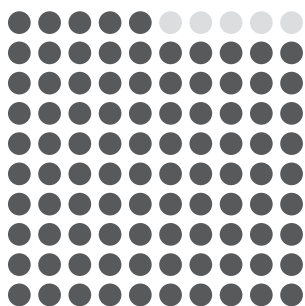


Lesson times may vary across schools



94%
of students
thought that
feedback
given by teachers
in class was
very useful

Sample taken: BSC Brighton 2013



95%
of students
thought that
lessons were
enjoyable
& interesting

Sample taken: BSC Bournemouth 2013

Morning General English

Ideal for students who want more spare time in the afternoon to join in the social activities programme and to discover life in the UK.

- **Course code:** G20am
- **Lessons per week:** 20 (16.6 hours)
- **Monday – Friday timetable:**
09:15 – 12:00 Coursebook
12:20 – 13:10 Speaking & Listening
- **Available:** all centres

Intensive General English

Choose 25 or 30 lessons per week if you aim to improve your confidence in the English language as quickly as possible.

- **Course code:** G25
- **Lessons per week:** 25 (20.8 hours)
- **Monday – Friday timetable:**
09:15 – 12:00 Coursebook
12:20 – 13:10 Speaking & Listening
14:15 – 16:35 2 afternoons per week:
Grammar & Writing
or Wordpower
- **Available:** all centres

- **Course code:** G30
- **Lessons per week:** 30 (25 hours)
- **Monday – Friday timetable:**
09:15 – 12:00 Coursebook
12:20 – 13:10 Speaking & Listening
14:15 – 16:35 4 afternoons per week:
Grammar & Writing
and Wordpower
- **Available:** all centres

Afternoon General English

15- or 20-lesson per week courses designed for students who are looking for a high-quality full-time afternoon course.

- **Course code:** G15pm
- **Lessons per week:** 15 (12.5 hours)
- **Monday – Friday timetable:**
12:20 – 13:10 Speaking & Listening
14:15 – 16:35 4 afternoons per week:
Grammar & Writing
and Wordpower
- **Available:** all centres
- **N.B:** Not available for GSV students

- **Course code:** G20pm
- **Lessons per week:** 20 (16.6 hours)
- **Monday – Thursday timetable:**
13:15 – 17:00 Specialist afternoon
grammar coursebook
17:10 – 18:00 Speaking & Listening
14:15 – 16:35 4 afternoons per week:
Grammar & Writing
and Wordpower
- **Available:** all centres
29 Jun – 28 Aug

	09:15	12:00	12:20	13:10	14:15	16:35	17:10	18:00
MORNING G20AM 20 lessons/week 16.6 hours	15 lessons Mon – Fri CB	Break	5 lessons Mon – Fri SL	Lunch				
INTENSIVE G25 25 lessons/week 20.8 hours	15 lessons Mon – Fri CB		5 lessons Mon – Fri SL		5 lessons/week Mon & Tue or Wed & Thu WP or GW			
INTENSIVE G30 30 lessons/week 25 hours	15 lessons Mon – Fri CB		5 lessons Mon – Fri SL		10 lessons/week Mon-Thu choice of two WP GW			
AFTERNOON G15PM 15 lessons/week 12.5 hours			5 lessons Mon – Fri SL		10 lessons/week Mon – Thu WP & GW			
AFTERNOON G20PM 20 lessons/week 16.6 hours				15 lessons Mon – Thu (13.15 – 17.00) CB			5 lessons Mon – Thu (17.10 – 18.00) SL	

Sample timetable

CB Coursebook **SL** Speaking & Listening **WP** Wordpower **GW** Grammar & Writing

Exam preparation

Whether you need IELTS, TOEIC or TOEFL for university study, or FCE or CAE Cambridge qualifications – we can help.



COURSE SUMMARY

Course code	IE20, IE25, IE30
Available in	All centres
Start dates	Any Monday
Minimum level	Upper-Intermediate (B2)
Class size	Average 11, maximum 14
Lessons/week	20, 25, 30
Lesson duration	50 minutes
Exam fee	Approx. £160 (not included)

IELTS preparation

IELTS (International English Language Testing System) is an increasingly popular exam taken by students who plan to study at university in the UK, either for a first degree or a Master's. We offer a bespoke course which helps you prepare for the exam.

Course description

15 lessons of specialist IELTS preparation plus 5, 10 or 15 lessons per week of the following afternoon options: Speaking & Listening, Grammar & Writing, Wordpower and/or Business English.

Contents & timetable

09:15 – 12:00, Mon – Fri: During the first three lessons of the day the work done in class is based around a specialist IELTS coursebook and supplementary material is also used, particularly from authentic sources such as newspapers. The syllabus includes a range of topics which are relevant to the test. On this course you will study the four skills - reading, writing, speaking and listening – as they relate to the academic IELTS test, as well as specific task types necessary to do well in the test.

Afternoon lessons: Options can be added to the IELTS course, too: many students take extra Speaking & Listening, Grammar & Writing, Wordpower and/or Business English lessons.

COURSE SUMMARY

Course code	FCE, CAE
Minimum level	FCE: Upper-Intermediate (B2) CAE: Pre-Advanced (C1)
Available in	All centres
Class size	Average 11, maximum 14
Lessons/week	20, 25
Lesson duration	50 minutes
Exam fee	Approx. £140 (not included)

Preparation courses for
University of Cambridge ESOL Examinations

Please note...

Some parts of the exam may be taken before the end of the course.

Cambridge exam preparation courses

Cambridge preparation courses give you the opportunity to study for an internationally-recognised qualification. Preparation courses are offered at First Certificate and Advanced level. For information on the exact start dates and duration, please see our fee sheet. The exam covers writing, reading, grammar, listening and speaking. The course prepares you for all these different parts of the exam. In addition you will do a lot of work on areas of general English, so you certainly will not spend all your time doing practice exams.

Contents & timetable

09:15 – 12:00, Mon – Fri: Specialist coursebook class focusing on exam practice techniques.

12:20 – 13:10, Mon – Fri: Speaking & Listening – an extra opportunity for fluency practice.

This course includes 20 or 25 lessons/week depending on the school. The intensive programme includes an extra 5 lessons which are taken on 2 afternoons per week from 14:15 to 16:35.

Bournemouth At this school, we offer a General English plus One-to-One FCE or CAE exam preparation course that starts every Monday. It includes a combination of 20 General English lessons and 2 private lessons/week in which you can focus on perfecting examination skills. In addition, the intensive FCE course starts on 27 July (4 weeks).

COURSE SUMMARY

Course code	TOEFL22/TOEIC22
Start dates	Any Monday, Sep-Jun, London & Oxford Any Monday, year-round Brighton & Bournemouth
Minimum level	Intermediate (B1)
Class size	Average 11, maximum 14
Lessons/week	20 group + 2 one-to-one
Lesson duration	Group: 50 minutes One-to-one: 60 minutes
Exam fee (not included)	TOEFL approx. £125 TOEIC approx. £90

General English Plus One-to-One TOEFL or TOEIC Preparation

Our TOEIC & TOEFL courses have weekly start dates and are designed to focus on perfecting examination skills.

Course description

Our General English plus TOEIC or TOEFL courses also have weekly start dates and include a combination of 20 General English lessons and 2 private lessons per week in which you can focus on perfecting examination skills.

Contents & timetable

09:15 – 12:00, Mon – Fri: In the morning this course follows the same pattern as the Morning General English course and we work with a coursebook concentrating on the four main skills – speaking, listening, reading and writing.

Afternoon lessons: The 5 afternoon group lessons are one of the three following options: Speaking & Listening, Grammar & Writing or Business English.

One-to-one lessons: The 2 one-to-one lessons usually take place in the afternoon. Individual lessons all last 60 minutes.

COURSE SUMMARY

Course code	TOEFL25/TOEIC25
Available in	London & Oxford
Start dates	Any Monday, Jul & Aug
Minimum level	Intermediate (B1)
Class size	Group: Average 11, max.14 Mini-group: max 6
Lessons/week	20 group + 5 mini-group
Lesson duration	Group: 50 minutes
Exam fee (not included)	TOEFL approx. £125 TOEIC approx. £90

General English Plus TOEFL or TOEIC Summer Preparation in Mini-groups

Course description

In summer the course comprises 20 lessons of General English plus 5 lessons of TOEIC or TOEFL Preparation in mini-groups (max. 6 students).

Contents & timetable

09:15 – 12:00, Mon – Fri: In the morning this course follows the same pattern as the General English plus One-to-One TOEFL or TOEIC Preparation (see above).

Afternoon lessons: The 5 afternoon group lessons comprise one of the three following options: Speaking & Listening, Grammar & Writing or Business English.

Mini-group lessons: The 5 mini-group lessons take place on two afternoons and are designed to focus on exam practice techniques.

The Common European Framework of Reference

This internationally recognised framework describes language ability on a scale of levels which ranges from A1 for beginners to C2 for those who have mastered a language. The table below demonstrates the correlation between CEFR, levels taught at British Study Centres and benchmark scores obtained in Cambridge, IELTS, TOEFL and TOEIC exams.

Please note: All level comparisons between exams are approximate. Students wishing to study on an exam course need to take a pre-test – please contact individual schools for details.

CEFR	BSC LEVELS	CAMBRIDGE	IELTS	TOEFL ● paper ● computer ● IBT	TOEIC
MASTERY C2		Certificate of Proficiency in English (CPE)	9.0 8.0	677/300/120 600/250/100	900 800
EFFECTIVE OPERATIONAL PROFICIENCY C1	Advanced	Certificate in Advanced English (CAE)	7.0	550/213/80	700
VANTAGE B2	Upper-Intermediate	First Certificate in English (FCE)	6.0 5.0	500/173/61 450/133/45	600 450
THRESHOLD B1	Intermediate	Preliminary English Test (PET)	4.0		
WAYSTAGE A2/B1	Pre-Intermediate	Key English Test (KET)			
BREAKTHROUGH A2	Elementary	Elementary			

Courses for A1 Beginners are not available at BSC

Specialist courses

Designed for students wishing to enrol on a more specialist programme or to include activities in the afternoon.

COURSE SUMMARY

Course code	B20*, B25, B30
Available in	London, Oxford & Brighton
Start dates	Any Monday
Minimum level	Intermediate (B1)
Class size	Average 11, maximum 14
Lessons/week	20*, 25, 30
Lesson duration	50 minutes
Exam fee	£45 (not included)

*Excluding London



General English Plus Business English

This practical course is designed to widen your knowledge of specific vocabulary in a work context and business situations. Our schools are official agents and test centres for students who wish to take the BULATS (Business Language Testing Service) exam. The BULATS exam is an online test involving reading, use of English and listening, and is a very useful certificate for students who wish to extend their visa and need to show proof of having taken an exam.

Course contents

This course comprises of 15, 20, or 25 lessons of General English and 10 (London) or 5 (Oxford & Brighton) lessons per week of specialised Business English in the afternoon.

Contents & timetable

09:15 – 12:00, Mon – Fri: In the morning this course follows the same pattern as the Morning General English course and we work with a coursebook concentrating on the four main skills – speaking, listening, reading and writing.

12:20 – 13:10, Mon – Fri: Students who wish to join a more intensive programme can attend the Speaking & Listening lessons for an extra opportunity for fluency practice.

14:15 – 16:35, Mon – Thu, four (London) or two (Oxford & Brighton) afternoons/week: Specialised Business English where we cover all the skills, but focus more on speaking and listening. Emphasis is placed on communication tasks which give you the opportunity to practise fluency and build confidence in business situations.

Advice and assistance is available for students wishing to take the BULATS examination. Please see the Academic Director for more details.



General English Plus Cooking

Students who are passionate about cooking can now take advantage of this unique course and combine morning English classes with afternoon or evening cooking lessons at a local food and kitchen shop in Brighton or London.

This course aims to help the novice cook become more confident at preparing a meal and also to inspire the competent cook when creating a dish. The emphasis is to empower cooks of every level and provide an extra opportunity to practise English.

Course contents & timetable

09:15 – 12:00, Mon – Fri: We work with a coursebook during the first three lessons of the day enabling you to improve the four main skills – speaking, listening, reading and writing. As well as these four main skills we will also work on other key areas to help develop your fluency and accuracy – pronunciation, grammar, vocabulary, idioms.

12:20 – 13:10, Mon – Fri: The final lesson of the course is devoted to Speaking & Listening, which is an extra opportunity for fluency practice.

3 afternoon or evening cooking sessions per week (2 hours each): Cookery lessons will take place at a local food and kitchen shop where anyone can learn to cook and make great food. This course aims to help the novice cook become more confident at preparing a meal and also to inspire the competent cook when creating a dish. The emphasis is to empower cooks of every level. Some lessons require that two participants share the same workstation. This provides an extra opportunity for you to practice your English without compromising your cooking time or outcome of the lesson.

Cookery class themes include: Chop, Dice & Slice, Bouillabaisse, Thai Curry, Perfect Steak, Pasta Master, American-Style Chilli and many others.

The course price includes in each lesson: teaching, demonstration, cooking and eating, use of an apron, tools and a glass of wine (under 18s non-alcoholic drink).

DID YOU KNOW?

Baking and chocolate-making sessions are included as part of some schools' social programmes. We even have regular and delicious international food sharing parties.

COURSE SUMMARY

Course code	G26C
Available in	London & Brighton
Start dates	Any Monday
Duration	2 weeks
Minimum level	Intermediate (B1)
Class size	English: avg. 11, max. 14 Cooking: max. 16
Lessons/week	26
Lesson duration	English: 50 mins Cooking: 60 mins

COURSE SUMMARY

Course code	G30W
Available in	Brighton
Start dates	Any Monday Apr-Sep
Duration	2 weeks
Minimum level	Intermediate (B1)
Class size	English: avg. 11, max 14 Watersports: one-to-one
Lessons/week	30
Lesson duration	English: 50 mins Windsurfing: 60 mins

General English Plus Windsurfing

Combine morning English lessons with windsurfing in the afternoon.

Contents & timetable

09:15 – 13:10, Mon – Fri: In the morning this course follows the same pattern as the General English G20. It includes 15 coursebook lessons followed by 5 speaking & listening lessons/week.

15:00 – 17:00, Mon – Fri: Windsurfing lessons.



COURSE SUMMARY

Course code	G26F
Available in	London
Start dates	Any Monday
Duration	2-12 weeks
Minimum level	Pre-Intermediate (B1)
Class size	English: avg. 11, max. 14 Football: max. 15
Lessons/week	26
Lesson duration	English: 50 mins Football: 60 mins

General English Plus Football

General English plus football coaching three afternoons/week at West Ham United's training ground – 'The Academy'. Each weekend all students on the course will play a competitive game. Sessions are conducted by UEFA qualified coaches. All students receive a Nike shirt, shorts and tracksuit. Football boots, shin pads and socks are not provided. All students receive a certificate at the end of their course.

Courses can start any week of the year (except Christmas and New Year weeks) and can be combined with any morning General English programme.

Contents & timetable

09:15 – 13:10, Mon – Fri: In the morning this course follows the same pattern as the General English G20. It includes 15 coursebook lessons followed by 5 speaking & listening lessons/week.

14:30 – 16:30, Tue – Thu: Football training.

COURSE SUMMARY

Course code	G25HP
Available in	Bournemouth
Start dates	16 Feb, 18 May, 13 Jul & 9 Nov
Duration	6 weeks
Minimum level	Intermediate (B1)
Class size	English: avg. 11, max. 14
Lessons/week	25
Lesson duration	English: 50 mins

General English Plus Ready for Work – Hotel Programme

Designed for students who wish to take an English course as well as gaining some experience working in the hospitality industry. During the first 4 weeks it includes 20 lessons of General English plus 5 lessons of specific vocational training per week. It is followed by 2 weeks unpaid work placement in the hospitality industry. In addition, a job interview for paid work is guaranteed on successful completion of the training. Please note that the course is only available to EEA and Swiss nationals or Youth Mobility Scheme Visa holders (Tier 5).

A BSC certificate is awarded at the end of the 6-week course. Candidates who successfully complete the work placement are typically offered a 3-6 month contract. Candidates wishing to complete the 6-week programme but don't intend to go for the job interview should let us know at the time of booking.

Contents & timetable

09:15 – 13:10, Mon – Fri: In the morning this course follows the same pattern as the General English G20. It includes 15 coursebook lessons followed by 5 speaking & listening lessons/wk.

14:15 – 16:35, 2 afternoons/wk: Specific vocational training.

Work experience & career services

We offer specialist programmes and advice for those wishing to further develop their career: internships and free job seeking guidance.

Internships

For students wishing to gain work experience in a UK-based company and to improve their CV, we are able to offer unpaid internships in all centres. Placements can be arranged in the following sectors: marketing, hospitality, hotel & catering, media, events and administration.

Students must take a minimum 6-week course prior to placement. Minimum entry level is Intermediate.

Teacher Training

Our specialist Teacher Training centres in Oxford and Brighton offer a range of courses suitable for both UK and overseas teachers, whether just setting out on their teaching careers or wishing to extend their skills with on-going professional development.

We offer the 4-week CELTA, the 9-month DELTA and 2-week 'refresher' courses for non-native teachers. Please see our separate Teacher Training brochure for more information.

Job Club

For students wishing to find part-time work during their studies, we hold a Job Club every other week in all our schools. We provide details of available jobs in local cafés, bars, shops and hotels.

All students receive a job pack with information on UK law, visas and the minimum wage. We also have a 'CV Clinic' where we give students free help and advice.

myBSC – study platform & portal to the BSC world

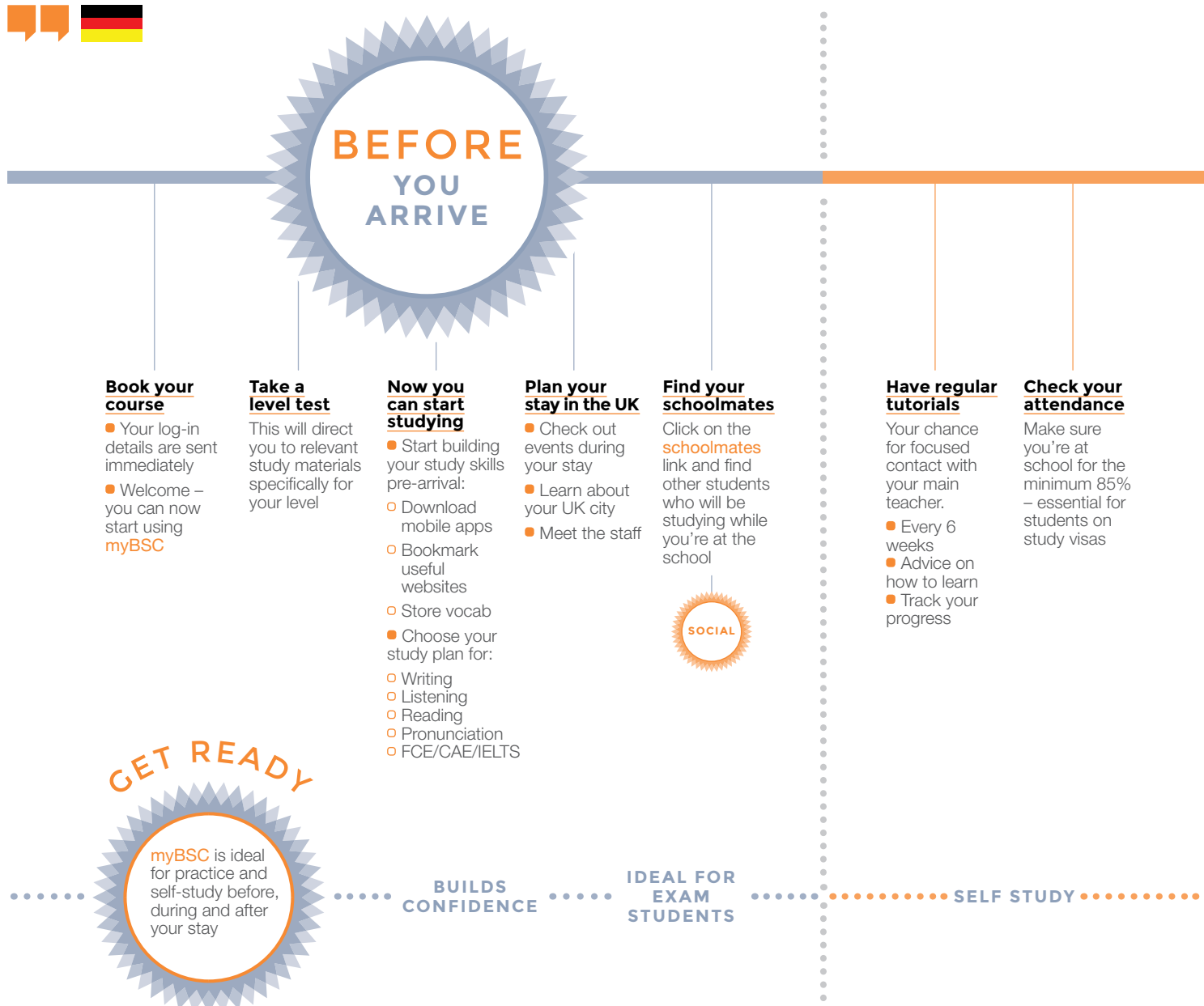
Shape & improve your learning experience from the moment you book with us until long after you leave.



Nicolas, Germany

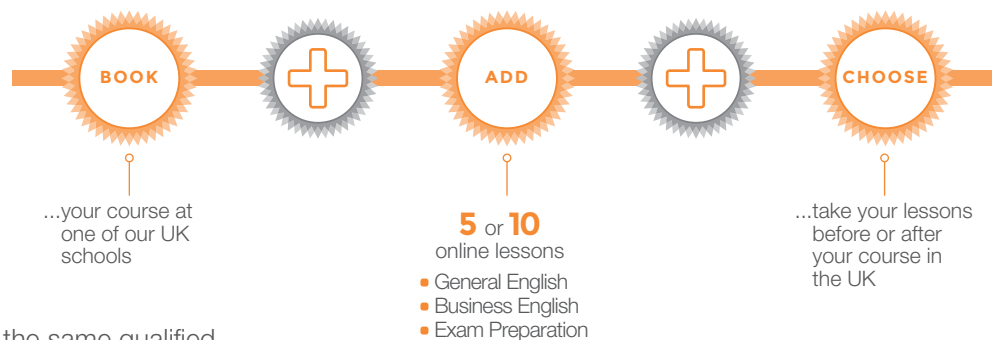
myBSC is wonderful. I will use it regularly the next 3 months to continue learning and improving my English.

It is easy to use, clearly designed and offers a lot of opportunities to learn English. Well done!



DID YOU KNOW?

You can take extra **live online lessons** with a UK-based teacher before or after your course. Simple. Smart. Effective.



- Lessons are delivered by the same qualified teachers as in our UK-based schools using the latest online video conferencing technology
- Pre-arrival lessons can help you gain confidence before you travel to the UK
- Post-departure live lessons are a great way to keep your English active

FIND OUT MORE

To see a preview of example lessons and practice exercises, visit:

www.british-study-com/online-courses

The British Council is currently not able to offer accreditation for any online courses

DURING YOUR STAY

Social programme

Easy to check at a glance which social events are coming up during the next month – don't miss a thing

SOCIAL

Study plan

Ideal for students who want extra study

- Perfect for homework exercises
- Extra class study materials

Final report

All students leave BSC with a certificate and a report.

Your report is linked to your **myBSC** account.

AFTER YOU LEAVE

You're still online

Your **myBSC** account is active for 3 months after you leave

Review your progress

Use your tutorials and reports to plan your future studies

Real English

Improve your grammar and vocabulary with weekly topical news lessons

Extended access

Want to extend access to your **myBSC** account even further? No problem. Contact us for details.

HOMEWORK

KEEPS YOUR ENGLISH ACTIVE

FAQs

Need to ask us something? No problem.
Here are most of the answers.

When can I start the course?

The majority of our courses start every Monday throughout the year.

How long can I study for?

The minimum is 2 weeks but you can study for as long as you want - up to 1 year if you wish!

What is the minimum age?

16 years old.

Is the school accredited by the British Council?

Yes, British Study Centres (BSC) is accredited by the British Council for the teaching of English as a foreign language. It is also an active member of English UK, the national association of accredited English language centres. In addition, BSC is also accredited by the Independent Schools Inspectorate.

How do I book my course?

You can easily book and pay for your course online. Alternatively, you can contact us on info@british-study.com for a list of authorised British Study Centres representatives in your country. We strongly advise you to do this as you will receive knowledgeable course advice in your own language and also information on applying for a visa (visa national students). Some agents will also book your flight tickets for you.

Do I need to pay a deposit?

Yes. We ask for a deposit of £250 to secure the course and accommodation if you require it.

Do I need a visa to study at your school?

Students from European Economic Area (EEA) and Switzerland do not need a visa to study in UK. The situation for students from other countries varies. Please check with a British Consulate or Embassy in your country of residence.

Can British Study Centres issue Confirmation of Acceptance for Studies (CAS) numbers?

British Study Centres is recognised as Tier 4 Highly Trusted Sponsor (HTS) by the UK Border Agency. This is relevant for students applying for a General Student Visa.

How many students are there in each class?

We have a maximum of 14 students per class and an average of 11.



Where do the other students come from?

From all over the world! We have students from Europe, South America, Asia and Africa. Depending on the time of year, we have up to 35 different nationalities in our schools at any one time!

Tell me about your teachers

We select our teachers very carefully. Most of our teachers have a degree and all of them have an English language teaching qualification. They must also have the kind of personality which enjoys meeting people from all over the world and a desire to make their lessons stimulating and enjoyable.

Are all course materials included?

Textbooks and other course materials are included in the course fees. In fact, every student gets a textbook as well as access to **myBSC**, our eLearning platform and portal to the BSC world! This system has been carefully designed to support all areas of your experience with British Study Centres.



End of course certificate

At the end of the course you will receive a certificate from the school where we will state the duration of the course and level achieved. The certificate is given to all students provided their attendance is at least 85%.

What about internet access?

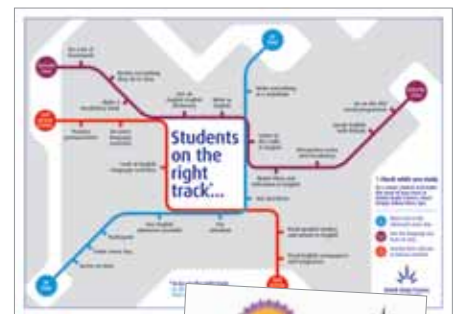
Standard and Wi-Fi internet access is free of charge at all of our schools. Our student houses and residences are all fitted with Wi-Fi internet access which is free, too. Many homestays also offer free internet access.

What should I do if I am not happy with some aspect of my stay?

If you have a problem with your course, accommodation or any other aspect of your stay, please talk to us as soon as possible.

You will find detailed information about the complaints procedure and who to contact in the downloads section of our website:

www.british-study.com/adults/policies.php



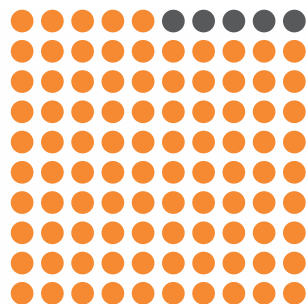
A selection of classroom and general materials designed exclusively for BSC

Can't find the answer you need?

We know you have lots of questions and we hope we've answered everything you need to ask. However, if the answer to your question isn't here, please email us at:

e: info@british-study.com

95%
of our students
would
recommend
British Study Centres
to a friend



There are many reasons why students choose to come to BSC Oxford.

Some love it because of its central location and proximity to all the city's main attractions.

Others adore the atmosphere of this classic university city, and the vibe you get from just being here.

Watch the video and hear what Bianca and other students have to say about Oxford and our school.



INTERACTIVE
PRINT



Download the free
Layar App



Scan this page



Discover
interactive content



British Study Centres
School of English

**ADULTS
JUNIORS
TEACHER TRAINING
ONLINE**

Thinking in English

www.british-study.com

British Study Centres Head Office

2nd Floor, 37 Duke Street,
London W1U 1LN

t: +44 (0)207 487 9030

f: +44 (0)207 487 9051

e: info@british-study.com

British Study Centres London

Hannah House, 13-16 Manchester Street,
London W1U 4DJ

t: +44 (0)20 7317 0160

f: +44 (0)20 7317 0161

e: london@british-study.com

British Study Centres Oxford

Oxford House, Magdalen Street,
Oxford OX1 3AE

t: +44 (0)1865 246620

f: +44 (0)1865 246857

e: oxford@british-study.com

British Study Centres Brighton

Fairfax House, 47 Cromwell Road,
Brighton & Hove,
East Sussex BN3 3ER

t: +44 (0)1273 229740

f: +44 (0)1273 208401

e: brighton@british-study.com

British Study Centres Bournemouth

Bristol & West House,
1st Floor, Post Office Road,
Bournemouth BH1 1BL

t: +44 (0)1202 587100

f: +44 (0)1202 314979

e: bournemouth@british-study.com