

NEW CENTRAL
LONDON LOCATION



BRIGHTON · CAMBRIDGE · CENTRAL LONDON · HASTINGS · LONDON GREENWICH · OXFORD · BOSTON · FORT LAUDERDALE · LOS ANGELES · NEW YORK · SAN DIEGO · SAN FRANCISCO · TORONTO · BRISBANE · MELBOURNE · SURFERS PARADISE · SYDNEY · AUCKLAND



Learn and Live English 2015

embassyenglish.com



I know firsthand the opportunities that come from learning English as a second language.

As a teenager in Brazil, I dreamed of making a difference in the world. I realised that learning English would

be an essential step on my path to fulfilling those dreams.

I found I could make a difference through a career in education. Every one of the 30,000 students who come through our doors at Embassy English each year finds his or her own path too.

Our students from all corners of the world tell us how improving their English language skills changed their lives. Some are getting ready for university in English-speaking countries. Others want to start a business or get a new job. Others still look forward to making the most of travelling around the world.

In partnership with our agents, we are bringing English to life, giving each student the chance to fulfill his or her dreams.

Best,

Santuza Bicalho

Senior VP, Global Sales Manager, Embassy English



Currumbin Wildlife Sanctuary, Gold Coast...

Seaside fun in Hastings, UK...



Friendly, approachable teachers...



Discuss project work with friends...



Extra study in the library...



Play football in Brisbane...



Shopping in New York



Take a stroll on Brighton Pier ...




Take time out with friends...

Contents

Choose Embassy English	10	Embassy English Study Centres:	
Embassy English Study Centres	12	UK	34
Home Away From Home	14	Central London	36
Have Fun While Practising		Brighton	38
Your English Skills	16	Cambridge	40
Success: However You Define It	18	Hastings	42
		London Greenwich	44
		Oxford	46
Courses		USA	48
General English		Boston	50
Intensive Programme	20	Fort Lauderdale	52
Choose Your Electives	21	Los Angeles	54
Standard Programme	22	New York	56
Vacation and Travel English	23	San Diego	58
Long-Term English		San Francisco	60
Language Semester Abroad	24	Canada	62
Communication Skills	25	Toronto	64
English in Action		Australia	66
Real-World English	26	Brisbane	68
Embassy Pathways		Melbourne	70
English for Academic Purposes	27	Surfers Paradise	72
Exam Preparation	28	Sydney	74
Embassy English courses	30	New Zealand	76
		Auckland	78
		Do More With Embassy	82
		Practical Information	84



Working hard
in class...



Boat trip in Sydney...



Classes are
good fun!

Embassy English: Bringing English to Life

Embassy English paves the way for you to achieve success, whether you want to improve your English language skills to go on to university, to get a better job, or to travel around the world with confidence.

Our courses offer you the opportunity to live, learn and play in some of the world's most desirable travel destinations. By immersing yourself among native speakers, you will improve your English and have experiences you'll never forget.

Our students tell us that Embassy English study centres are the most inviting, and that our staff and teachers make them feel welcome and ready to learn.

Our authorised agents are experts at helping you select the best study centre and language programme for you. We hope to see you taking a big step toward achieving your goals at an Embassy English centre soon.



discover who you



are



make new friends







visit. exciting places





explore new ideas

Choose
Embassy
English



Learn from our experience



Highly trained teachers



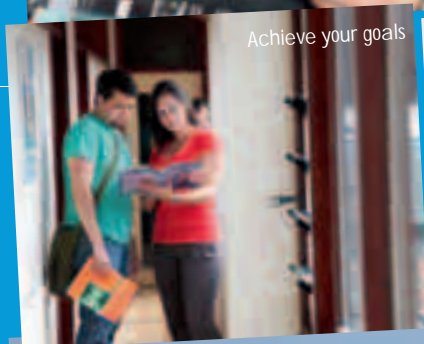
Explore world-famous cities



Practise your English



Learn using the latest technology



Achieve your goals



Comfortable residences



Make friends from around the world

Learn, live and play with Embassy English to achieve your definition of success: a new job, university, or international travel.

Benefit from our experience

Embassy English has 40 years of success teaching English to international students. Each year, over 30,000 students from more than 100 countries improve their English skills - and their opportunities - with us, so you can trust that our approach will work for you.

- Speak only English in class
- Follow a structured curriculum
- Use real-life materials (websites, TV and newspapers)

Live in the world's most exciting cities

Whether you choose a residence or homestay, you'll have an authentic experience that meets your needs and budget in a world-class city.

Play in your spare time

You'll have plenty of free time for fun while trying out your new English skills. Centre-arranged activities and time on your own to explore will give you memories that last a lifetime.

Study with English language experts

Learn from our knowledgeable and dedicated teachers who know how to help you succeed.

Bring English to life

Build your confidence and ability by practising your English with native speakers in conversations and other practical situations.

Learn with the latest technology

Our classrooms are equipped with interactive whiteboards and Wi-Fi. **My Embassy English**, our exclusive online learning platform, integrates all of your learning - even before you arrive. Your **e-Portfolio** lets you monitor your progress, collaborate on projects and share your work with friends, family and others.

Gain entry to university

Improve your English with IELTS, TOEFL, and Cambridge preparation courses. Or let Embassy Pathways lead you to university success without having to take an exam.

Make friends from around the world

Learn and live with global classmates who might turn out to become lifelong friends.

Embassy English Study Centres

Embassy English is known for providing bright, modern, high-tech centres in the best locations in each city. Every one of our centres meets the highest standards to make sure you're comfortable, focused and learning to the full extent of your ability.

Learn with the latest technology

Our teachers have ongoing training in the latest technology and teaching methods to help you learn at your best. Interactive whiteboards display video, audio and online materials to make learning English more engaging and fun.

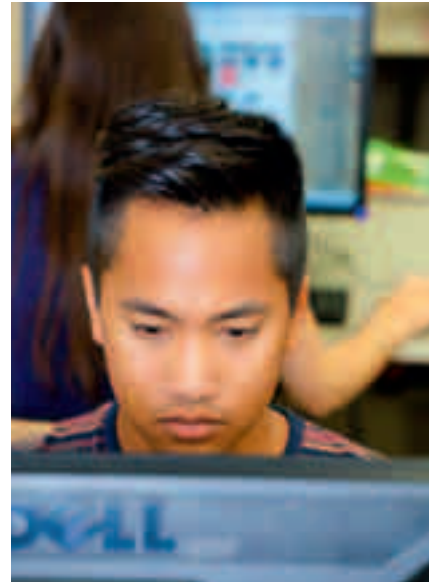
My Embassy English, Embassy English's own online learning platform, monitors your progress from your first day and integrates your classwork with at-home assignments and progress tests. Your **e-Portfolio** lets you save your work so you can monitor your progress, collaborate on projects with your classmates, and share your work with family, friends and others.

Mobile learning integrates your smartphone, tablet, notebook or laptop into our Wi-Fi enabled classrooms. Embassy's digital course materials use a structured curriculum to put you on the path to success.

What you can expect at our centres:

- Stylish, comfortable classrooms
- My Embassy English online learning platform
- e-Portfolio to save and share your work
- Cafeterias and student lounges
- Free wireless internet

Mobile learning integrates your smartphone, tablet, notebook or laptop into our Wi-Fi enabled classrooms.





Home Away From Home



Whether you choose to live in a residence or a homestay, your Embassy English accommodation will make your learning experience even more enriching with a variety of comfortable options.

Residence

When you choose to live in a residence, you'll live independently with the support of a caring staff. Embassy English residences are bright and modern, with options including shared or single rooms, a variety of meal plan choices, and en suite or shared bathroom options.

Homestay

Homestay offers you the opportunity to live with a friendly and welcoming family in their home. You'll be immersed in the English language as you meet local people and learn about their culture. Your host family will also provide your meals if requested.

Putting student welfare first

We offer a high standard of care and supervision to all our students. Each Embassy English study centre has a dedicated welfare officer to ensure each student is happy and well cared for. We can provide first aid on site, and have links with local doctors, dentists and hospitals.

Minimum ages

Many residences take students aged 16+. Visit each centre's website for more information at embassyenglish.com

- Bright modern residences
- Fantastic city centre and on-campus summer locations
- Easy travel distance from the study centres
- Shared and single rooms
- Self-catering facilities, cafeteria and meal plan options
- En suite or shared facilities



When I arrived in Sydney, I stayed in a homestay. My host mother was very kind and her cooking delicious - I had a great time. Now I'm staying in a shared house. My room-mates are nice people.
Yumi, Japan



Cambridge



Brighton



Fort Lauderdale



Brisbane



Toronto



Greenwich



Melbourne



Los Angeles

Have Fun While Practising Your English Skills



Auckland



London



San Francisco



Surfers Paradise



New York



Hastings



Sydney

Take full advantage of learning with Embassy English to explore some of the most popular travel destinations in the world. As an Embassy English student, you can bring English to life by taking part in the activities that make each city stimulating and dynamic. You can practise your new English skills with native speakers as you explore that city's greatest attractions.

Success: However You Define It

Improve your language skills the Embassy English way. Get ahead no matter what your goals are.

Get a better job

'Learning English will benefit me in my career. In my country, companies value people who speak several languages.'

Jose, Angola



Go to university

'The best thing is the elective course to prepare for the TOEFL exam. It will help me a lot for the future.'

Martina, Italy



Travel with confidence

'I've travelled weekends while studying here; I've been to Amsterdam, Paris, Brighton and London.'

Patricia, Mexico



Embassy English guides you to English proficiency, one level at a time

CEFR Level	Description	Exams and scores			
		IELTS	TOEFL iBT	TOEIC	Cambridge
C2 Proficient	You can use English with ease and fluency. Improve by increasing your understanding of the nuances of the language and engaging in independent reading to develop your vocabulary further.	7-8	94-109	901+	CPE
C1 Advanced	You can use English in a range of culturally appropriate ways. Improve by extending your vocabulary and refining your use of style and register.	6-7	60-93	751-900	Cambridge CAE
B2 Upper Intermediate	You can use English effectively. Improve by learning to discuss, argue and express opinion in a culturally acceptable way. Refine your use of grammar and vocabulary.	5-6	35-59	526-750	Cambridge FCE
B1 Intermediate	You can use English effectively. Improve by learning to discuss, argue and express opinion in a culturally acceptable way. Refine your use of grammar and vocabulary.	4-5	31-34	401-525	Cambridge PET
A2 Pre-Intermediate	You can communicate in a range of everyday social and travel contexts. Improve by developing your speaking, grammar and vocabulary.	3-4	0-31	301-400	N/A
A1 Elementary	You can understand English used in everyday situations if the speaker speaks clearly and slowly. Improve by developing your listening and vocabulary.	2-3	N/A	151-300	Cambridge KET
0 Beginner	You can speak and understand English in a very limited way.	1-2	N/A	0-151	N/A

Our programmes at a glance

Programme	Intensive English	Semi-Intensive English (Australia only)	Standard English	Vacation and Travel English* (USA only)	Course Length	Start Dates	Levels
General English	28 lessons/week; 20 plus 8 electives	24 lessons/week; 20 plus 4 electives	20 lessons/week	16 lessons/week	1-50 weeks	Every Monday	All
Communication Skills	28 lessons/week; 20 plus 8 electives	24 lessons/week; 20 plus 4 electives	20 lessons/week	16 lessons/week	1-12 weeks	Every Monday	Intermediate to Advanced
Pathways/ English for Academic Purposes	28 lessons/week or 20 plus 8 electives	N/A	N/A	N/A	One to four 10-11 week terms	See page 27	Intermediate to Advanced
Exam Preparation	28 lessons/week; 20 plus 8 electives	N/A	20 lessons/week	16 lessons/week	4 weeks minimum	IELTS/TOEFL every Monday; FCE/CAE (see page 27)	Intermediate to Advanced
				*no student visa required			

General English Intensive Programme

Take our Intensive English programme with your choice of engaging electives. Customise your coursework, deepen your knowledge and make faster progress on your path to English proficiency.



At a glance:

Starts every Monday
Minimum age: 16
Maximum class size: 15
Course length: 1-50 weeks
Minimum entry level: Beginner
Lessons per week: 20x 50-minute lessons plus 8x 50-minute elective lessons (see course matrix on pages 30-31)



Course highlights:

- Flexible start and end dates to match your schedule
- Morning or afternoon classes according to the school timetable
- Course materials and online supplementary coursework included
- Additional one-to-one lessons available (at additional cost)
- Ongoing progression and assessment will ensure you're getting the level of instruction you need.

Taught at:



Boston, Fort Lauderdale, Los Angeles, New York, San Diego, San Francisco



Brighton, Cambridge, Hastings, Central London, London Greenwich, Oxford



Toronto



Brisbane, Melbourne, Surfers Paradise, Sydney



Auckland

Semi-Intensive English (Australia only)

For students who are looking for a learning experience between standard and intensive English classes, or want to apply for a student visa, the semi-intensive class offers:

- 20x 50-minute lessons
- 4x 50-minute elective lessons.

Choose Your Electives

Make your time with us even more valuable - add electives to help improve your English in an area that will most help you to achieve your personal goals.

Grammar Practice

Get extra grammar practice and work on your foundation in English by taking this elective.

Building Vocabulary

Take this elective to learn how and when to use a wide variety of English language words and phrases.

Conversation Skills

Build your speaking confidence by improving your conversation skills, allowing you to better understand, and be better understood, in English.

English for Academic Purposes

Develop academic study skills and grow the confidence needed for studying at college or university.

Exam Preparation

Get ready to show colleges and universities how much your English language skills have improved. Take this elective to help you prepare for IELTS and TOEFL exams.

Business Communication Skills

Take this elective to practise your business-related speaking and writing skills.

For intensive courses:

With some electives, including Business Communication Skills as well as Exam Preparation courses, you can book in advance. For most of our courses, you choose your elective when you arrive. Includes 8x 50-minute lessons per week on one or two elective topics. You can change your electives every four weeks.

For semi-intensive courses: (available in Australia only)

Includes 4x 50-minute lessons a week. You can change your electives every four weeks.

Visit embassyenglish.com or ask your local agent to find out which electives are available at each of our study centres.

Standard Programme

Whatever your level, our Standard English programme is the ideal way to develop your speaking, listening, reading and writing skills for everyday use.



At a glance:

- Starts **every Monday**
- Minimum age: **16**
- Maximum class size: **15**
- Course length: **Minimum 1 week**
- Minimum entry level: **Beginner**
- Hours per week: **20x 50-minute lessons**

Course highlights:

- Flexible start and end dates to match your schedule
- Morning or afternoon classes according to the school timetable
- Available at all levels to maximize learning
- Includes all print and online materials
- Additional one-to-one lessons available (at additional cost)
- Ongoing progression and assessment will ensure you're getting the level of instruction you need.



Taught at:



Boston, Fort Lauderdale, Los Angeles, New York, San Diego, San Francisco



Brighton, Cambridge, Hastings, London Central, London Greenwich, Oxford



Toronto



Brisbane, Melbourne, Surfers Paradise, Sydney



Auckland



There are people here from Brazil, from Turkey, from all over – so it's good for improving my English, as we all need to speak the same language together.

Alice, France

Vacation and Travel English

* **No Student Visa Required**

Make your vacation to the United States more than just a trip. Improve your English skills while you're visiting one or more of the most popular vacation destinations in the USA.



At a glance:

- Starts **every Monday**
- Minimum age: **16**
- Maximum class size: **15**
- Course length: **1-12 weeks**
- Minimum entry level: **Beginner**
- Hours per week: **16x 50-minute lessons**



Course highlights:

- Come to the USA on a tourist visa or under the visa waiver programme; no student visa required
- Morning or afternoon classes to match your schedule
- 16x 50-minute core lessons Monday through Thursday
- Includes all print and online materials
- This course is perfect for students who want to combine part-time study with a vacation in the USA.

Taught at:



Boston, Fort Lauderdale, Los Angeles,
New York, San Diego, San Francisco



Now I know so much more grammar, and I can correct my own mistakes. I took some online tests, and they showed I really have improved.
Abdulrahman, Saudi Arabia

Long-Term English Language Semester Abroad

*Free English Exam With This Course

Bring your English to life during your language semester abroad. Make lifelong friends over one, two, three or even four terms and meet students from around the world throughout the semester. Perfect for students taking a gap year. Plus, get a free English exam - FCE, CAE, IELTS, TOEFL, or TOEIC - appropriate to each course or semester.

At a glance:

Start: **Flexible start dates**
 Minimum age: **16**
 Maximum class size: **15**
(18 in Australia)
 Minimum entry level:
Pre-intermediate A2
 Hours per week: **20x 50-minute lessons (standard programme), 20 + 8x 50-minute lessons (intensive)**

Course highlights:

- Four terms per year:
 Jan 5th - Mar 20th / Mar 30th - Jun 12th
 Jun 29th - Sept 11th / Sept 21st - Dec 4th
- Morning or afternoon classes depending on the school timetable
- Course materials and online supplementary coursework included
- 1-2 weeks fixed break between terms
- One-on-one lessons available for an additional fee
- University Pathway counselling for university or college.

Taught at:



Boston, Fort Lauderdale, Los Angeles, New York, San Diego, San Francisco



Brighton, Cambridge, Hastings, Oxford, Central London, London Greenwich



Toronto



Brisbane, Melbourne, Sydney

	Levels	Course	Free exam*
First Term	Pre-Intermediate	General English	TOEIC / FCE / IELTS / TOEFL / CAE*
Second Term	Intermediate	Communication Skills	
Third Term	Upper Intermediate	Exam Preparation	
Fourth Term	Advanced	Communication Skills or Exam Preparation	

*Please check which exams are available in your chosen centre (see study centre pages and/or exam preparation pages)

Communication Skills

Develop the oral communication and presentation skills you need to succeed in work and academic settings. Improve your overall speaking ability and gain confidence in meetings, classes and social situations.



At a glance:

Starts **every Monday**
 Minimum age: **16**
 Maximum class size: **15**
 Course length: **Minimum 2 weeks**
 Entry levels: **Intermediate B1, Advanced C1**
 Hours per week: **20x 50-minute lessons (standard programme)**
20 + 8x 50-minute lessons (intensive programme)



Course highlights:

- Two programmes: **Standard** and **Intensive**
- Course materials and online supplementary coursework included
- Private lessons available for an additional fee
- University Pathway counselling for university or college.

Taught at:



Boston, New York, Fort Lauderdale, Los Angeles, San Diego, San Francisco



Brighton, Cambridge, Central London, London Greenwich, Oxford



Toronto



Brisbane, Melbourne, Sydney



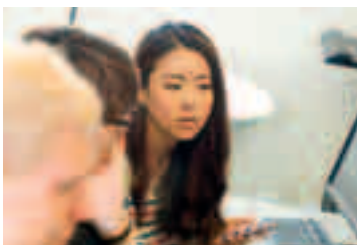
I'm staying with a family, and I like that. There are four children, and I talk with them all the time.

Alexander, Venezuela

English in Action

Real-World English

Practise and improve your English skills in a real-world community or educational environment after you complete your schooling.



At a glance:

Placement length: 4-8 weeks

Minimum entry level: **Intermediate**

Minimum age: 18

Taught at:



Boston, Fort Lauderdale, Los Angeles,
New York, San Diego, San Francisco

Placement requirements:

· Placement programme:

4 or 8-week placement upon completion of your Intensive Programme of 4 weeks or more, and during the 60 days you are allowed to remain in the country (in accordance with student visa requirements)

· An oral test, usually conducted by phone, is required before acceptance

· Skills workshops are provided before your placement to prepare you for an authentic English environment outside the classroom.

- Students must reach **Intermediate+ Level** to have access to the placement
- Study Care insurance is mandatory during the placement
- Looks great on your CV
- Receive an **English in Action** certificate upon completion.



Interactive whiteboards are a key to learning fast. The quick access to pictures, videos and documents really makes learning English easier.

Thi Bich, Vietnam

Embassy Pathways

English for Academic Purposes

Develop your English skills for university. Successful course completion in the USA, Canada or Australia guarantees admission to one of our university or educational partners without having to take IELTS or TOEFL exams.

At a glance:

Maximum class size: **16**
(18 in Australia)

Minimum age: 16

Course length: **10 weeks (Australia)**
11 weeks (USA, Canada)

Minimum entry level: **Intermediate B1+**

Hours per week: **28x 50-minute lessons (intensive)**

Course highlights:

- Morning or afternoon classes depending on the school timetable
- Course materials and online supplementary coursework included
- 1-2 weeks fixed break (not in Australia)
- One-to-one lessons available for an additional fee
- University Pathway counselling for university or college.

Taught at:



Boston, New York,
Los Angeles



Brisbane, Melbourne, Sydney



Toronto

Entry level and course length

If your starting score is IELTS 4.5/TOEFL 32-34	And your end goal score is IELTS 5.0/TOEFL 35-45	You will be studying for 1 semester
	And your end goal score is IELTS 5.5/TOEFL 46-59	You will be studying for 2 semesters
	And your end goal score is IELTS 6.0/TOEFL 60-78	You will be studying for 3 semesters
If your starting score is IELTS 5.0/TOEFL 35-45	And your end goal score is IELTS 5.5/TOEFL 46-59	You will be studying for 1 semester
	And your end goal score is IELTS 6.0/TOEFL 60-78	You will be studying for 2 semesters
If your starting score is IELTS 5.5/TOEFL 46-59	And your end goal score is IELTS 6.0/TOEFL 60-78	You will be studying for 1 semester

Embassy Pathways

If you're interested in going to university:

Successful completion of this course guarantees admission into one of our university or educational partners without your having to take an IELTS or TOEFL exam. We offer guidance about our university partners' academic admissions process before you enrol for this course.

Semester length:

10, 20, 30 or 40 weeks (Australia)

11, 22, 33 or 44 weeks (USA, Canada)

Entry requirement:

High school completion and successful completion of this course as part of the Embassy Pathways Programme.

Course locations and dates:

Australia (10 weeks):

December 29th (2014) - March 6th

February 2nd - April 10th

March 9th - May 15th

April 13th - June 19th

May 18th - July 24th

June 22nd - August 28th

July 27th - October 2nd

August 31st - November 6th

October 6th - December 11th

November 9th - January 22nd (2016)

December 14th - February 2nd (2016)

Canada, USA (11 weeks):

January 5th - March 20th

March 30th - June 12th

June 29th - September 11th

September 21st - December 4th

Exam Preparation

As experienced providers of Exam Preparation courses, Embassy English can help you achieve your university and career objectives. We offer intensive and standard programmes for each exam.

IELTS

Educational institutions, employers and government immigration agencies are increasingly choosing IELTS as part of their admission, recruitment and entry processes.

At a glance:

IELTS standard and intensive programme

Start dates: Fixed

Maximum class size: 15

Minimum age: 16

Course length: Minimum 4 weeks

Entry level: Intermediate B1

Hours per week: 20x 50-minute core IELTS preparation lessons, (standard).

20 + 8x 50 minute electives (intensive)

(see page 21)



Available in:
Central London, London
Greenwich, Oxford



Brisbane, Melbourne,
Surfers Paradise, Sydney
(standard only)



Auckland

General English elective programme (IELTS preparation)

Starts every Monday morning and/or afternoon according to the school timetable

Hours per week: 20x 50-minute core General English lessons, 8x 50-minute IELTS preparation elective lessons



Available in:
Brighton, Cambridge, Central
London, London Greenwich, Oxford



Brisbane, Melbourne,
Surfers Paradise, Sydney

TOEFL

TOEFL is a widely respected English language test. USA universities often require TOEFL scores for admission.

At a glance:

TOEFL standard and intensive programme

Start dates: Fixed

Maximum class size: 15

Minimum age: 16

Course length: Minimum 4 weeks

Entry level: Intermediate B1

Hours per week: 20x 50-minute core IELTS preparation lessons, 20 + 8x 50-minute

electives (see page 21) (intensive)



Available in:
Boston, New York, San Francisco

General English elective programme (TOEFL preparation)

See page 21 for more details

Starts every Monday morning and/or afternoon according to the school timetable

Hours per week: 20x 50-minute core General English lessons, 8x 50-minute TOEFL preparation elective lessons



Available in:
Fort Lauderdale, Los Angeles,
San Diego



Toronto

Cambridge ESOL, FCE & CAE

Cambridge English exams are accepted by over 15,000 universities, employers and governments around the world.

At a glance:

Cambridge intensive programmes:

Start dates: See table on page 29

Maximum class size: 15

Minimum age: 16

Course length: 9, 10, 11 or 12 weeks

Entry level: (FCE) Intermediate B1;

(CAE) Advanced C1

Hours per week: 20x 50-minute core Cambridge preparation lessons



Available in:
Brighton (FCE only), Cambridge
(FCE and CAE), Oxford



New York, San Diego



Sydney, Melbourne (FCE only)

Exam Dates / 2015

Cambridge exam schedule

Exam/Location	Weeks	Course Start Date	Course End Date	Exam Date
JANUARY				
FCE in Oxford and Cambridge	9	Monday Jan 5th	Friday March 6th	Saturday March 7th
FCE (except Oxford and Cambridge)	10	Monday Jan 5th	Friday March 13th	Friday March 13th
CAE	10	Monday Jan 5th	Friday March 13th	Saturday March 14th
MARCH				
FCE	10	Monday March 30th	Friday June 5th	Tuesday June 9th (Saturday June 6th in Oxford, Melbourne and Sydney)
CAE	10	Monday March 30th	Friday June 5th	Wednesday June 10th (Saturday June 6th in Oxford, Sydney)
JUNE				
FCE in Sydney and Melbourne	10	Monday June 15th	Friday August 21st	Thursday August 20th
CAE in Sydney	10	Monday June 15th	Friday August 21st	Thursday August 20th
SEPTEMBER				
FCE	10	Monday September 21st	Friday November 27th	Tuesday December 1st
FCE in Cambridge, Oxford and Brighton	12	Monday September 21st	Friday December 11th	Saturday December 12th
CAE	10	Monday September 21st	Friday November 27th	Wednesday December 2nd
CAE in Oxford and Cambridge	11	Monday September 21st	Friday December 4th	Saturday December 5th

Embassy English Courses

Course/ Study Centre	General English Standard Programme	General English Intensive Programme	General English Beginners Level	General English Semi-Intensive 24 (Australia)	Vacation and Travel English	EAP English for Academic Purposes
Central London	■	■	■			
Brighton	■	■	■			
Cambridge	■	■				
Hastings	■	■	■			
London Greenwich	■	■				
Oxford	■	■	■			
Boston	■	■	■		■	■
Fort Lauderdale	■	■			■	
Los Angeles	■	■			■	■
New York	■	■	■		■	■
San Diego	■	■	■		■	
San Francisco	■	■			■	
Toronto	■	■	■			■
Brisbane	■	■		■		■
Melbourne	■	■	■	■		■
Surfers Paradise	■	■		■		
Sydney	■	■		■		■
Auckland	■	■		■		

Language Semester Abroad	Communication Skills	Business Communication Skills (elective)	English in Action	Cambridge ESOL, CAE and FCE Intensive	IELTS Preparation	TOEFL Preparation
■	■	■			■	
■	■	■		■	■	
■	■			■	■	
■	■				■	
■	■	■		■	■	
■	■	■	■			■
■	■	■	■			■
■	■	■	■			■
■	■	■	■	■		■
■	■	■	■	■		■
■	■	■	■			■
■	■	■				■
■	■	■			■	
■	■	■		■*	■	
		■			■	
■	■	■		■	■	
					■	

*FCE only

Canada
Toronto

UK
Central London
Brighton
Cambridge
Hastings
London Greenwich
Oxford

USA
Boston
Fort Lauderdale
Los Angeles
New York
San Diego
San Francisco

Embassy English Study

Take full advantage of learning with Embassy English as you visit some of the most popular travel destinations in the world. As an Embassy English student, you can **bring English to life** by taking part in the activities that make each city stimulating and dynamic. And you get to practise your new English skills with both native and non-native English speakers as you explore each city's greatest attractions.

Centres

18 global locations to choose from.

Australia

Brisbane
Melbourne
Surfers Paradise
Sydney

New Zealand

Auckland



UK

Imagine living and studying English in the artistic seaside towns of **Brighton** or **Hastings**, the renowned university cities of **Oxford** or **Cambridge**, or one of the most desirable travel destinations in the world, **London**, where a brand new Embassy English study centre puts you right in the middle of the action.



Central London

New This Year!



Buckingham Palace



View from the London Eye



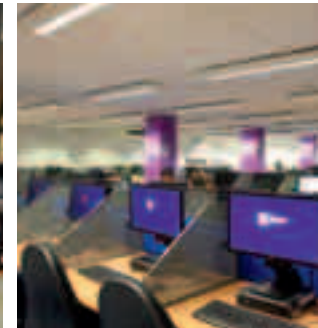
The National Gallery



Carnaby Street



Covent Garden Market



The Shard



Somerset House



Big Ben



Guardsmen Trooping the Colour



Study English in the heart of London, world-famous for culture, night life, entertainment and shopping. Plus, enjoy easy access by public transportation around Great Britain and throughout the rest of Europe.

Free Wi-Fi
available at
this centre

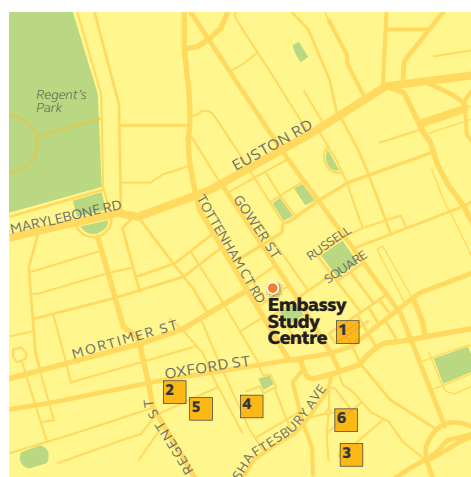


Meet the **Centre Director:**



“Now you can learn English with us in the heart of London, world famous for its night life, entertainment and shopping. Our brand-new study centre is beautiful and modern.”

Victoria Moyle, Centre Director



- 1 The British Museum
- 2 Oxford Street/Regent Street
- 3 Covent Garden
- 4 Soho - great for restaurants
- 5 Carnaby Street - popular for shopping
- 6 Leicester Square - cinema/theatre district

Accommodation:

- Single and shared en suite
- All rooms include Wi-Fi, a flat screen TV, fridge freezer and microwave oven
- Roof terrace with great views
- 15-minute direct tube journey to the study centre
- Bike storage

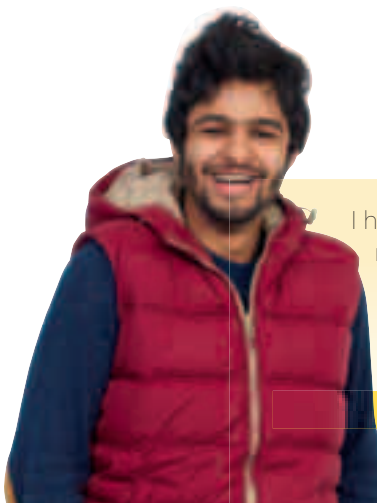
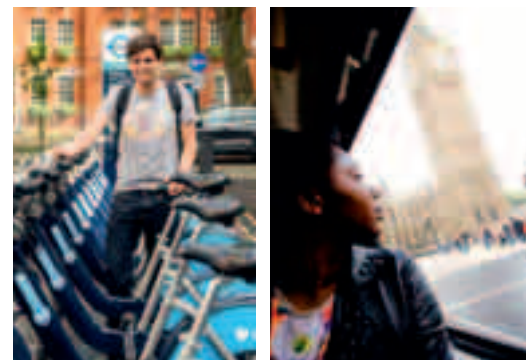
Study centre highlights:

- Wi-Fi enabled
- IT suite
- Library
- Interactive whiteboards
- Student lounge
- Activities

Courses:

- Intensive Programme
- Standard Programme
- Beginners English
- English for Academic Purposes
- Language Semester Abroad
- Communication Skills
- Exam Preparation: IELTS
- One-to-one lessons

See more of our school online - visit embassyenglish.com/central-london



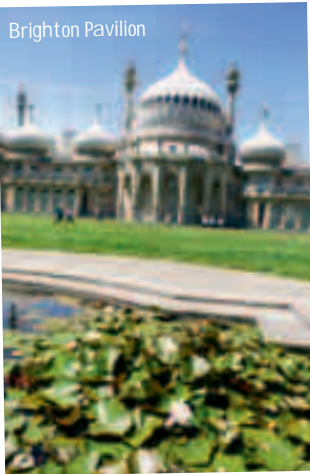
I have made many friends here. I meet my friends outside the school for coffee, and we just speak in English - everybody is friendly.

Mohammad, United Arab Emirates

Brighton

Fun, Artistic Seaside City

Brighton Pavilion



Brighton Beach



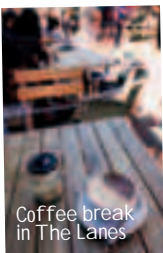
Brighton Museum and Art Gallery



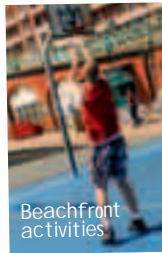
Brighton Dome



Shopping and fashion styling



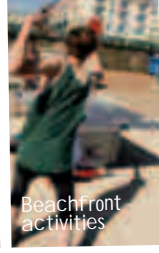
Coffee break in The Lanes



Beachfront activities



Brighton Watersports



Beachfront activities



With the seashore, cafés and a thriving art and music scene on your doorstep, you can enjoy the best of what this lively city has to offer within walking distance of our bright and modern study centre. And with central London just 50 minutes away by train, you'll never run out of places to explore.

Free Wi-Fi
available at
this centre



Meet the Centre Director:



“Brighton is a lively and attractive seaside town. It has an exciting music and arts scene - lots to do after classes in our modern high-tech study centre. London, with all that a big city has to offer, is just a 50-minute train ride away.”
Nicholas Smith, Centre Director

Accommodation:

Residential

(Summer only)

- Voyager House
- On campus and nearby residences with self-catering or half-board options

(Year round)

- Stylish study hotel
- En suite single rooms
- Cafeteria in Brighton study centre for half-board meal plan

Homestay

- Available across the Brighton area
- Single and twin rooms
- Half-board (14 meals)
- Bed-and-breakfast option (18+)

Study centre highlights:

- IT suite
- Interactive whiteboards
- Student lounge
- University counselling in your native language (for Arabic, Chinese, Turkish, Japanese, French, Spanish and Russian students)
- Cafeteria
- Nurse available every day
- Extensive programme of activities
- Weekend excursions to other UK and European cities

Courses:

- Intensive Programme
- Standard Programme
- Beginners English
- Communication Skills
- Exam Preparation: FCE (core), IELTS (elective)
- Language Semester Abroad
- One-to-one programmes



- 1 Devil's Dyke - an outstanding natural beauty spot
- 2 North Laine - great boutique shopping
- 3 Royal Pavilion and Brighton Dome
- 4 The Lanes - historic shopping quarter
- 5 Brighton Sea Life Centre
- 6 Brighton Pier
- 7 Odeon 8 screen cinema
- 8 Duke of York cinema

See more of our school online -
visit [embassyenglish.com/
brighton](http://embassyenglish.com/brighton)



I've been here two months and I've really improved my English! I love Brighton, it's near London and also has the beach.

Eunsung, South Korea

Cambridge

Culture and Charm



Fitzwilliam Museum



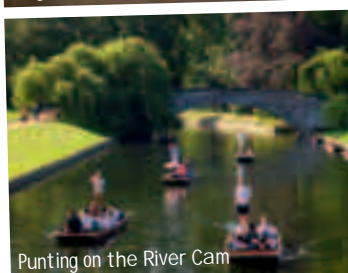
King's College



King's College Chapel



Cycle-friendly city



Punting on the River Cam



Live and study English in the home city of the University of Cambridge, just a short cycle ride away from our centre and residence. **Cambridge** is a cyclist's paradise, with lots of bike lanes, flat paths and beautiful parks. It's also a cultural hub, with cinemas, theatres, galleries, museums, live music venues and world-class shopping. And London is only an hour away.

Free Wi-Fi
available at
this centre



Meet the Centre Director:



“We hope to see you in Cambridge, the city that has everything: live music, great shopping and lots of green spaces. Our study centre, located on a leafy street amongst the University colleges, is just a quick bike ride from all the action.”
Victoria Moyle, Centre Director

Accommodation: Residential

- Short cycle ride from our study centre
- Single rooms
- En suite
- Shared kitchen facilities for self-catering

Homestay

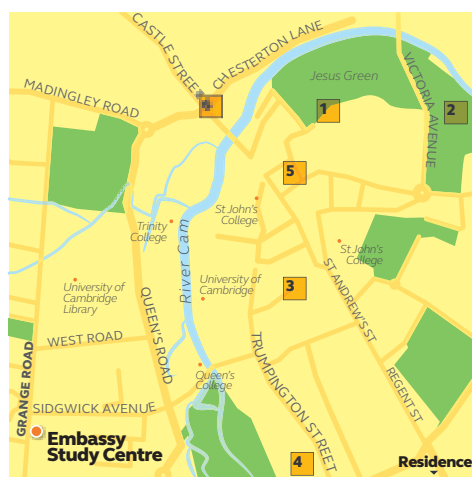
- Available throughout the Cambridge area
- Single rooms (twins available in summer)
- Half-board (14 meals)
- Travel to school by bus or bicycle

Study centre highlights:

- Wi-Fi enabled
- IT suite
- Interactive whiteboards
- University counselling
- Cafeteria
- Courtyard and gardens
- Extensive programme of activities
- Weekend excursions to other UK and European cities

Courses:

- Intensive Programme
- Standard Programme
- English for Academic Purposes
- Exam Preparation: FCE, CAE (core), IELTS (elective)
- Language Semester Abroad
- One-to-one Lessons



- 1 Jesus Green - go swimming at the Jesus Green Outdoor Swimming Pool
- 2 Midsummer Common - home to fairs and events
- 3 Cambridge Corn Exchange - famous concert and event venue
- 4 Fitzwilliam Museum
- 5 ADC Theatre - comedy and music venue
- 6 Kettle's Yard - gallery and museum

See more of our school online
- visit [embassyenglish.com/
cambridge](http://embassyenglish.com/cambridge)

Our lessons are really great, our teachers teach us in a fun way. They teach everyday English, not just grammar. We have lots of places to go after school - places where we can go and make new friends.
Felipe, Brazil

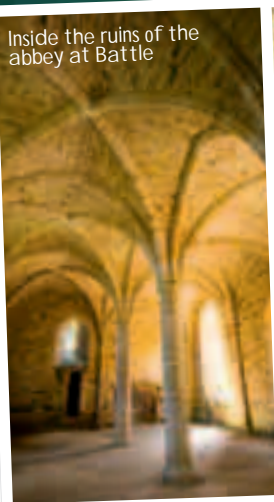
Hastings

A Family Atmosphere

Hastings seafront



Inside the ruins of the abbey at Battle



Georgian architecture



Fisherman's huts



Fishing boats



East Cliff funicular railway



Students love to stay in **Hastings**. Its seafront, beach, shops, art galleries and other attractions are close by for you to visit and enjoy.

Free Wi-Fi
available at
this centre



Meet the Centre Director:



“Come to Hastings and study in our restored Victorian building near the sea. Our staff and students will treat you like family.”

Reg Veale, Centre Director

Accommodation:

Homestay

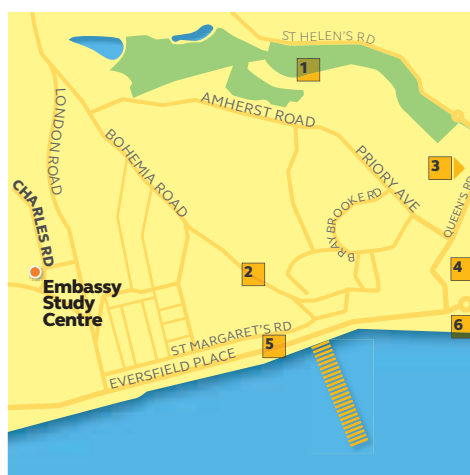
- Available across the Hastings area
- Single and twin rooms
- Half-board (14 meals)

Study centre highlights:

- Wi-Fi enabled
- IT suite
- Interactive whiteboards
- Student lounge
- Games room
- Attractive grounds
- Cafeteria
- University counselling
- Extensive programme of activities
- Weekend excursions to other UK and European cities

Courses:

- Intensive Programme
- Standard Programme
- Beginners English
- One-to-one Lessons



- 1 Alexandra Park and Café
- 2 Hastings Museum and Art Gallery
- 3 Smuggler's Adventure - historical theme park
- 4 Hastings Castle
- 5 White Rock Theatre - music and events venue
- 6 Hastings Adventure and Crazy Golf

See more of our school online - visit embassyenglish.com/hastings



All the people in my class are about my age, so it's perfect for making friends. Before I came here I was shy speaking English, but now I'm confident, I'm not afraid to speak and make mistakes as I learn.

Constanza, Spain

London Greenwich

Close to the Action

O2 Arena



Royal Greenwich



The Cutty Sark



Greenwich Meridian Line



Greenwich Market



The Old Royal Naval College



Tower of London



Borough Market



15 minutes from Central London, our modern campus features a large library and green parks to study and play in. Historic Greenwich, the birthplace of King Henry VIII and Queen Elizabeth I, is nearby. Be sure to visit Greenwich Market, where locals have shopped since the 14th century.

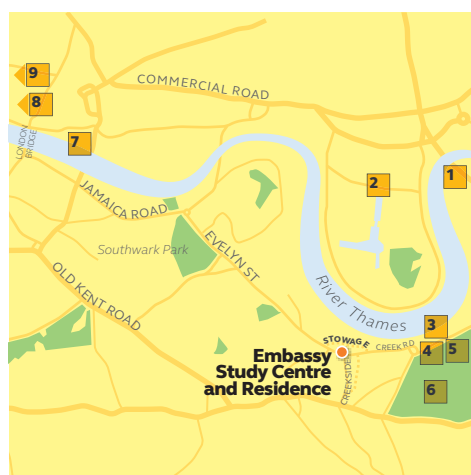
Free Wi-Fi
available at
this centre



Meet the Centre Director:



“Our modern study centre is close to central London, and even closer to historic Greenwich, with its riverside attractions and amazing views of London from the Greenwich Observatory.”
David Rowland, Centre Director



- 1 O2 Arena - music and events venue
- 2 Canary Wharf business district
- 3 Cutty Sark - the last surviving tea clipper ship
- 4 National Maritime Museum
- 5 Greenwich Market - historic market set within a World Heritage site
- 6 Royal Observatory Greenwich
- 7 Tower of London
- 8 Covent Garden
- 9 Oxford Street/Bond Street shopping

Accommodation: Residential

- Live in on-campus housing alongside British students
- Single en suite rooms on campus
- Meals on your own plus half-board at the school canteen (14 meals/week)

Homestay

- Available throughout the London area
- Single and twin rooms
- Half-board (14 meals/week)
- Bed and breakfast option (minimum age 18)

Study centre highlights:

- Wi-Fi enabled
- IT suite
- Interactive whiteboards
- Student lounge
- University counselling
- Library
- Cafeteria
- Extensive programme of activities
- Weekend excursions to other UK and European cities

Courses:

- Intensive Programme
- Standard Programme
- Communication Skills (core)
- Exam Preparation: IELTS
- Language Semester Abroad
- One-to-one lessons

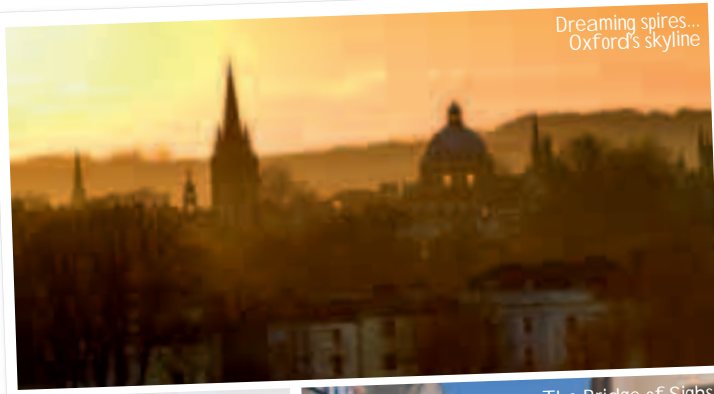
See more of our school online - visit embassyenglish.com/london-greenwich



When I arrived here, I couldn't speak one complete sentence in English. Now I can talk with native speakers without a problem.
Jorge, Brazil

Oxford

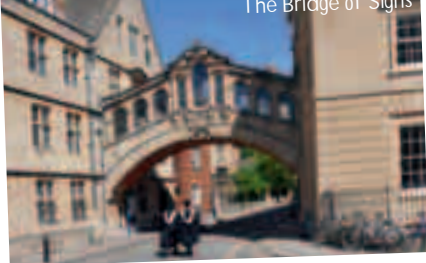
Modern and Historic



Dreaming spires...
Oxford's skyline



Radcliffe Camera



The Bridge of Sighs



Ashmolean Museum



University of Oxford
merchandise



University of Oxford
Botanic Garden



Boats
for hire

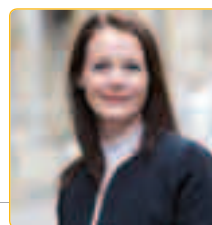


Choose **Oxford** to live and study in modern facilities surrounded by the buildings of Oxford University, the oldest English-speaking university in the world. It's a historic small city only an hour from London, providing good travel links throughout the UK and to the rest of Europe.

Meet the Centre Director:

“Choose Oxford, the perfect blend of old and new. Our modern study centre is surrounded by the beautiful traditional buildings of Oxford University. With London only an hour away, Oxford is the perfect place to base your stay in England.”
Victoria Moyle, Centre Director

Free Wi-Fi
available at
this centre



Accommodation: Residential

- Walk to school
- Single and twin en suite rooms
- Meals on your own

Homestay

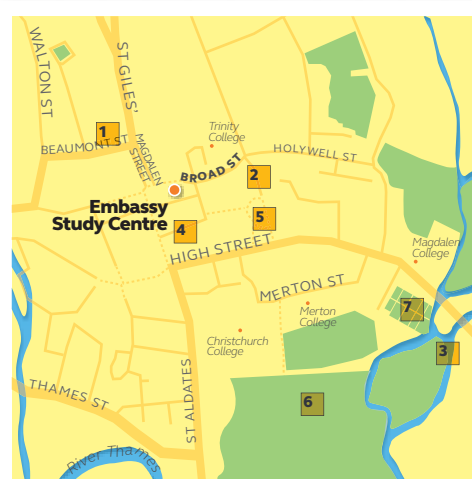
- Available across the Oxford area
- Single and twin rooms
- Half-board (14 meals)
- Bed-and-breakfast option (18+)

Study centre highlights:

- Wi-Fi enabled
- IT suite
- Interactive whiteboards
- Resource centre
- Student lounge
- University counselling
- Extensive programme of activities
- Weekend excursions to other UK and European cities

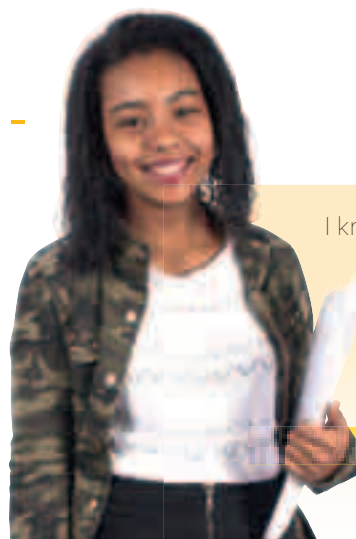
Courses:

- Intensive Programme
- Standard Programme
- Beginners Programme
- Communication Skills
- Exam Preparation: FCE, CAE, (elective) IELTS
- Language Semester Abroad
- One-to-one lessons



- 1 Ashmolean Museum of Art and Archaeology
- 2 Bodleian Library – one of the oldest libraries in Europe
- 3 O2 Academy Oxford - music venue
- 4 Covered Market - indoor bazaar for artisan grocers and boutique clothing
- 5 Radcliffe Camera – iconic, domed library
- 6 Christchurch Meadow
- 7 University of Oxford Botanic Garden
- 8 Christchurch College, featured in the Harry Potter films

See more of our school online -
visit [embassyenglish.com/
oxford](http://embassyenglish.com/oxford)



I knew when I arrived here that this was the right school for me, and I knew I'd make friends. My English writing has improved and I've learned a lot of vocabulary.
Diana, Portugal



USA

Whether you choose to live and study in the energised and exciting environment of **New York City**, the university centre of **Boston**, the slower-paced atmosphere of California's **Los Angeles**, **San Francisco** or **San Diego**, or near the stunning and sunny beaches of **Fort Lauderdale**, you'll learn and live English in a truly American environment.



Boston

A Perfect Student Hub



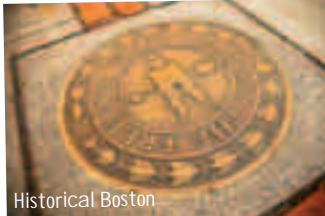
Boston Public Library



Harvard University



Faneuil Hall



Historical Boston



Quincy Market



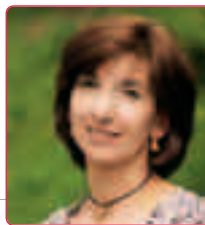
Boston Common Fountain



Boston is a city where you feel like learning; it's full of students, book shops, coffee shops - and it's the home of Harvard University. Our centre is in the perfect location, right in the heart of the city just steps from the green and relaxing Boston Common, so it's easy to get around. Our superb, friendly teachers and staff are looking forward to meeting you.



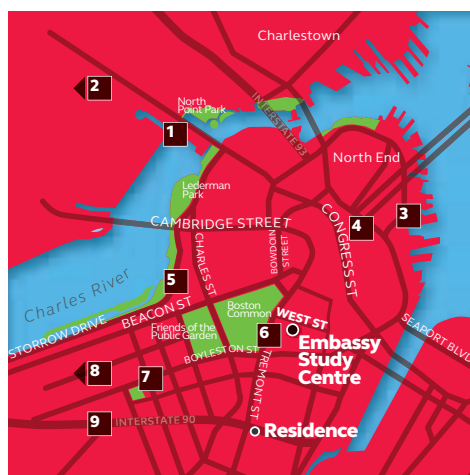
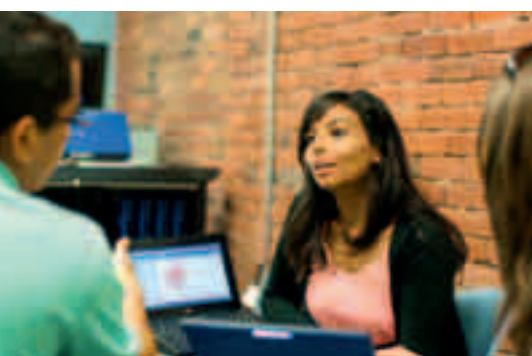
Meet the Centre Director:



"Boston is known as America's walking city. It's also a city where you feel like studying - there are universities, libraries, coffee shops and so many students! You can find everything here - beaches, mountains, waterfront, parks, shopping, sports, restaurants, theatres, history... and we hope you!"

Linda Walsh, Centre Director

Free Wi-Fi
available at
this centre



- 1 Science Museum
- 2 Harvard University and MIT
- 3 New England Aquarium
- 4 Faneuil Hall and Quincy Market - great shopping
- 5 Esplanade - beautiful riverside setting for free concerts and movies
- 6 Freedom Trail - explore Boston's historic past, starting at Boston Common
- 7 Copley Square - visit the Prudential Tower and Boston Public Library
- 8 Fenway Park - home of the Boston Red Sox
- 9 Museum of Fine Arts

See more of our school online - visit embassyenglish.com/boston

Accommodation:

Residential

- Single and twin rooms 25-minutes from school
- En suite bathrooms
- Fitness centre
- Café
- Self-catering student apartment option

Homestay

- Available across the greater Boston area
- Single and twin rooms
- Half-board (14 meals)

Study centre highlights:

- Wi-Fi enabled
- IT suite
- Media centre
- Interactive whiteboards
- Student lounge
- Centrally located
- Activities

Courses:

- Intensive Programme
- Standard Programme
- Beginners Programme
- Communication Skills (core)
- English in Action
- English for Academic Purposes
- Exam Preparation: TOEFL
- Language Semester Abroad
- Vacation and Travel English
- One-to-one lessons



This is the best experience that I've ever had. New people, new cultures, learning English!
Gimena, Argentina

Fort Lauderdale

Fun on the Beach



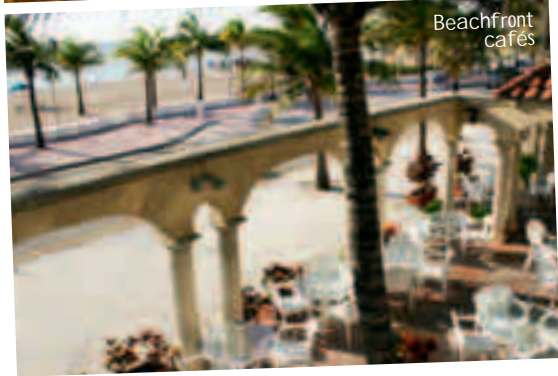
Downtown Fort Lauderdale



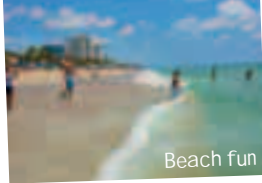
Stunning green spaces



Intra-coastal Waterways



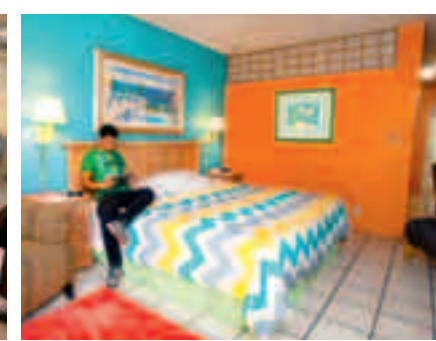
Beachfront cafés



Beach fun



Bridge on Riverwalk



This sunny and laid-back beach community is perfect for a learning holiday. Our study centre, built specifically for Embassy, is in the heart of downtown, near **Fort Lauderdale's** stunning beaches, river-front cafés, green spaces and nightlife. Our residence options are just steps from the beach or right next to the school in downtown. Close to Miami, South Beach and Orlando and its magical parks, including Walt DisneyWorld.



Free Wi-Fi
available at
this centre

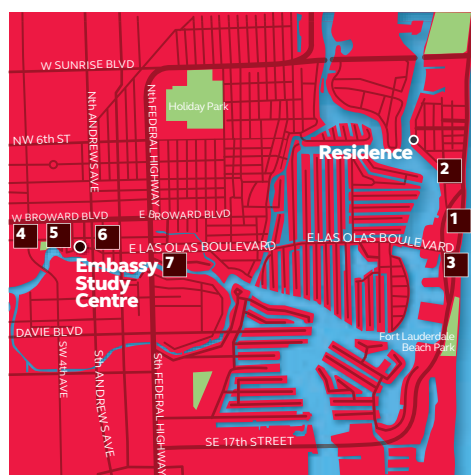


Meet the Centre Director:



"I invite you to learn and relax on the golden beaches of Fort Lauderdale, one of the world's favourite tropical getaways. Our downtown school is right in the cultural heart of the city, and our warm teachers and staff will make your studies a breeze."

Camilo Fontecilla, Centre Director



- 1 Beach Place - shopping and entertainment
- 2 Fort Lauderdale beach
- 3 Las Olas beach
- 4 Himmarshee Village - thriving entertainment district
- 5 Museum of Discovery and Science
- 6 Fort Lauderdale Museum of Art
- 7 Riverfront cruises and water taxi

Accommodation:

Residential (minimum age 16)

- Single and twin apartment rooms with air conditioning, cable TV, laundry and a swimming pool
- En suite
- Self-catering

Homestay

- Available across the Fort Lauderdale area
- Guaranteed native or near-native English-speaking hosts
- Single and twin rooms
- Half-board (14 meals)

Study centre highlights:

- Wi-Fi enabled
- IT suite
- Interactive whiteboards
- University counselling
- Activities
- Residence with pool
- Close to the beach

Courses:

- Intensive Programme
- Standard Programme
- Communication Skills (core)
- Exam Preparation: TOEFL (elective)
- Language Semester Abroad
- One-to-one lessons
- Vacation and Travel English

See more of our school online -
visit [embassyenglish.com/
fort-lauderdale](http://embassyenglish.com/fort-lauderdale)



I was worried that I would be homesick, but now it's ok because I have many friends - I want to come back!
Khaleed, Kuwait

Los Angeles

Beautiful Beachside Living

Walt Disney
Convention Centre



Long Beach



Hollywood



Rodeo Drive



Beverly Hills
shopping



Learn and live in beautiful Long Beach, minutes away from some of the most beautiful beaches in the world and close to the glamour and excitement of Hollywood. An open plan design makes our Los Angeles study centre feel especially spacious and welcoming.



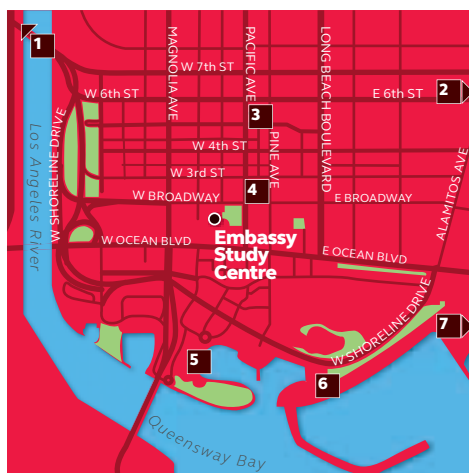
Free Wi-Fi
available at
this centre



Meet the Centre Director:



“Stay with us near the Pacific Ocean in beautiful Long Beach. In addition to beach life, you’ll have Disneyland, Hollywood and Universal Studios just a quick ride away. There’s lots to do in our glorious Southern California weather!”
Francesca Andrews, Centre Director



- 1** Hollywood and downtown LA – less than an hour away
- 2** Disneyland – 40-minutes from the Study Centre
- 3** City Place Shopping Centre
- 4** Pine Avenue – trendy retail and restaurant district
- 5** Long Beach Aquarium
- 6** Shoreline Village – restaurants, shopping and entertainment
- 7** Belmont Shore – a charming beachside community

Accommodation: Residential

- Only steps from the beach, every room features a balcony overlooking the pool and barbecue area.
- Twin room
- En suite
- Self-catering
- Refrigerator and microwave in every room

Homestay

- Available across the Los Angeles and Long Beach area
- Single and twin rooms
- Half-board (14 meals)
- Guest room (bed and breakfast only)

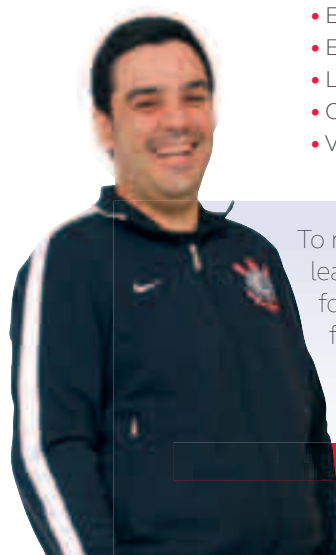
Study centre highlights:

- Wi-Fi enabled
- IT suite
- Interactive whiteboards
- Student lounge
- Activities
- University counselling
- Courtyard
- Roof terrace
- Buses and trams to popular Los Angeles attractions

Courses:

- Intensive Programme
- Standard Programme
- Business Communication Skills (core)
- English in Action
- English for Academic Purposes
- Exam Preparation: TOEFL (electives)
- Language Semester Abroad
- One-to-one lessons
- Vacation and Travel English

See more of our school online - visit embassyenglish.com/los-angeles

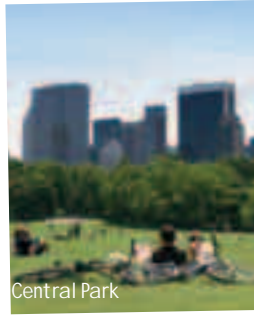


To me, Embassy is more than learning English. It's also a place for you to learn about life, culture, friendship and more.

Enrico, Brazil

New York

Life in a Fast-Paced City



With our study centre right in the heart of midtown Manhattan, you'll experience **New York** like a local. After class, you can walk to the Empire State Building and Times Square, and Central Park is just a short bus or train ride away.



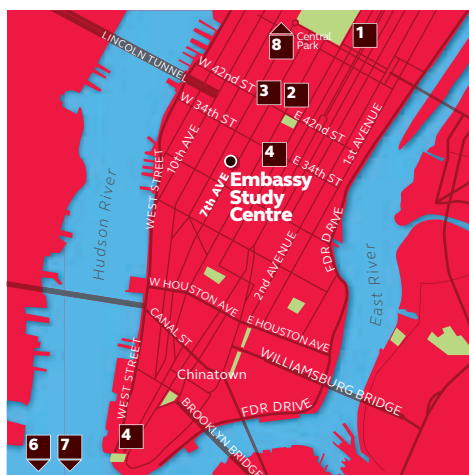
Free Wi-Fi
available at
this centre



Meet the Centre Director:



“New York has unlimited opportunities for exploration. Whether your passion is art, music, food, or fashion, the Big Apple has it. Our study centre is right in the middle of it all – the Empire State Building, Times Square, and other world-famous locations are only a few blocks away.”
Sue Skidmore, Senior VP Global Operations



- 1 Museum Mile – home of the Met, Guggenheim and many more
- 2 Radio City Music Hall
- 3 Times Square
- 4 Empire State Building
- 5 World Trade Centre Memorial
- 6 Ellis Island
- 7 Statue of Liberty
- 8 Residence (25-minutes north)

See more of our school online - visit embassyenglish.com/new-york

Accommodation: Residential

- Exercise room
- Laundry facilities
- Comfortable lounges with cable TV
- Single and twin rooms
- Shared bathrooms
- 24-hour security

Homestay

- Available in Queens, Brooklyn, Long Island and New Jersey
- Single rooms
- Half-board (14 meals)
- Bed-and-breakfast option (18+)

Study centre highlights:

- Wi-Fi enabled
- IT suite
- Interactive whiteboards
- Student lounge
- University counselling
- Activities
- Manhattan residence

Courses:

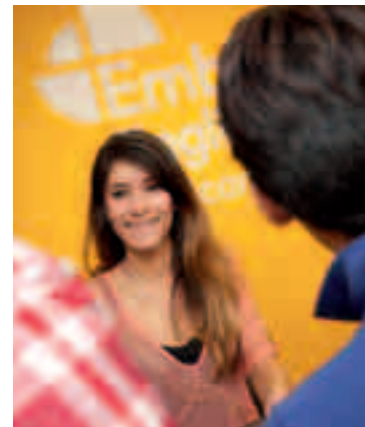
- Intensive Programme
- Standard Programme
- Including Beginner level
- Business Communication Skills (core)
- English in Action
- English for Academic Purposes
- Exam Preparation: FCE and CAE (core); TOEFL
- Language Semester Abroad
- Vacation and Travel English
- One-to-one lessons



Teachers ask us a lot of questions in class, they really encourage you to talk, not just answer “yes” or “no”. I spend time with people from other cultures, and we all speak English together when we go out to eat.
Sofia, Spain

San Diego

A Varied, Vibrant Lifestyle



San Diego is a vibrant city with amazing southern California weather and a friendly population always willing to chat with visitors. Students can experience a variety of lifestyles and cultures - beach, downtown and urban - all just minutes apart. Our residence choices are a short walk from the study centre, which offers a sunny patio and cosy student lounge with breathtaking views.

Free Wi-Fi
available at
this centre

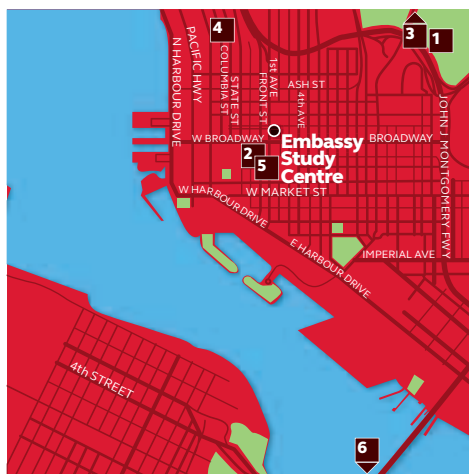


Meet the Centre Director:



“Come to San Diego for more sunny days than any other US location. Enjoy your lessons with top-rated instructors in modern classrooms with skyscraper views of the city, bay, and mountains. Then, practice your English with some of the friendliest people in America!”

Bill Hellriegel, Centre Director



- 1 Balboa Park
- 2 Gaslamp District (live music, cafés, theatre, bars, shopping...)
- 3 San Diego Zoo
- 4 Little Italy Mercato Farmers' Market
- 5 Horton Plaza - shopping mall
- 6 Roadway to Mexico

Accommodation:

Residential

- Single and twin rooms
- Private and shared bathrooms
- Self-catering
- Single en suite studios with kitchenettes available (18+)

Homestay

- Available across the San Diego area
- Guaranteed native or near-native English-speaking hosts
- Single and twin rooms
- Half-board (14 meals)

Study centre highlights:

- Roof-top terrace
- Wi-Fi enabled
- IT suite
- Interactive whiteboards
- Activities
- University counselling
- Excellent transport links
- Close to the beach

Courses:

- Intensive Programme
- Standard Programme
- Communication Skills (core)
- Exam Preparation: FCE and CAE (core); TOEFL (electives)
- Language Semester Abroad
- One-to-one lessons
- Vacation and Travel English

See more of our school online -
visit [embassyenglish.com/
san-diego](http://embassyenglish.com/san-diego)



The teachers have taught me so much in such a short time – that's the great thing about being here at Embassy. My class is such a mix of all different nationalities, when we're all together we all speak English.

Anna, Sweden

San Francisco

Bursting With Culture

San Francisco is one of the USA's most popular cities because of its breathtaking views, picturesque attractions, world-class food and unrivalled night life. Our study centre, located in the heart of downtown, is known for its warm and family-like atmosphere and is close to all of San Francisco's public transport.



Golden Gate Bridge



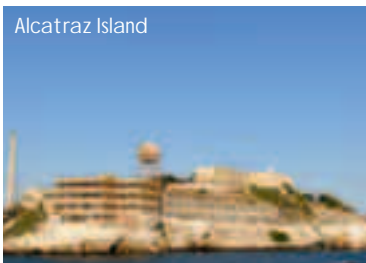
Palace of Fine Arts



Union Square



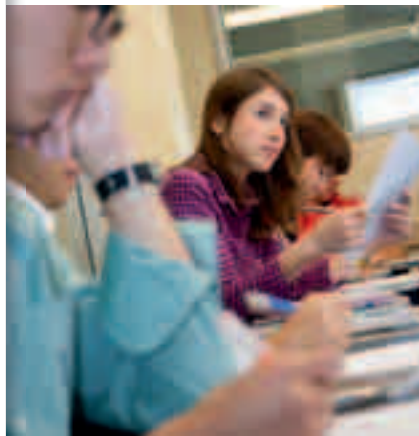
Lombard Street



Alcatraz Island



Cable car



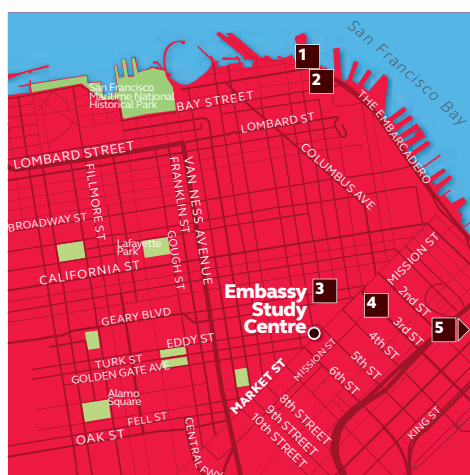
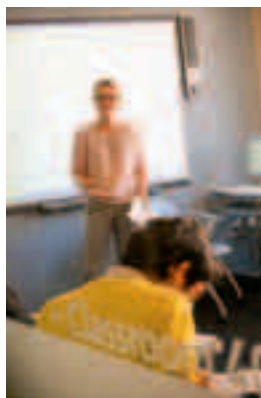
Free Wi-Fi
available at
this centre



Meet the Centre Director:



“There’s so much to see and do in one of the most beautiful cities in the world, San Francisco. Our study centre is right in the middle of the action, and our staff are looking forward to making your time here special and full of life long memories.”
John Lograsso, Centre Director



- 1 Fisherman's Wharf
- 2 North Beach – great Italian dining
- 3 Union Square – shopping district
- 4 The San Francisco Museum of Modern Art
- 5 AT&T Park – home of the Giants baseball team

Accommodation:

Residential

- Single and twin rooms
- En suite and shared bathrooms
- Half-board and self-catering

Homestay

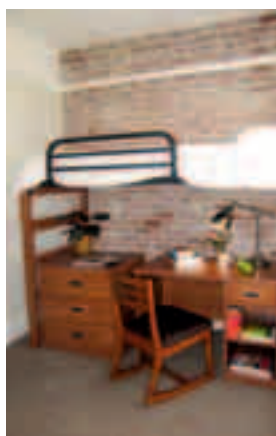
- Available across San Francisco
- Single and twin rooms
- Half-board (14 meals)

Study centre highlights:

- Central location
- Wi-Fi enabled
- IT suite
- Interactive whiteboards
- Student lounge
- University counselling
- Close to historic neighbourhoods

Courses:

- Intensive Programme
- Standard Programme
- Communication Skills (core)
- English in Action
- Exam Preparation: TOEFL
- Language Semester Abroad
- Vacation and Travel English
- One-to-one lessons

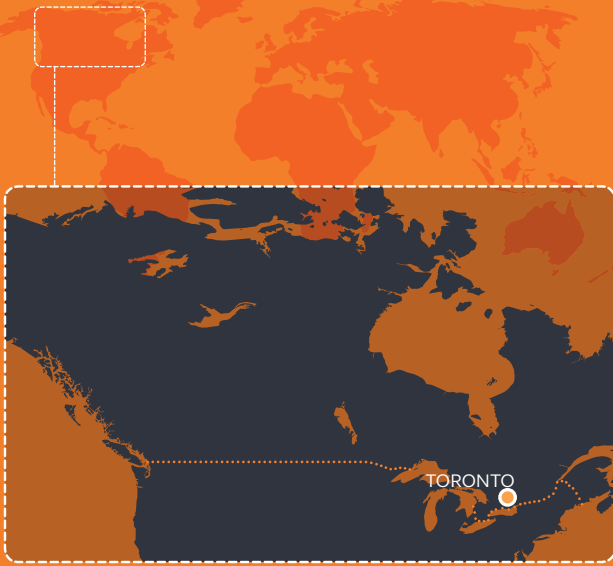


See more of our school online - visit
embassyenglish.com/san-francisco



The teachers at Embassy are the best I've ever had in my life. When I arrived I was nervous at first, but within two or three days the teachers made everyone feel at home, and feel comfortable. I will definitely recommend this school.

Diane, France



Canada

In addition to its stunning scenery and unsurpassed access to the great outdoors, Canada is culturally diverse, rich in history and has a reputation for its friendly citizens. The Embassy English study centre in Toronto is a great place to learn English while exploring all there is to see.



Toronto

Canada's Largest City



Our bright and modern study centre is on Bloor Street in the heart of Toronto's trendy shopping district. Learn and live English by exploring Toronto's major attractions, all within easy walking distance.

Free Wi-Fi
available at
this centre



Meet the Centre Director:



"I look forward to welcoming you to the Embassy Toronto Centre. Our well experienced staff are ready to help you reach your learning goals while Canada's largest and most diverse city will offer you so many new experiences. You will truly never forget your time with us."

Derek Sexton, Centre Director

Accommodation:

Homestay

- Available across the greater Toronto area
- Single rooms
- Half-board (14 meals)
- Full-board and breakfast-only options available on request

Study centre highlights:

- Wi-Fi enabled
- IT suite
- Interactive whiteboards
- Student lounge
- University counselling

Courses:

- Intensive Programme
- Standard Programme
- Communication Skills (core)
- English in Action
- English for Academic Purposes
- Exam Preparation: TOEFL (electives)
- TESL-YL
- J-SHINE
- Language Semester Abroad
- Power Speaking Programme



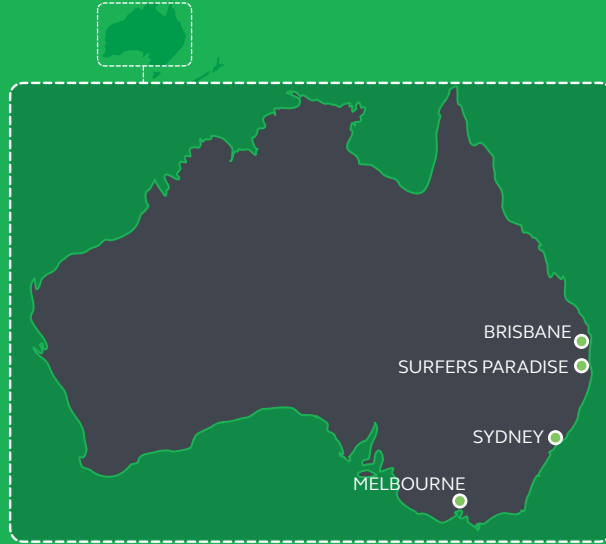
- 1 CN Tower
- 2 St. Lawrence Market
- 3 Rogers Stadium - home of the Blue Jays baseball team
- 4 Royal Ontario Museum
- 5 Kensington Market
- 6 Distillery District - history and entertainment precinct
- 7 Eaton Centre Shopping Mall



See more of our school online -
visit [embassyenglish.com/
toronto](http://embassyenglish.com/toronto)



Toronto is a beautiful city. You can explore the museum, the cultural centre and enjoy special events. I would like to live in Toronto, to find a job in Canada. Learning English with Embassy was a really good choice.
Samin, France



Australia

Stunning natural landscapes, a temperate climate, cosmopolitan cities and beautiful beaches make Australia a great choice for a complete academic programme or a short English language holiday. Get practical experience speaking English after class, and at work too. With a student visa, you can work up to 20 hours a week while you study.



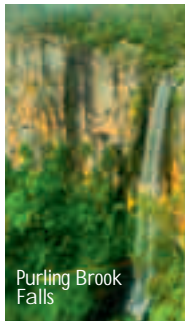
Brisbane

An Outdoor Urban Lifestyle

Enjoy **Brisbane's** cosmopolitan, laid back style as you study in our modern, purpose-built study centre. If a city surrounded by tropical plants, a sparkling river, modern architecture and plenty of free open space sounds like a campus you want to be a part of, then Embassy English in Brisbane is the place for you.



Botanical Gardens



Purling Brook Falls



Brisbane Chinatown



Springbrook National Park



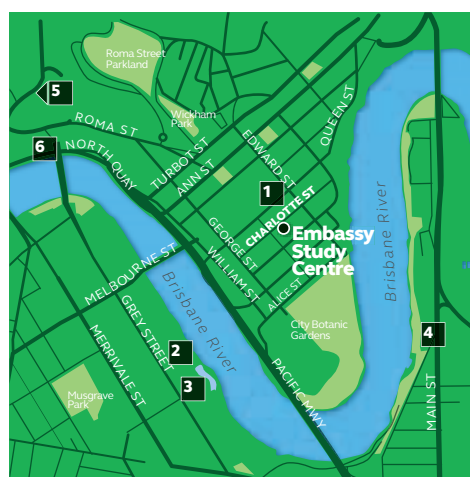
Brisbane skyline



Meet the **Centre Director**:

“No matter how much they’ve heard, our students are always amazed when they first see Brisbane. Under a beautiful blue sky, Brisbane is a green city with a relaxed optimistic outlook. Our residence is near parks, cafés, galleries and museums. Welcome!”
Bradley Muller, Centre Director

Free Wi-Fi
available at
this centre



- 1 Queen Street Mall
- 2 The Wheel of Brisbane
- 3 South Bank – visit the man-made beach
- 4 Kangaroo Point Cliffs
- 5 Mount Coot-tha - scenic views of Brisbane
- 6 CityCat River Trip

Accommodation:**Residential**

- Our residence is a short walk from the study centre, close to South Bank Parklands, public transport, cafés, museums, and galleries
- Single and twin rooms
- Shared bathrooms
- Half-board (breakfast and dinner Monday through Friday)
- Dining room and lounge
- Courtyard
- Laundry room

Homestay

- Available across the Brisbane area
- Single rooms
- Half-board (16 meals)

Study centre highlights:

- Wi-Fi enabled
- IT suite
- Interactive whiteboards
- Student lounge
- Activities
- University counselling
- Job placement assistance
- Purpose-built campus, shared with Martin College

Courses:

- General English (standard and intensive)
- Communication Skills (core)
- English for Academic Purposes
- Language Semester Abroad
- Exam Preparation: IELTS (core and electives)
- One-to-one lessons

See more of our school online - visit embassyenglish.com/brisbane



Teachers become the reason why you don't want to miss class. They make everything interesting and fun.
Valentin, Columbia

Melbourne

Style, Sport and Culture

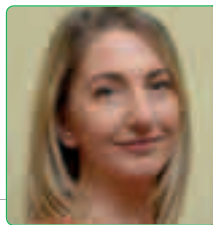
Learn and live English in our modern study centre overlooking Melbourne's beautiful skyline. You'll experience a vibrant variety of culture, music, cuisine, fashionable shops, sports and cosmopolitan style. Our bright, spacious classrooms are just a short walk from our comfortable and well-equipped residence.



Free Wi-Fi
available at
this centre



Meet the Centre Director:



“Melbourne’s a city filled with culture and fun. We’d love to introduce you to the benefits of studying English in one of the world’s most beautiful cities.”

Sharon Cox, Centre Director

Accommodation: Residential

- Single and double rooms
- En suite shower and toilet
- Flat screen TV, bar fridge, microwave, reverse cycle air conditioning and heating
- Self-catering
- 24-hour reception and security
- Internet access available at an additional charge
- Gym
- Swimming pool
- BBQ area
- Shared kitchen and laundry
- Free shuttle bus to the city

Homestay

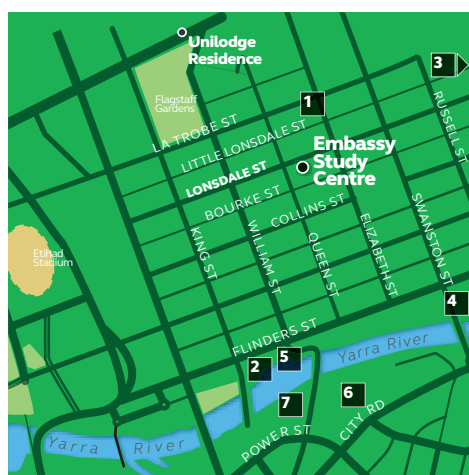
- Available across the Melbourne area
- Single rooms
- Half-board (16 meals)

Study centre highlights:

- Wi-Fi enabled
- IT suite
- Interactive whiteboards
- Student lounge
- Activities
- University counselling
- Work placement assistance seminars

Courses:

- General English (standard and intensive)
- Communication Skills (core)
- English for Academic Purposes
- Language Semester Abroad
- Exam Preparation: FCE and IELTS (core and electives)
- One-to-one lessons



- 1 Melbourne Shopping Centre
- 2 State Library
- 3 Parliament House
- 4 Federation Square
- 5 Melbourne Aquarium
- 6 Eureka Tower
- 7 Crown Entertainment Complex

See more of our school online -
visit [embassyenglish.com/
melbourne](http://embassyenglish.com/melbourne)

CRICOS Provider Name: Study Group Australia Pty Limited
CRICOS Provider Code: 01682E

embassyenglish.com

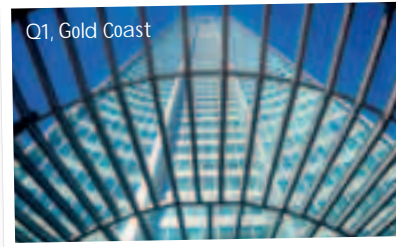


Melbourne is amazing. You always find something to do. My class is so close - we cook together, go shopping, watch movies, share all our free time. It's always fun.

Daniela, Colombia

Surfers Paradise

Work Hard, Play Hard



Our modern **Surfers Paradise** study centre on the Gold Coast, Australia's holiday playground, is only two streets away from the beach. Study in the morning and relax on the sand in the afternoon.

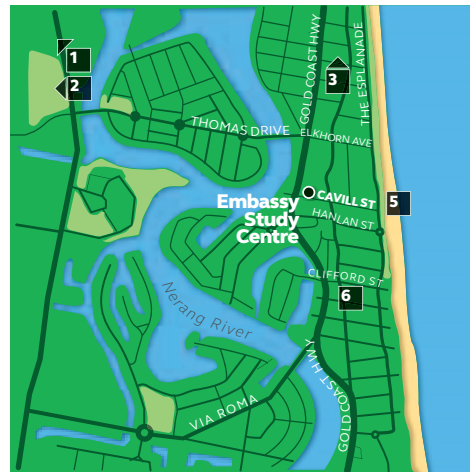
Free Wi-Fi
available at
this centre



Meet the Centre Director:



“One of the best beaches in the world is only minutes away from our modern campus. On the Gold Coast, we have the perfect balance between work and play!”
Bradley Muller, Centre Director



- 1 Dreamworld – an exciting theme park
- 2 Movie World
- 3 Sea World
- 4 Southport – scenic seaside destination
- 5 Surfers Paradise
- 6 Q1 – spectacular views from the world’s tallest residential tower

Accommodation: Residential

- A variety of accommodation is available at lodges
- Single and twin rooms
- Self-catering

Homestay

- Available across the Gold Coast area
- Single rooms
- Half-board (16 meals)

Study centre highlights:

- Wi-Fi enabled
- IT suite
- Library
- Interactive whiteboards
- Student lounge
- Activities, including English Plus Surfing
- University counselling
- Job advice workshops
- Shared campus with Martin College

Courses:

- General English (standard and intensive)
- Exam Preparation: IELTS (core and electives)
- One-to-one lessons
- English Plus Surfing: Enjoy professional surfing lessons after class

See more of our school online -
visit [embassyenglish.com/
surfers-paradise](http://embassyenglish.com/surfers-paradise)

CRICOS Provider Name: Study Group Australia Pty Limited
CRICOS Provider Code: 01682E

embassyenglish.com



I would really recommend this school – you meet people from around the world. Embassy has that phrase “friends for life” and it’s really true.
Patricia, Mexico

Sydney

Lively and Central



Sydney Harbour Bridge



Luna Park



Bondi Beach

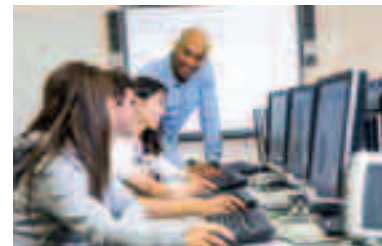


Sydney Opera House



Botanic Gardens

Go to classes on the coolest street in **Sydney**, Australia's largest city. The Embassy English study centre is in Darlinghurst, a lively central area packed with restaurants, shops, nightclubs, museums and parks. It is only a short distance to the city centre, where the most famous sights of Sydney are located, such as the Opera House, Harbour Bridge, Sydney Tower, and the Botanic Gardens.



Free Wi-Fi
available at
this centre



Meet the Centre Director:



“Come stay with us in Darlinghurst. Our centre is close to shopping, nightclubs and Hyde Park, a hot spot for parties and picnics. Take a day trip with us to the beautifully picturesque Blue Mountains.”

Richard Pincus, Centre Director

Accommodation:

Residential

- Single and twin rooms
- Shared bathrooms
- Self-catering

Homestay

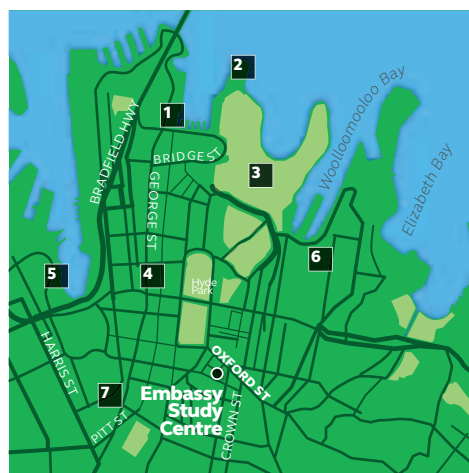
- Available across the greater Sydney area
- Single rooms
- Half-board (16 meals)
- Bed-and-breakfast option (age 18+)

Study centre highlights:

- Wi-Fi enabled
- IT suite
- Library
- Interactive whiteboards
- Student lounge
- Activities
- University counselling
- Work placement assistance seminars
- Shared campus with Charles Sturt University, and Martin College

Courses:

- General English (standard and intensive)
- Communication Skills (core)
- English for Academic Purposes
- Exam Preparation: FCE, CAE, IELTS (core, electives and intensive)
- Language Semester Abroad
- One-to-one lessons



- 1 The Rocks
- 2 Sydney Opera House
- 3 Botanical Gardens
- 4 Sydney Tower
- 5 Darling Harbour – bars and restaurants
- 6 Queen Victoria building
- 7 Chinatown

See more of our school online
- visit [embassyenglish.com/
sydney](http://embassyenglish.com/sydney)

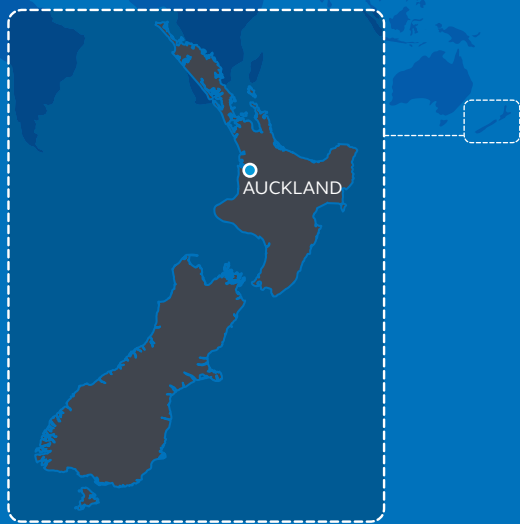
CRICOS Provider Name: Study Group Australia Pty Limited
CRICOS Provider Code: 01682E

embassyenglish.com



It was an amazing time. A lot of different people from different countries in the same class. The teachers are very helpful and the lessons are fun. I improved my English very fast.

Marco, Switzerland



New Zealand

New Zealand is a country whose landscape needs no introduction. World famous for incredible scenery and a wealth of year-round outdoor sports, studying in New Zealand is about more than being in the classroom. People are friendly and easy-going and welcome students from around the world to their wonderful country every year.



Auckland

Laid Back Countryside



Karekare Beach on Auckland's west coast



Auckland Museum



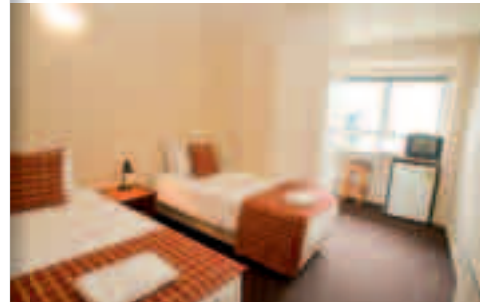
Piha Beach



Auckland Skytower



Auckland Skyline from Mount Eden



Learning English in our modern **Auckland** study centre means you'll be close to the waterfront, near its vibrant nightlife and living amongst the city's melting pot of cultures.

Free Wi-Fi
available at
this centre

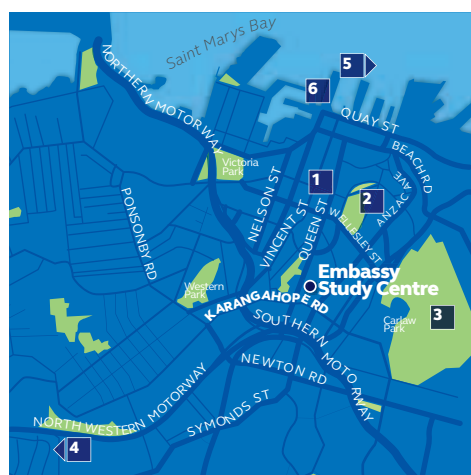


Meet the Centre Director:



“Auckland offers beautiful countryside, a relaxed lifestyle and lots of activities. We’re looking forward to showing you around.”

Lindsay Spedding, Centre Director



- 1 Sky Tower
- 2 University of Auckland
- 3 Auckland War Memorial Museum
- 4 Piha Beach
- 5 Waiheke Island
- 6 Voyager New Zealand Maritime Museum

Accommodation: Residential

- A variety of accommodation is available at lodges
- Single and shared rooms
- Self-catering

Homestay

- Available across the Auckland area
- Single rooms
- Half-board (16 meals)

Study centre highlights:

- Wi-Fi enabled
- IT suite
- Interactive whiteboards
- Student lounge
- Activities
- University counselling
- Library
- Shared campus with Taylors College

Courses:

- Intensive Programme
- Standard Programme
- Exam Preparation: FCE (elective) and IELTS (core)
- One-to-one lessons

See more of our school online -
visit [embassyenglish.com/
auckland](http://embassyenglish.com/auckland)



I would definitely recommend the school as it is a great environment to study English in. The teachers are all extremely dedicated and care about their students and their results.

Lisa, The Netherlands

Terms and Conditions

1. Payment of Fees

Fees must be paid before visa documents are issued and no later than 14 days before arrival.

In Australia, students with multiple study periods must pay the total due on enrolment before visa documents are issued and no later than 14 days before arrival. Subsequent instalment payments must be received in accordance with the due dates stated on the invoice.

In California, students with programmes more than 16 weeks in duration may elect to pay in full or to pay tuition in instalments. Students choosing to pay in instalments must pay the total due on enrolment before visa documents are issued and no later than 14 days before arrival. Subsequent instalment payments may be received in accordance with the due dates stated on the invoice. Instalment due dates for each course are determined according to the length of the programme. Instalments will be no more than the equivalent of 16 weeks' worth of the programme tuition until the programme duration midpoint, when any outstanding balance must be received in full.

Transfer and accommodation documents will be released 14 days prior to arrival once payment has been received in full (where applicable). For all late payments made after the due date, a fee of 2% of the payment amount will be added.

2. Services

The company reserves the right to change details of its services, including courses, facilities, accommodation and course dates, where circumstances beyond the company's control necessitate such changes or where the number of enrolments is not enough to operate a course viably.

3. Course Entry Levels

Most courses require minimum levels of English for entry. If after the placement test, a student is found to be below the minimum level required to start the course, the school reserves the right to place the student in a class appropriate to the student's language level and/or a different curriculum. Where this results in extending the duration of a student's course, Embassy may need to issue a new Certificate of Enrolment. Students may be transferred to the nearest centre running a lower level course.

4. Changes to Enrolments

The company reserves the right to charge an Administration Fee (GBP50; USD80; CAD80; AUD80; NZD90) each time course or accommodation details are changed or cancelled after a place has been confirmed. Additionally, when a change request for a previously confirmed accommodation is received less than 7 days in advance of the scheduled arrival date, an equivalent week's accommodation penalty fee will be charged. These fees will not apply to upgraded or extended courses.

5. Changes to Airport Transfers

Notification of change to airport transfers must be sent to our International Admissions Centre at least 2 full working days prior to the designated arrival time. If notice is not received the company cannot be held liable for operational errors, and an additional Administration Fee will apply.

6. Accommodation and Travel details

Students that have booked Embassy accommodation will receive details upon receipt of payment and travel information and no more than 14 days prior to arrival. If travel information is received less than 2 working days prior to the scheduled arrival date then the company may not be in a position to provide the transfer or accommodation service for the weekend of arrival.

7. Accident and Medical Insurance

Every student must have appropriate insurance and provide a document with the student's name and date of coverage as proof. The company recommends that all students take our own StudyCare insurance which is tailored to the needs of international students. Cover under the StudyCare insurance policy does not commence until the insurance fees have been paid in full. StudyCare is not available to students within Australia.

In the USA, Canada, the UK, and New Zealand, students not wishing to take StudyCare must present an equivalent insurance certificate on arrival. Students without insurance must take StudyCare. In the USA, StudyCare is mandatory for students taking English in Action. In Canada, StudyCare is mandatory for students taking the International Internship Programme and the Work Placement programme.

In New Zealand, having appropriate and current medical and travel insurance is compulsory for all international students. This is a requirement of the New Zealand Ministry of Education under the Code of Practice for the Pastoral Care of International Students, found on their website at www.minedu.govt.nz/goto/international.

- Students without adequate insurance or sufficient evidence of insurance will have StudyCare Insurance added to their programme invoice.
- Students may purchase international insurance from their home country as long as it covers the minimum prescribed insurance requirements as detailed in the Code of Practice. Students must provide the school with a translated copy for verification purposes prior to arrival.
- Most international students are not entitled to publicly funded health services while in New Zealand. If a student receives medical treatment during a visit, they will be liable for the full costs of that treatment. Full details on entitlements to publicly funded health services are available through the Ministry of Health, and can be viewed on their website at www.moh.govt.nz.
- The Accident Compensation Corporation (ACC) provides accident insurance for all New Zealand citizens, residents and temporary visitors to New Zealand, but a student may still be liable for all other medical and related costs. Further information can be viewed on the ACC website at www.acc.co.nz.

In Australia, it is compulsory for those on Student Visas to take Overseas Student Health Cover (OSHC) for the duration of the time they are in Australia. Students need to buy OSHC before coming to Australia, to cover them from when they arrive. This ensures they have adequate health care arrangements while studying in Australia. If the student chooses for Embassy to arrange OSHC for the first course/year only of their programme, it is their responsibility to either extend or take out OSHC for the rest of their time in Australia. They must provide evidence of cover for the entire study period before a Confirmation of Enrolment will be issued. There will be no refund of StudyCare Insurance post-arrival.

8. General Refund Policy

All refunds will be sent to the account of the Embassy representative to whom the fees were originally paid, or to the individual from whom Embassy has received the original direct payment, except in New Zealand where the refund will be paid directly to the student.

If a student's visa application is rejected after payment has been received all fees, excluding any cancellation fees detailed in the Cancellation Policy below, will be refunded within 28 days, provided a visa refusal letter is received by our International Admissions Centre at least 2 working days before the course is due to start and the student has fulfilled all requirements for a visa application. Students in San Diego, Los Angeles and San Francisco must sign a California State Enrolment & Refund Agreement form. Refunds will be processed according to these terms and conditions.

Australia

In Australia this agreement, and the availability of complaints and appeals processes, does not remove the right of the student to take action under Australia's consumer protection laws. Refunds will be provided to students within 28 days if the student defaults based on a visa denial provided the International Admissions Centre receives the visa denial letter.

If the school defaults, the student is eligible to receive a refund of the unexpended pre-paid tuition fees which the student has paid to the school. The refund amount will be based on the portion of tuition for which the student has paid but for which tuition has not yet been received.

In the unlikely event that the school is unable to deliver a course in full, the student will be offered the refund amount in accordance with the above paragraph. The refund will be paid within 14 days of the day on which the course ceased being provided. Alternatively, the student may be offered enrolment in a suitable alternative course by the school at no extra cost.

The student has the right to choose whether they would prefer a full refund of course fees, or to accept a place on another course. If they choose placement on another course, Embassy will ask them to sign a document to indicate acceptance of the placement. If the school is unable to provide a refund or to place the student on an alternative course the Australian government's Tuition Protection Scheme's (TPS) director will provide access to a suitable alternative course.

9. Cancellation Policy

Embassy defines cancellation as the period prior to start of first course. All cancellations must be made in writing to our International Admissions Centre and the following refund policies apply: Enrolment Fee, Courier Fee, Accommodation Placement Fee, or Administration Fee will not be refunded for any student cancelling their course before arrival.

10. Tuition Refunds before Arrival UK, USA and Canada

Where cancellations are received in writing more than 14 days before the first course start date 100% of tuition fees will be refunded, but any courier fee, enrolment fee, UK Visa application fee (CAS) and added administration fees are non-refundable. Where cancellations are received in writing 14 days or less prior to the first course start date students will be charged GBP250 (UK), USD350 (USA) or CAD350 (Canada), in addition to the fees listed in this paragraph.

Australia

Students will be charged the Enrolment Fee plus 30% of total tuition fees, as well as all other sundry fees if cancelling prior to the start of their course.

New Zealand

In New Zealand, students will be refunded tuition fees in full, less the Enrolment Fee.

Accommodation Refunds before Arrival

- Students cancelling their accommodation less than 14 days before arrival will be charged an amount equal to 1 week of accommodation.
- For cancellations less than 48 hours before arrival, an amount equivalent to 4 weeks of accommodation will be charged, or the full accommodation fee if the booking is less than 4 weeks in duration.

11. Withdrawal Policy

Embassy defines withdrawal as termination of a course after the first course has started. Any withdrawal must be made in writing to the centre director of the school where the student is studying.

Enrolment Fee, Courier Fee, Accommodation Placement Fee, and StudyCare or OHSC premium will not be refunded for any student terminating their course after arrival.

Tuition Refunds after Arrival

Written notification of withdrawal must be provided as a condition for making refunds. If a student breaches the visa conditions, no refund of the semester fees will be made.

USA

Refunds are calculated from the last date of attendance.

- For courses of 4 weeks or less, no refund will apply.
- For courses longer than 4 weeks, students who terminate in the first 4 weeks will be refunded all tuition fees except for 4 weeks calculated at the non-discounted (Certificate of English) rate.
- For courses longer than 4 weeks, students whose withdrawal occurs after the first 4 weeks but before the midpoint of their course, Embassy will retain a pro-rated amount of tuition at the non-discounted (Certificate of English) rate.
- For students whose withdrawal occurs after the midpoint, Embassy will retain all tuition fees.

UK, Canada and Australia

No tuition fees will be refunded to students who notify the centre of their withdrawal after the commencement of their first course. When a student has enrolled in multiple locations/courses, the course start date for the purpose of this clause is that of the initial Embassy course.

New Zealand

- a) For courses of 1 to 34 days duration, if the student withdraws within the first 2 days of the course, they will receive 50% of the total fees paid. If they withdraw after the first 2 days, no refund is made.
- b) For courses of 35 days to 3 months duration, if the student withdraws within the first 5 days of the course, they will receive 75% of the total fees paid. If they withdraw after the first 5 days, no refund is made.
- c) For courses greater than 3 months, if written notice of termination is received by the end of the eighth day of the course, a termination fee of the lesser of NZD500 or 10% of tuition will apply. Students terminating after this period will not receive a refund.

Accommodation Refunds after Arrival

- a) Students leaving their accommodation must give at least 4 weeks of notice in writing. After deducting the price of accommodation used, including the required notice period charged at the standard accommodation rate, accommodation fees in excess of the accommodation period will then be refunded, less the administration fee.
- b) In Australia and New Zealand, a 10% withdrawal fee will be deducted from the balance.

12. Visas

Students should contact their local embassy, Consulate or High Commission to ensure they are allowed to enter and study in their chosen country. If a student does not possess or maintain a valid visa status in accordance with the visa conditions then their course will be terminated without refund.

For students wishing to study in the USA, Embassy is authorised under Federal Law to enrol non-immigrant students. By law, to issue the I-20 form, with the Enrolment Form, we must receive:

- a) the student's home address
 - b) proof of sufficient funds to meet tuition and living expenses such as a current bank statement or a letter from your bank
 - c) a letter or notarised affidavit guaranteeing support from your parent or employer or sponsor
- No visa support documentation will be provided until all fees have been received.

13. Holidays

(Public and Language Semester Abroad)
Schools will be closed on public holidays and no compensation is provided for missed days due to public holidays. All students in the USA and UK in Homestay accommodation over the Christmas and New Year 2 week period will be charged a seasonal supplement of GBP50 (UK) or USD100 (USA) per week. Dates for Language Year Abroad include the following vacation periods between terms:
2015: 21-29 March; 13-28 June; 12-20 September.

14. Resolution of Disputes

In the event of a dispute between an individual student and the school, procedures are in place to facilitate the resolution of the dispute. Any complaint should first be made to the student's Embassy Centre Director. Each complaint will be fully investigated provided that it is received within a month of the course ending and all fees have been paid. If the matter is not resolved, the student should communicate in writing to the local Embassy Head Office (see back cover).

In Australia, students may lodge an external appeal or complain about this decision through the Overseas Students Ombudsman. The Overseas Students Ombudsman offers a free and independent service for overseas students who have a complaint or want to lodge an external appeal about a decision made by their private education or training provider. See the Overseas Students Ombudsman website www.oso.gov.au or phone 1300 362 072 for more information. In California, a student may file a complaint with the Bureau for Private Postsecondary Education by calling 1 888 370 7589 or by completing a complaint form, which can be obtained on the bureau's internet website, bppe.ca.gov.

15. Liability

Embassy and its staff and representatives will not be liable for loss, damage or injury to persons or property howsoever caused, except where liability is expressly imposed by law. Embassy will not be liable in the event that any service contracted to be supplied by Embassy becomes impossible to supply for any reason or any cause outside the control of Embassy.

16. Valid Prices

Prices are valid for courses beginning from 1 January 2015. Prices are subject to change without notice and will only be confirmed upon invoicing. For current prices please refer to embassyenglish.com. Agents should refer to the Partners website: studygroup.com/partners.

17. Expulsion

Embassy reserves the right to expel or evict from accommodations and courses arranged by Embassy any student whose conduct is unsatisfactory at the discretion of the centre director. In UK, USA, Canada and NZ that decision is final. No fees will be refunded in such cases and any unpaid fees become payable immediately. In Australia, a student has the right to appeal against such a decision and details of that process are available from the school. Students and their parents or guardians, where applicable, agree to pay the tuition fees and other charges applicable for the course on the due dates. It is understood and agreed that failure to do this may result in suspension from the programme and cancellation of the enrolment.

18. Promotional Activity

The student (and, where applicable, his or her parent or guardian):

- (a) agrees that the student's photographs, videos, artwork or other works, as well as recorded or written testimonials and details of the student's achievements (hereto referred to as "Student Images and Testimonials") may be used by Embassy and its parent company Study Group, or by a third party agent of Study Group, worldwide for promotional purposes including in its printed and online marketing materials and on any social media network without further consent or notification; and
- (b) gives consent to Embassy and to its parent company Study Group storing, or transferring across international borders, copies of the Student Images and Testimonials for such purposes.

19. Data Protection

Any information provided to Embassy may be held on computer and shall be used in accordance with its data protection registration and the national data protection laws applicable. Our Privacy Policy is available on the Embassy website.

20. Further Information: Australia

- a) ESOS framework: The Australian Government wants overseas students in Australia to have a safe, enjoyable and rewarding place to study. Australia's laws promote quality education and consumer protection for overseas students. These laws are known as the ESOS Framework and they include the Education Services for Overseas Students (ESOS) Act 2000 and the National Code. Visit the website http://aei.gov.au/AEI/ESOS/QuickInfo/ESOS_FrameWork_pdf.pdf for details. A student who has concerns about any of these matters after arrival at Embassy, should contact the Centre Director.
- b) Information provided may be made available to Commonwealth and State agencies and the Fund Manager of the ESOS Assurance Fund, as part of our obligations under the ESOS Act 2000 and the National Code.
- c) Each student must notify the campus of any change in their contact details or address while enrolled in the course.
- d) All courses offering fewer than 24 lessons (20 hours) per week are not available to student visa holders.
- e) CRICOS Provider Name: Study Group Australia Pty Limited
CRICOS Provider Code: 01682E
- f) Any school-aged dependants accompanying overseas students to Australia will be required to pay full fees if they are enrolled in either a government or non-government school.

- g) Students studying in Queensland who are concerned about the conduct of a provider may contact officers of the Queensland Department of Education; the Chief Executive of that Department has power under the Education (Overseas Students) Act to suspend or cancel the registration of a provider or a course within that state.

h) Average living expenses
Australia: AUD18,610 per year
New Zealand: NZD18,000

21. Further Information: New Zealand

- a) Protection of Student Fees: Fees paid by students will be fully protected by a Bank Guarantee and cash held by an independent Trustee. In the unlikely event of the school closing prior to the conclusion of courses, school fees will be refunded on a pro-rata basis by the Trustee.
- b) If students experience difficulty with procedures in New Zealand, they may contact the Qualifications Authority at PO Box 160, Wellington. Telephone +64 4 802 3000.
- c) Code of Practice: Embassy has agreed to observe and be bound by the Code of Practice for the Pastoral Care of International Students published by the Minister of Education. Copies of the Code are available on request from this institution or from the New Zealand Ministry of Education website www.minedu.govt.nz. The Code of Practice also establishes that International Educational Appeal Authority (IEAA) and the Review Panel receive and adjudicate on student complaints. Their email address is: info.ieaa@minedu.govt.nz.
- d) Immigration: Full details of visa and permit requirements, advice on rights to employment in New Zealand while studying, and reporting requirements are available through the New Zealand Immigration Service, and can be viewed on their website at immigration.govt.nz.
- e) Each student must notify the school of any change to their contact details, accommodation type, and residential address.

22. Further information: USA

For students travelling as unaccompanied minors on flights to and from the USA, a one-way USD200 unaccompanied minor airport service fee will be charged. Pocket money requests will incur a processing charge of USD80.

23. Further information: UK

Embassy English (Brighton, Cambridge, London, Oxford) is registered with the UKBA register of sponsors and its sponsor licence number is BV1P5MAW1. This empowers Embassy English to issue Confirmation of Acceptance of Studies (CAS) at its discretion. Pocket money requests will incur a processing charge of GBP50.

Courses with Standard 20 classes total 16 hours and 40-minutes of tuition per week, and with Intensive 28 total 23 hours and 20-minutes of tuition per week.

24. Force Majeure

Embassy is not liable in the event where it is unable to fulfil any service to which it is contractually bound because of fire, natural disaster, acts of government, failure of suppliers or subcontractors, labour disputes or other reasons which are outside its control.

25. Agents

All the above terms are applicable to direct students and agents unless variations are expressly agreed between the agent and Embassy or their parent company, Study Group, in writing.

26. Visit

<http://www.embassyenglish.com/global/terms-and-conditions> for any updates to these Terms & Conditions.

Do More With Embassy...



Embassy Pathways

Your pathway to university success without having to take an IELTS or TOEFL examination.

Choose from over 70 institutions worldwide.

This Embassy Pathway course is for students intending to pursue university and further education courses in the USA, Canada, the UK or Australia. Successful completion of this course guarantees entry into one of our university or educational partner institutions. Course length: 10, 20, 30 or 40 weeks.

Entry requirements:

- High school completion and successful conditional acceptance of academic qualifications.
- Stage 1 B1+ equivalent to IELTS 4.5 / TOEFL 30
- Stage 2 B2 equivalent to IELTS 5.0 / TOEFL 35
- Stage 3 B2+ equivalent to IELTS 5.5 / TOEFL 46
- Stage 4 C1 equivalent to IELTS 6.0 / TOEFL 60.

Read more at embassypathways.com



Embassy Summer

A summer to remember... Whether you want to stroll through a buzzing coastal city, surf some excellent waves, photograph stunning scenery or simply chill out in the sun, we have just the summer experience for you.

Embassy Summer programmes are designed to make the most of their location so that you can get the summer experience you want.

Programmes and locations

Embassy Summer has programmes and locations that offer something for everyone...

- **Amazing facilities** throughout all of our locations
- **Fantastic locations** in the UK, USA, and Australia
- Juniors, Groups and individuals
- **All levels** from Beginner to Advanced
- Accommodation in college residences or homestay
- Full and exciting activity programmes

Read more at embassysummer.com





Embassy Academy

Embassy Academy is for young learners aged 8 to 17, offering the perfect multinational environment for English language development.

The Embassy Academy experience.

- A summer school programme tailored to each child
- Learn English with friendly, highly qualified native-speaking teachers
- Stimulating afternoon courses with professionally qualified teachers
- Excursions and trips on three days each week
- Live in a traditional countryside boarding school
- An excellent student mix (maximum 20% of any one nationality)
- A staff to student ratio of 1:5 providing lots of individual attention

The welfare of children at all of our schools is our most important consideration. We are “in loco parentis” and apply the same standards of care and safety that any parent would expect. Our staff are selected with these skills and attributes in mind.

Read more at embassyacademy.com



Embassy StudyTours

With Embassy StudyTours, students from around the world can take short courses in English and experience a new culture and lifestyle in a choice of 18 schools across three continents.

Groups can choose to create specific programmes and select accommodation so that they have exactly the type of experience they want. Take a break with Embassy StudyTours and discover what the world has to offer.

- 20 lessons per week with standard or intensive programmes available
- Minimum group size: 15
- Age ranges: 10+
- Accommodation: full or half-board, host families or residential

UK: Brighton, Cambridge, Chalfont St Giles, Hastings, London, Oxford and Seaford

USA: Boston, Fort Lauderdale, LA Long Beach, New York, San Diego and San Francisco

Australia: Brisbane, Melbourne, Surfers Paradise and Sydney

Canada: Toronto

Read more at embassystudy.com



Practical Information

Embassy support

Before you leave home we'll give you all the information you need about your travel, study and accommodation arrangements. We'll meet you at the airport and take you to your accommodation (for an additional transfer fee). We'll give you an Embassy handbook on your first day, containing all of the information you need. If you have any questions, our student services team will be on hand to help throughout your studies. We'll give you a telephone number to contact us in an emergency, 24 hours a day.

Payment

If you're enrolling through a local representative, please make payment to them. If enrolling directly, please pay by direct bank transfer or credit card to Embassy. All bookings are subject to our Terms and Conditions. You'll find details on the enrolment form and on embassyenglish.com.

StudyCare insurance (UK, USA, Canada and New Zealand)

This is a comprehensive insurance plan specially created for international students. It will give you full protection from the day you travel. Full details are in the StudyCare insurance booklet, or online at embassyenglish.com/studycare

Overseas Student Health Cover (Australia)

As an international student on a student visa you are required to have Overseas Student Health Cover for the duration of your visa. It is important that your cover is maintained for the duration of your programme/s. A full list of prices is available online at embassyenglish.com.

Confirming enrolment

We will confirm your enrolment by email, to you or your local representative.

To enrol with Embassy

Contact your nearest Embassy representative or enrol directly online at embassyenglish.com. If this brochure hasn't provided the information you need, please contact our International Admissions Centre in the relevant country. See the opposite page for contact details.

Embassy Centre Holiday Dates

	UK	US	CANADA	AUSTRALIA				NEW ZEALAND
				Brisbane	Melbourne	Surfers Paradise	Sydney	Auckland
January	Jan 1st	Jan 1st, 19th	Jan 1st	Jan 1st, 26th	Jan 1st, 26th	Jan 1st, 26th	Jan 1st, 26th	Jan 1st, 2nd
February		Feb 16th	Feb 16th					Feb 6th
March					Mar 9th			
April	Apr 3rd, 6th		Apr 3rd	Apr 3rd, 6th	Apr 3rd, 6th	Apr 3rd, 6th	Apr 3rd, 6th	Apr 3rd, 6th, 27th
May	May 4th, 25th		May 18th					
June				Jun 8th	Jun 8th	Jun 8th	Jun 8th	Jun 1st
July		Jul 3rd	Jul 1st					
August	Aug 31st		Aug 3rd	Aug 12th				
September		Sept 7th	Sept 7th					
October		Oct 12th	Oct 12th	Oct 5th		Oct 5th		Oct 26th
November		Nov 26th, 27th			Nov 3rd			
December	Dec 18th-31st	Dec 25th	Dec 25th-26th	Dec 21st-28th	Dec 21st-28th	Dec 21st-28th	Dec 21st-28th	Dec 21st - Jan 3rd 2016



Contact

United Kingdom – International Admissions Centre
1 Billinton Way, Brighton BN1 4LF, United Kingdom
T +44 1273 339 400 F +44 1273 339 401

United States – International Admissions Centre
41 West Street, Level 1, Boston, MA 02111
T +1 857 362 8980 F +1 857 362 7336

Canada – International Admissions Centre
80 Bloor Street West, 9th Floor
Toronto, Ontario M5S 2V1
T +1 416 413 0511

Australia/New Zealand – International Admissions Centre
Level 8, 97-99 Bathurst Street, Sydney, NSW 2000
T +61 2 8263 1888 F +61 2 9267 0531

Agents
studygroup.com/partners

Students
embassyenglish.com



Embassy English is part of Study Group.

Study Group prepares students for life in a global society and success in a global economy.

We educate students from every corner of the globe enabling them to realise their potential through a transformational learning experience.

Visit
studygroup.com



Building Futures is Study Group's non-profit initiative that provides educational opportunities in the developing world.

Visit
studygroup.com/buildingfutures



New Zealand Qualification Authority



Please recycle this brochure after use.