



SYDNEY COLLEGE
OF ENGLISH



Welcome to Sydney College of English

Sydney College of English (SCE) has been internationally recognised as a top quality independent school for over twenty five years. As a foundation member of English Australia and NEAS, our mission has always been to provide the most productive, informative and fun learning experience for our students.

We offer a diverse range of NEAS accredited courses in a flexible format. Our courses offer a number of entry and exit points from beginner to advanced levels, and range from General English, English for Academic Purposes, English for Specific Purposes (English for Health Professionals, Preparation Course for OET, and Business English) and Examination Preparation Courses (Cambridge Preparation Courses and IELTS Preparation). With numerous articulation partners, (Universities, TAFE NSW, and high Schools) and every opportunity to migrate between areas of study, SCE makes it possible for students to achieve real goals specific to their individual needs.

We also take special care to ensure that life beyond the classroom is always comfortable and exciting. We offer airport meeting services, high quality homestay or student residences, regular social activities, a vibrant mix of students from over 30 countries and a dedicated student services team who are always happy to assist students with any enquires or concerns.

Whether it is in academic, business or social contexts, our aim is to assist our students in pursuit of their life-long careers, while also encouraging lasting cross cultural friendships and an unforgettable experience of the Sydney lifestyle.



Proudly Accredited by:



Life in Sydney

Here at the Sydney College of English, we believe that Sydney is Australia's most diverse and beautiful city. Here you can study English in a relaxing, vibrant environment, and make friends from all over the world at the same time! Studying here gives you all the excitement of city life and all the natural beauty of the surrounding mountains, beaches and countryside too.

As well as studying a new language, we want you to experience new things and have lots of adventures during your time in Sydney. The staff and teachers here at Sydney College of English are very knowledgeable and are always ready to make sure you have an unforgettable time during your studies in Australia. With our impressive array of English courses to choose from, fantastic social activities, and a very vibrant cultural scene, you will be so glad you chose to spend time in Sydney with us!

Convenient Location

Sydney College of English is located in the heart of one of the world's most beautiful cities. Sydney is characterised by a beautiful and unique coastline in the east, a stunning mountain range to the west and the world famous Sydney Harbour at its core. Within the city itself there is an endless list of things to see and do which means whether you are learning to surf on the famous Bondi Beach, exploring the forest at the Royal National Park in Sydney's South or experiencing the breathtaking view from the top of the Harbour Bridge, you will never have a dull moment during your time in Sydney.

The school is located within walking distance of Sydney Central Station and main bus routes. We are situated in the centre of the lively student district close to the University of Sydney, UTS and TAFE. Darling Harbour, Chinatown and the city centre are all only minutes away.

Family Homestay

At SCE we want you to feel safe and welcome from the moment you arrive in Australia and provide you with opportunities to use English as much as possible. One way of achieving this is by choosing to live with a family during your time in Sydney.

This will help you to meet some wonderful people and get a better understanding of the Australian way of life. All homestays are personally inspected before they can join the programme. They must guarantee that they will provide a high standard of accommodation and facilities and be friendly and willing to look after you.

Social Activities Programme

At SCE we want you to enjoy every minute of your experience here in Sydney which is why we will help you to discover the best of what's on offer in Sydney during your time here. Every month we have a new and exciting calendar of in-college activities so whether you'd like to play soccer, practise your English in our English Conversation Clubs, meet other new students at our weekly 'Welcome Drinks' or go for a walk along one of our beautiful beaches, we've got something fun for you to do.

Being a student at SCE also guarantees that you will receive offers and discounts at lots of the best local bars and student events around Sydney. We can also organise trips for you and other students to visit some of the key attractions in and around Sydney such as the beautiful Blue Mountains, the iconic Sydney Harbour and our national capital. At student services we are always happy to give you information on the latest events happening such as free festivals and concerts or must-see tourist spots.

Airport Meeting Service

If you prefer to be met by a big welcoming smile, we are happy to arrange for someone to meet you at the airport and take you to your accommodation on your arrival in Sydney.

The Hostel or Student Residence Option

We offer a wide variety of accommodation in hostels or student residences in Sydney. Please ask us for further details. We can also help you to find apartment accommodation after you arrive in Australia. Our student noticeboard usually has a number of apartment sharing options.



Why Study at SCE?

Internationally Respected College

Since its inception in 1987, SCE has always held an international reputation with students, agents and other language school providers. Our international reputation is also recognized by IALC (www.ialc.org), and nationally we are one of the first NEAS accredited schools in Australia (www.neas.org.au), as well as a foundation member of English Australia.

Location

SCE is located in one of the most convenient places in Sydney. We are in close proximity to three prestigious Universities in Sydney: Sydney University, University of Technology, and Notre Dame University. They are all within 5–8 minutes walking distance from the college. We are also very close to the TAFE NSW Ultimo Campus, a huge shopping centre, bus stops and many cafes.

Excellent Facilities

SCE's facilities include 33 bright air-conditioned classrooms, separate lounge areas for relaxing between classes, counselling area with academic and social information, free wireless access to the internet, 2 Computer laboratories, student Study Centre, and listening lab facilities.

Conversation Club with the University of Sydney Students

The Weekly English Conversation Club helps our students practise English with students from the University of Sydney. This is a great way to learn casual English.

Examination Classes

Our large range of Cambridge Exam and IELTS Preparation courses has consistently produced high levels of success for our students.

Cambridge Open Exams Centre

SCE is an open testing Centre for Cambridge Exams. We offer more flexible options for exams to be taken throughout the year.

Nationality Mix

One of the biggest features of SCE is the large mix of nationalities from over 30 different countries. This helps students establish friendships and assists them in speaking English as a means of communication between different cultural groups.

Small Class Size

The class average is approximately 12 students. This gives students the best opportunity to learn, as teachers can give more attention to students' needs.

Highly Qualified Teaching Staff and Teaching Materials

The staff at SCE are employed because of their qualifications, experience and dedication to teaching. Both these factors make our teachers the best qualified to assist student learning. Constantly undergoing on-going training, they are the best in the industry. The latest in teaching materials is used to help students learn English in various modes of study of the language.

Professional and Friendly Staff and Activities

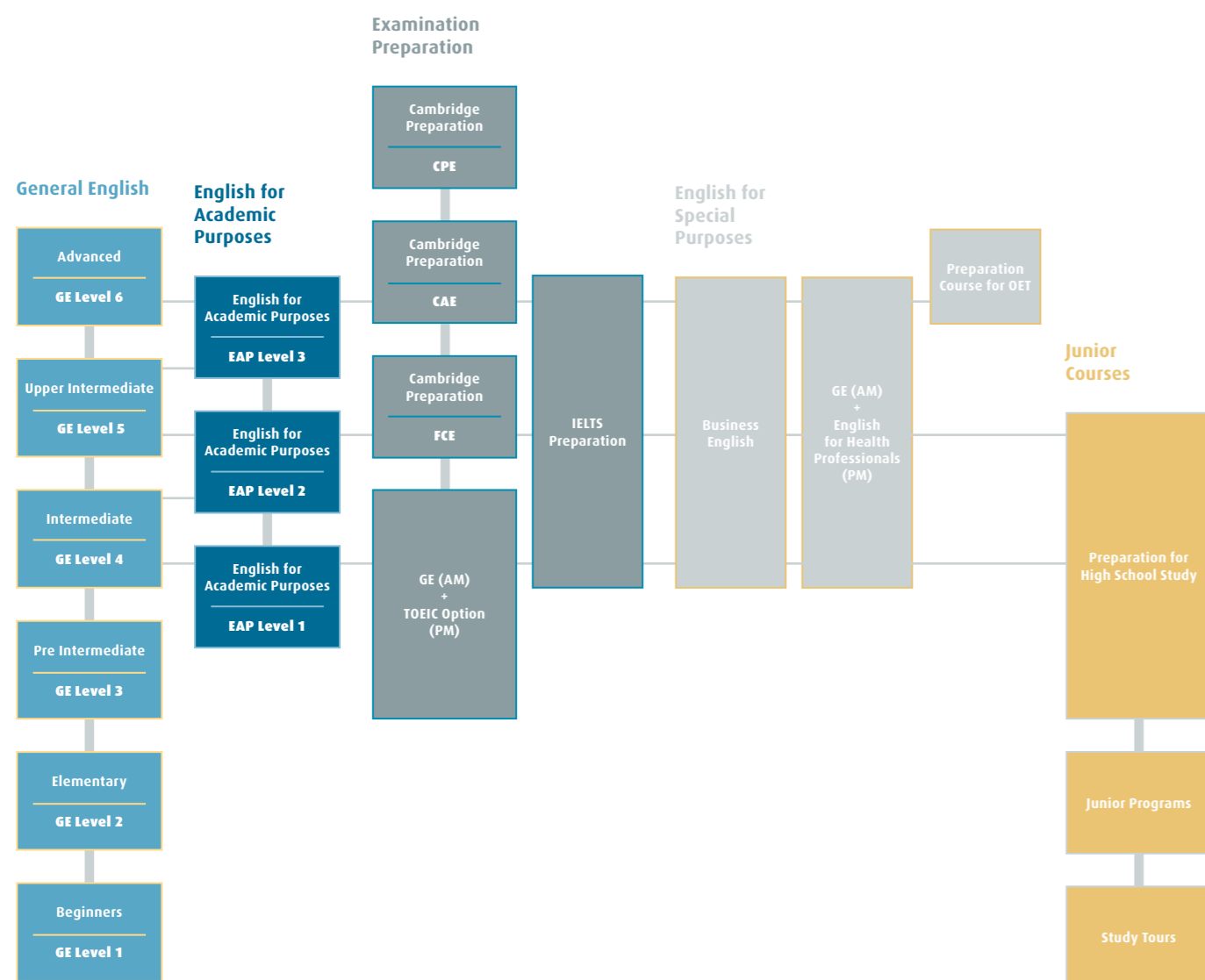
A dedicated group of administrative staff are always on hand to help with every issue for students living in a foreign country like Australia. Daily, weekly and special activities are organised for students to combine cultural and social activities with learning.

Safe and Friendly Homestay

Our Homestay program will help students learn English more efficiently and give them a sense of being at home in a new environment.



Study Options



Sample Timetables

General English (SU) English for Health Professionals: GE (AM) + EHP (PM), Business English	
23 hours lessons + 5 hours Self Access	
AM Session 1 (Mon - Fri)	8:30 - 10:00
Break (15 mins)	10:00 - 10:15
AM Session 2 (Mon - Fri)	10:15 - 11:45
Lunch Break (1 hr)	11:45 - 12:45
PM Session (Mon - Thu)	12:45 - 2:50 (5 mins break)
Self Access (Mon - Fri)	2:50 - 3:50

General English (IN)	
20 hours lessons	
AM Session 1 (Mon - Fri)	8:30 - 10:00
Break (15 mins)	10:00 - 10:15
AM Session 2 (Mon - Fri)	10:15 - 11:45
Lunch Break (1 hr)	11:45 - 12:45
PM Session (Mon)	12:45 - 2:50 (5 mins break)
PM Session (Tue - Thu)	12:45 - 1:45

Cambridge, IELTS Preparation, and EAP	
23 hours lessons + 5 hours Self Access	
AM Session 1 (Mon - Fri)	8:30 - 10:00
Break (15 mins)	10:00 - 10:15
AM Session 2 (Mon - Fri)	10:15 - 11:45
Lunch Break (1 hr)	11:45 - 12:45
PM Session (Mon - Fri)	12:45 - 2:20
Self Access (Mon - Fri)	2:25 - 3:25

Evening Courses (General English and IELTS Preparation)	
20 hours lessons	
AM Session 1 (Mon - Fri)	16:30 - 17:30
Break (10 mins)	17:30 - 17:40
AM Session 2 (Mon - Fri)	17:40 - 19:10
Break (15 mins)	19:10 - 19:25
Session 3 (Mon - Fri)	19:25 - 20:55

- Self-Access refers to time after class where students are free to ask questions to the teachers.
- Attendance is optional.
- Timetables are subject to change.

There are pre-entry tests for EAP, English for Health Professionals, IELTS Preparation, Cambridge Preparation, Business English, TOEIC Option and Preparation Course for OET. Alternatively, a recent IELTS score is accepted for entry to these courses. Please contact us for more details.

The list of entry and exit points for EAP equivalent is listed below:

	Entry Point Level	Exit Point level
EAP 3	IELTS equiv. 5.5 or 6.0 / TOEFL 525+	IELTS equiv. 6.0 or 6.5
EAP 2	IELTS equiv. 5.0 / TOEFL 500	IELTS equiv. 5.5
EAP 1	IELTS equiv. 4.5 / TOEFL 475	IELTS equiv. 5.0



General English

General English

We will enable you to use English socially, for study and for work. You will learn the four skills of listening, speaking reading and writing in a lively way that gets you motivated. We will ask you to speak a lot and to get involved in a wide variety of activities. There will be many opportunities for you to practise what you have learned so that you become an "active" learner.

- Students will be assessed across all 4 skills once a month and individually counselled on their progress
- Class size is average 12 students
- Students may go on an educational excursion one day during the 4 week term
- Students will benefit from doing regular homework to consolidate their learning in class
- Students will have a trained teacher to assist them with self-access study after class
- Afternoon options will help students gain extra benefit from further study of specific skills

General English PM Subjects

Every two weeks you can choose a different afternoon subject which gives you the opportunity to focus on the areas that you would most like to improve and allows you to work on your preferred essential language skills. Option classes cover a variety of themes and special interest topics and let you choose your focus on speaking, listening and conversation, writing and reading or pronunciation, vocabulary or grammar.

You can choose option classes such as:

Vocabulary and Common Errors, Australian Life, Vocabulary and Grammar Extension, Effective Communication, Reading and Writing Effectively, Current Affairs, Pronunciation Clinic, Grammar Clinic, Real Listening and Speaking, Focus on Writing, Grammar in Use, Pronunciation and Conversation, Let's Speak, Writing Skills, Behind the News*

* These options are a guide only. Only certain options are available at any one time depending on demand.

We have the following four delivery modes:

Super Intensive

- Full Time 28 hours/week including 5 hours of supervised self-study (optional)
- Elementary to Advanced
- AM: Mon-Fri 8:30am-11:45am
PM: Mon-Thu 12:45pm-2:50pm
- AM: General English PM: Options
- Certificate: Presented upon completion of your course

Intensive

- Full Time 20 hours/week
- Elementary to Advanced
- AM: Mon-Fri 8:30am-11:45am
PM: Mon 12:45pm-2:50pm, Tue-Thu 12:45pm-1:45pm
- AM: General English PM: Options
- Certificate: Presented upon completion of your course

Evening Course

- Full Time 20 hours/week
- Elementary to Advanced
- Mon-Fri 4:30pm - 8:55pm
- Certificate: Presented upon completion of your course

Part Time (AM only)

- Part time 15 hours per week
- Elementary to Advanced
- Mon-Fri 8:30am-11:45am
- Certificate: Presented upon completion of your course

English Conversation Club with University of Sydney

A real challenge to meet other Australian students! Our weekly English Conversation Club helps students to practise English with students from The University of Sydney. This is a free program exclusive to SCE students which will help them build confidence in a real life setting.



"All the teachers were very individual and taught in different ways, and the variety was good because it meant I learnt more ways to express myself in English. This school gave me a good enough level of English to travel around and explore the beautiful country of Australia. Thank you!"

Joas Grivel
General English Graduate
Switzerland

English for Academic Purposes (EAP)

English for Academic Purposes (EAP)

EAP 1 (Pre-Intermediate)

EAP 2 (Intermediate)

EAP 3 (Upper Intermediate to Advanced)

English for Academic Purposes is a specific course of English study to help students intending to enter an educational institution in Australia. It helps them to acquire the necessary academic literacy to survive in any educational institution in Australia. Articulation pathways to various universities, colleges and TAFE are in place and each student is counselled by the EAP coordinator at various stages of their course of study to make the right decision for their future career paths.

- We have Pre-Testing before each course to make sure students are able to cope with their chosen level of study
- The College has articulations with about 30 Universities and Colleges throughout Australia giving students maximum flexibility in future career choices

- Flexible 6 week study modules means that students can join the class every 6 weeks
- Students are assessed in their various skills throughout the course and a final exam is administered at the end of each module
- A dedicated EAP coordinator will assist students with their decisions about future study in Australia
- Each level of EAP has a maximum of 16 students at any one time*
- Full Time 28 hours per week including 5 hours of supervised self-study (optional)
- Examinations: Mid-term and final
- Certificate: Presented upon completion of your course



Examination Preparation Courses

Cambridge FCE, CAE, CPE Preparation

The Cambridge Examinations we offer include: First Certificate, Advanced and Proficiency. There are entry exams for each level so that students study at the appropriate level of their English proficiency. Through a 12 week program, students dramatically improve in their major skills and especially in their grammatical competency. These exams are highly sought after by world-wide business organisations and universities. Successful attainment of these levels guarantees future success for students.

- SCE prides itself in on the delivery of excellence at all levels by highly qualified and trained teachers
- Students are assessed each week in some skills and given daily homework
- Students are tested and graded in 2 mock exams and are counselled individually after each battery of tests.
- Students have a trained Cambridge teacher after every class to assist with homework or to help clarify points not understood in class
- Students are given extra listening exercises to help them with the appropriate exam skills needed to be successful
- Classes are closed and limited to a maximum of 12 students
- Full Time 28 hours per week including 5 hours of supervised self-study (optional)
- AM: Mon-Fri 8:30am-11:45am
PM: Mon-Fri 12:45pm-2:25pm
- External examination dates: Refer to price list
- Exam: Cambridge Exam Entry is compulsory
- Certificate: Issued by University of Cambridge (UCLES) with examination pass results but the college provides its own certificate to students upon completion of the course

IELTS Preparation

IELTS is a highly popular course on offer at SCE at both the General and Academic Module levels. Students needing a specific IELTS score are given that special attention by qualified and experienced IELTS teachers.

- One skill is tested each week
- All the skills are tested once a month (every 4 weeks) and students counselled upon their strengths and areas for development
- Classes utilise a number of textbooks for study to give students maximum exposure to different strategies
- IELTS examiners are on hand for consultation by IELTS teachers to help them assist students with productive skill problems
- We offer a comprehensive after school, self-access library for students to practise their skills.
- Students can have the assistance of teachers during self-study time
- There is a limit of 16 students at any one time for students who choose the TOEIC option.*
- Full Time 28 hours per week including 5 hours of supervised self-study (optional)
- Intermediate and above
- Certificate: Issued by IELTS

TOEIC option as Examination Preparation (General English AM) + (TOEIC Option PM)

Students at Intermediate level or above can prepare for the TOEIC test in the TOEIC preparation class. TOEIC will be offered to students in a closed class, provided there are sufficient numbers at any one time, and be taught the basics learning for the test of English for International Communication.

- SCE is a recognised TOEIC test centre and as such students are able to take the test on campus
- Highly qualified and experienced TOEIC teachers and proctors at school
- Highly accredited teaching of the old and new TOEIC test modules
- Students can have the assistance of teachers during self-study time
- There is a limit of 16 students at any one time for students who choose the TOEIC option*
- Full Time 28 hours per week including 5 hours of supervised self-study (optional)
- Intermediate and above
- AM: General English + PM: TOEIC Option
- Certificate: Issued by ETS with examination results

SCE is an authorised centre for both Cambridge and the TOEIC test



English for Special Purposes

English for Health Professionals: General English (AM) + English for Health Professionals (PM)

This specialised course is for students interested in learning English for use in the Health Professions. It is aimed at foreign trained health professionals such as doctors, nurses, pharmacists, dentists, medical students, etc.

- Starting any Monday
- Interest in role plays which are taped to assist in patient/nurse/doctor relationships
- Every 12 weeks the school organises a visit to a hospital in Sydney for a tour of the various departments to enable them to see first hand the workings of an Australian Hospital and to analyse how the Australian Health System operates
- Each student may request a reference letter from their teacher for future career options
- The average class size at any one time will be 12 students
- Full Time 28 hours per week including 5 hours of supervised self-study (optional)
- Intermediate and above
- AM: General English + PM: English for Health Professionals
- Certificate: Presented upon completion of your course

Business English

This specialised course teaches students the language skills necessary for the business working environment. We will be offering Business Study as a whole day course, following the BEC Vantage course outline that is accepted world-wide as an international brand name for successful attainment of English competency within an international business environment. Students will be provided with the choice of sitting the Cambridge University BEC Vantage exam when they are offered in Sydney throughout the year.

- Highly qualified business teachers
- Highly Qualified TESOL teachers – Cambridge Certified
- Regular examinations and progress reports to individuals and corporations that are involved with the students' progress throughout the course.
- Chance of sitting the BEC Vantage Examination in Sydney
- Full Time 28 hours per week including 5 hours of supervised self-study (optional)
- Intermediate and above
- Certificate: Presented upon completion of your course

Preparation Course for Occupational English Test (OET)

The preparation course for the Occupational English Test OET is designed for health professionals from overseas who wish to be accredited by the respective health agencies to work in Australian settings.

The course is designed to assist students with the necessary language skills of reading, writing, speaking and listening. An advanced level of English is an essential pre-requisite to qualify for this course.

The course has been specifically designed by a medical doctor of many years experience both in a medical and a language teaching context. Students will be prepared to sit for the OET in designated test centres around Australia.

- Students from any medical background are eligible for this course
- Students will have the opportunity to sit mock tests and have continual feedback from their teacher
- 20 hours per week for 8 weeks
- Every opportunity to build skills up to IELTS 7 equivalent by the end of the course
- Small classes will mean more personal attention to student's individual needs
- Mon - Thr : 9:00am - 3:30pm
- Certificate: Presented upon completion of your course



"The dynamism of the lessons is something to experience for yourself. You never get bored and the whole staff make you feel comfortable and at ease, almost like being at home.....it's a great place to learn and be accepted for who you are..."

Florence Tomasetig
Business English
 France

Junior Courses

Preparation for High School Study

Specialised course which teaches students the language and study skills necessary for high school entry. Students will be assessed each week and also on every fourth week they will receive a detailed progress report. They will cover the basic skills in English for survival in Australian school settings as well as the English specific –subject content that will enable them to follow the main key learning areas in any English Language High School throughout the world.

- TESOL trained teachers to offer after school help during self-access
- Students monitored regularly and carefully for attendance in school times
- Pastoral care and support offered to all students during their stay with us
- Regular assessment
- A monthly detailed report and counselling of students on an individual basis
- An educational outing in Sydney every 3 to 4 weeks
- Sport twice a week
- Full time 30 hours per week including 5 hours of supervised homework time
- Elementary to Intermediate
- AM : Mon –Fri 8:30am–11:45pm
PM : Mon–Fri 12:45–3:45pm
- Age: 12 – 18 years old

SCE Study Tours – Challenging, Exciting and Fantasti

SCE has a long history of working with study tours from countries such as France, Japan, Korea, Brazil, Thailand, Italy and China. These groups range from as small as 10 to over 100 students.

SCE can cater for practically any number of students and any type of study tour integrating University visits to most of the major universities in Sydney and High School immersion programmes from half a day to full weeks.

Week day activities to any of the hundreds of attractions around Sydney. The Opera House, Sydney Harbour Bridge, Luna Park, Manly Beach, Darling Harbour, Sydney Tower, Ian Thorpe Aquatic Centre, Olympic Park, Bondi Beach and many more!

Weekend activities to the many beautiful locations around New South Wales include The Blue Mountains, Port Stephens, The Hunter Valley, The South Coast, Weekend Surf Camps and Ski Weekends. Travel tours to Melbourne and Brisbane including airport transfers, airfare bookings, and accommodation. SCE offers a range of flexible options which can be a combination of the above along with full time or part time classes. SCE study tours are flexible and fun.

“SCE High School Preparation class (HSP) is focussed mainly on English grammar, conversation, academic subjects and sport. We also had extra-curricular activities provided for us, such as going to the movies, going on excursions and there were opportunities to make friends outside of the classroom. Although my HSP class wasn’t easy, I kept going because I really enjoyed it. Eventually it meant that I could pass the examination for my future High School – Rose Bay Secondary College.”

Haruna Miwa
Preparation for High School Study
Japan





Sydney College of English Pty Ltd
trading as Sydney College of English

ABN: 15 003 307 408
CRICOS Provider: Code 00050A

The college makes every attempt to ensure correct information at the time of printing. Sydney College of English reserves the right to make changes to the information contained in this brochure at any time. For a current update on events, please visit: www.sce.edu.au

Printed July 2012

Acknowledgements

A special thanks to our students who agreed to pose for the photo shoot for this brochure.

Design and Art Direction

Jiro Takayasu

Photographers

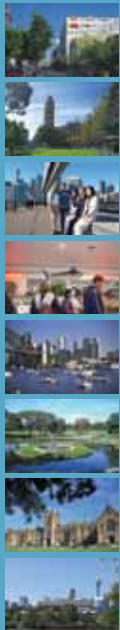
Anita Curtin
Sachiko Takiuchi

Writers

SCE marketing and academic team

Sydney College of English (SCE) – Your Guide to the Area

Walking Distance from SCE



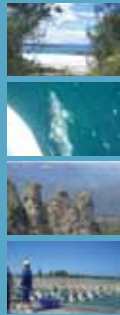
- 2 mins to Broadway Shopping Centre: supermarkets, post office, cinema, food court and countless clothing shops (G4)
- 2 mins to the nearest bus stop (G4, G5)
- 10 mins to Sydney Central Train Station (F8)
- 5 mins to the University of Sydney where students can use the library, sports facilities or cafes. (3 H)
- 5 mins to the University of Technology, Sydney. (G6, F7)
- 7 mins to TAFE Ultimo campus (E6)
- 10–15 mins to Sydney Fish Market (A3)
- 5 mins to Victoria Park with its 50 m pool (I3)
- 5 mins to Wentworth Park where SCE students play soccer every Wednesday. (D4)
- 8–10 mins to the Ian Thorpe Aquatic Centre with its 50 m pool and gym. (C5)
- 20 mins to Darling Harbour and the IMAX theatre – the biggest screen in the southern hemisphere. (A6, A7)
- 5 mins to Glebe Point Rd where students will find a variety of cafes and restaurants (F3)

By Train or Bus from SCE



- 15 mins by bus to Sydney Harbour Bridge and Sydney Opera House
- 40 mins by bus and train to the world famous Bondi Beach
- 40 mins by bus and train to Homebush Olympic Park
- 5 mins by bus to Pitt Street Mall Shopping Centre
- 50 mins by bus and ferry to Manly Beach

By Car or Tour Bus from SCE



- 20 mins by car to the Sydney Airport
- 2.5 hours drive to the Jervis Bay which has the most beautiful white sand beaches in the world
- 2.5 to 3 hours drive to Port Stephens where students can go Dolphin Watching by boat
- 2 hours by car to the Hunter Valley where students can do wine and cheese tasting
- 1.5 hours by car to the Blue Mountains
- 1.5 hours by car to the Entrance where students can watch a Pelican Show 365 days a year



35–39 Mountain Street, Broadway, Sydney 2007, Australia
 Tel: 61-2-92815211 Fax: 61-2-92815208
 Website: www.sce.edu.au E-mail: english@sce.edu.au