

# Live & learn

LEARNING ENGLISH IN IRELAND

*the*  
Horner  
School of  
English



1993-2013  
Celebrating 20 years in Business



# Welcome

The Horner School of English

The Horner School of English is owned and managed by the Horner family – Janice, Trevor, David, Pat and Colin. Located in the heart of Dublin, our Georgian buildings are within walking distance of St. Stephens Green and Grafton Street with its many shops, pubs, cafes and restaurants.

Open all year round we pride ourselves on our excellent mix of nationalities, small class groups, quality tuition, facilities, accommodation and service.



The Horner Team



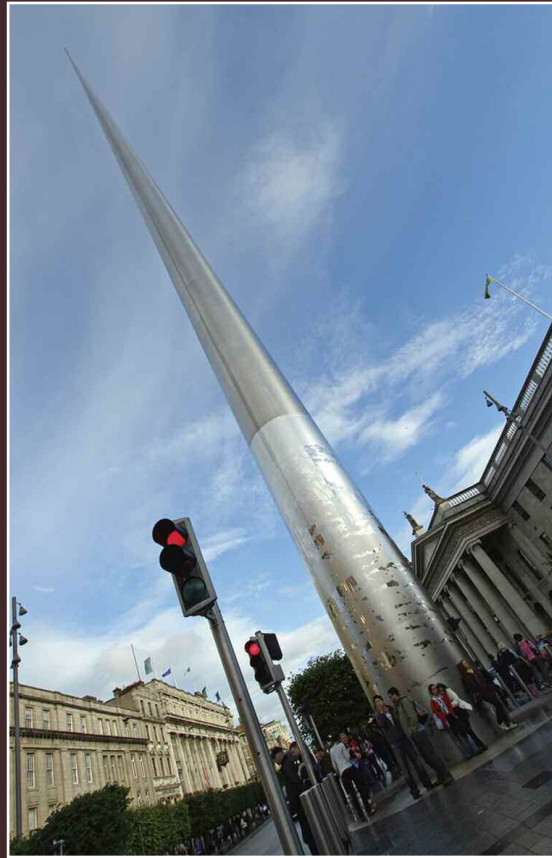
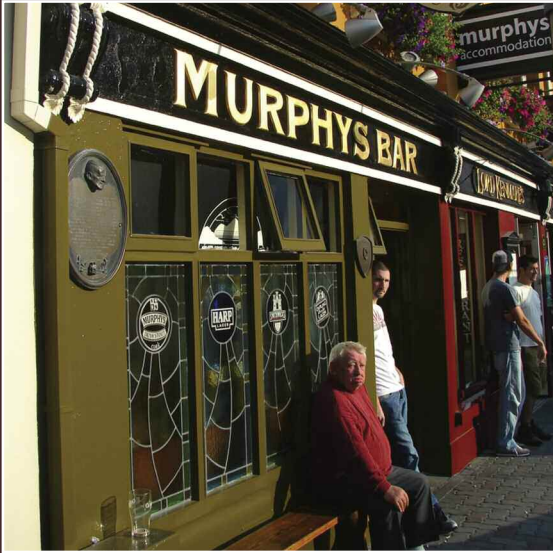


Class 9.30am

#### Why choose the Horner School of English?

- n Family owned and managed.
- n Highly trained native English teachers.
- n City centre location.
- n Smaller class groups.
- n International mix of nationalities.
- n Excellent facilities.
- n Choice of host family, city apartments / residences.
- n Tours & activities organised every week.

## Ireland & Dublin



Ireland, the traditional land of saints and scholars is accessible by air from all major European cities. With a population of five million people, Ireland enjoys one of the cleanest environments in Europe with a mild and temperate climate.

Irish people maintain the traditional values of warmth, friendliness and the importance of the family unit. We are a relaxed people, happy to share a drink, some conversation and invite you to join the "craic", an expression for having the time of your life.

Dublin, the home of Guinness, is an appealing capital city, exciting, busy and bright, with elegant stores, lively cafes and restaurants, museums, art galleries and theatres. A thriving capital for culture, Dublin is home to the renowned literary tradition of Shaw, Yeats, Joyce and Beckett. You will come to realise why George Bernard Shaw said "the best English is spoken in Ireland".





## Learn

The Horner School of English

### FIRST DAY / LEVELS

Courses are held at elementary, pre-intermediate, lower intermediate, upper intermediate & advanced levels. On arrival students are given a written and oral placement test and are placed in the class most appropriate for their level.

### PROGRESS

Class groupings and teaching methods are planned to allow students to integrate easily and make progress quickly. At the Horner School you will learn to communicate with confidence.

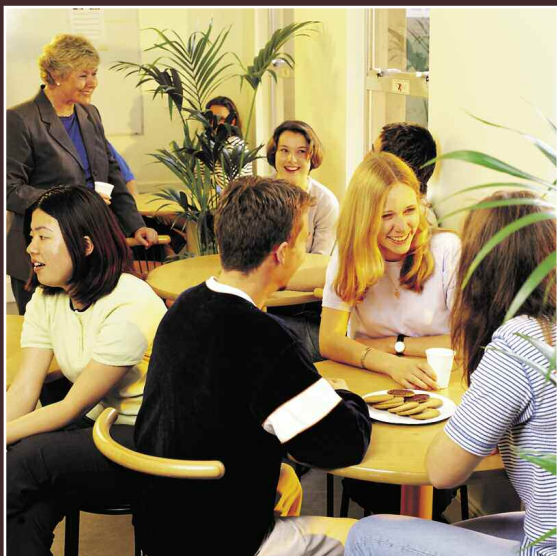
## Facilities



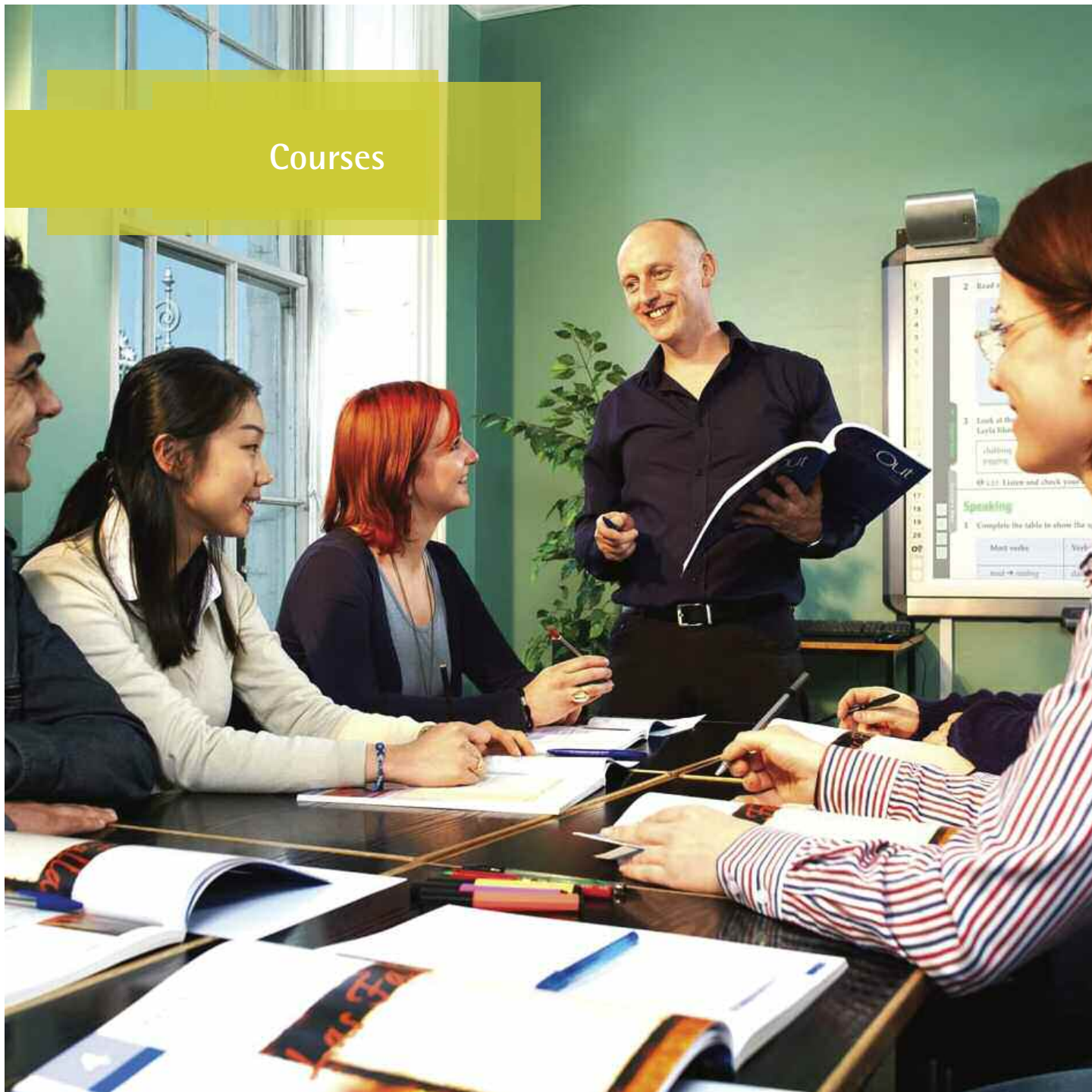


### EXCELLENT FACILITIES FOR LEARNING

- n School located in a beautiful Georgian House.
- n All classrooms fully equipped with Whiteboards, TV, DVD & CD players.
- n Majority of classrooms equipped with Interactive Multimedia Whiteboards.
- n Self-access study library.
- n Computer room with free high speed internet access.
- n Student common room, coffee shop and garden.
- n Free WI-FI internet access.



## Courses





## +Fluency std+

These 6 extra afternoon lessons focus on improving speaking and listening skills. This course must be taken in conjunction with the Standard Course.

**Timetable:** 14.00 - 16.45, Monday & Wednesday.

**Levels:** Elementary (A1), Pre-intermediate (A2), Lower intermediate (B1), Upper intermediate (B2) & Advanced (C1).

**Class size:** Maximum 12, average 8, Oct - June.  
Maximum 14, average 10, July - Sept.

**Enrolment:** Every Monday (all year round).

## +Business std+bus

These 6 extra afternoon lessons introduce the specialised language of business English and prepare the student to communicate effectively in a business environment. This course must be taken in conjunction with the Standard Course.

**Timetable:** 14.00 - 16.45, Monday & Wednesday.

**Levels:** Lower intermediate (B1), Upper intermediate (B2) & Advanced (C1).

**Class Size:** Maximum 12, average 8, Oct to June.  
Maximum 14, average 10, July - Sept.

**Enrolment:** Every Monday (all year round).

### WORK EXPERIENCE WXP

Arranged for 6 to 24 weeks. Min (B2) Level. All work is unpaid.

## Standard course std

The Standard Course aims to improve competence in general English. This course provides systematic practice in the four main areas of language learning: reading, writing, speaking and listening.

The first session concentrates on stabilising and improving present knowledge of grammar and vocabulary. The second session is fluency based, improving the communication skills of each client.

**Lessons:** 20 general English lessons per week.

**Timetable:** 09.30 - 13.10, Monday to Friday.

**Levels:** Elementary (A1), Pre-intermediate (A2), Lower intermediate (B1), Upper intermediate (B2) & Advanced (C1).

**Class size:** Maximum 12, average 8, Oct - June.  
Maximum 14, average 10, July - Sept.

**Enrolment:** Every Monday (all year round).

## +TOEFL / IELTS std+exam

These 6 extra afternoon lessons focus on preparing for the TOEFL or IELTS exam. This course must be taken in conjunction with the Standard Course.

**Timetable:** 14.00 - 16.45, Monday & Wednesday.

**Levels:** Upper intermediate (B2) & Advanced (C1).

**Class size:** Maximum 12, average 8, Oct - June.  
Maximum 14, average 10, July - Sept.

**Enrolment:** See price list for starting dates.

## +Cambridge std+cpc

These 6 extra afternoon lessons focus on preparing for the internationally recognised First Certificate (FCE) or the Cambridge Advanced Exam (CAE). The Horner School of English has a consistently high rate of success. This course must be taken in conjunction with the Standard Course.

**Timetable:** 14.00 - 16.45, Monday & Wednesday.

**Levels:** Upper intermediate (B2) & Advanced (C1).

**Class size:** Maximum 12, average 8, Oct - June.  
Maximum 14, average 10, July - Sept.

**Enrolment:** See price list for starting dates.

## Study

One to one courses at the Horner School of English

### SEMI INTENSIVE COURSE SIC/25 + SIC/30

We offer a choice of two Semi-Intensive Courses. These courses combine the 20 Standard Course group lessons with your choice of 5 or 10 individual lessons. The private lessons are taken over two or three afternoons and are tailored to suit your specific requirements.

**LESSONS:** 20 general + 5 OR 10 private lessons per week

**TIMETABLE:** 09.30 - 13.10, Monday to Friday  
14.00 - 16.05, Tuesday & Thursday (5 Private) or  
14.00 - 16.45, Tuesday, Thursday & Friday (10 private)

**LEVELS:** Elementary (A1), Pre-intermediate (A2), Lower intermediate (B1).  
Upper intermediate (B2) & Advanced (C1).

**CLASS SIZE:** Max 12, average 8, Oct - June  
Max 14, average 10, July - Sept

**ENROLMENT:** Every Monday (All year round)

### INDIVIDUAL EXECUTIVE COURSES

IEC/20 IEC/25 IEC/30 IEC/40

The Individual Executive Course is uniquely tailored to meet the requirements of the modern business and professional client. Individual courses are suitable for those who wish to specialise in a particular area of English and for those who wish to make rapid progress in a short period of time.

Prior to arrival, clients are encouraged to complete a detailed needs analysis questionnaire and to forward any materials which will assist in the design of the course. To date we have organised English programmes for a wide variety of industries including legal, medical, airline, telecommunications and many more.

Personal attention is assured throughout your stay. We offer a choice of 20, 25, 30 or 40 individual lessons per week. Tuition is taken Monday to Friday and courses are available throughout the year.







## Specialist

Small group courses  
at the Horner School  
of English

### PLATINUM COURSE **PLAT**

Suitable for professional mature students who prefer to study together in a smaller class situation. In addition to the main language skills, this course will also focus on English for work, travel & socialising.

**LESSONS:** 20 lessons per week.

**TIMETABLE:** 09.30 - 13.10, Monday to Friday

**LEVELS:** Lower intermediate (B1), Upper intermediate (B2) & Advanced (C1)

**CLASS SIZE:** Max 6, average 4.

**ENROLMENT:** See price list for starting dates.

### PLATINUM PLUS COURSE **PLAT +**

This course combines the dynamics of small group training with specific one to one lessons relating to your profession and / or your personal needs and objectives.

**LESSONS:** 20 lessons + 5 or  
10 private lessons per week.

**TIMETABLE:** 09.30 - 13.10, Monday to Friday.  
14.00 - 16.05, Tuesday & Thursday  
(5 private) Or  
14.00-16.45, Tuesday, Thursday & Friday  
(10 private).

**LEVELS:** Lower intermediate (B1), Upper  
intermediate (B2) & Advanced (C1).

**CLASS SIZE:** Max 6, average 4.

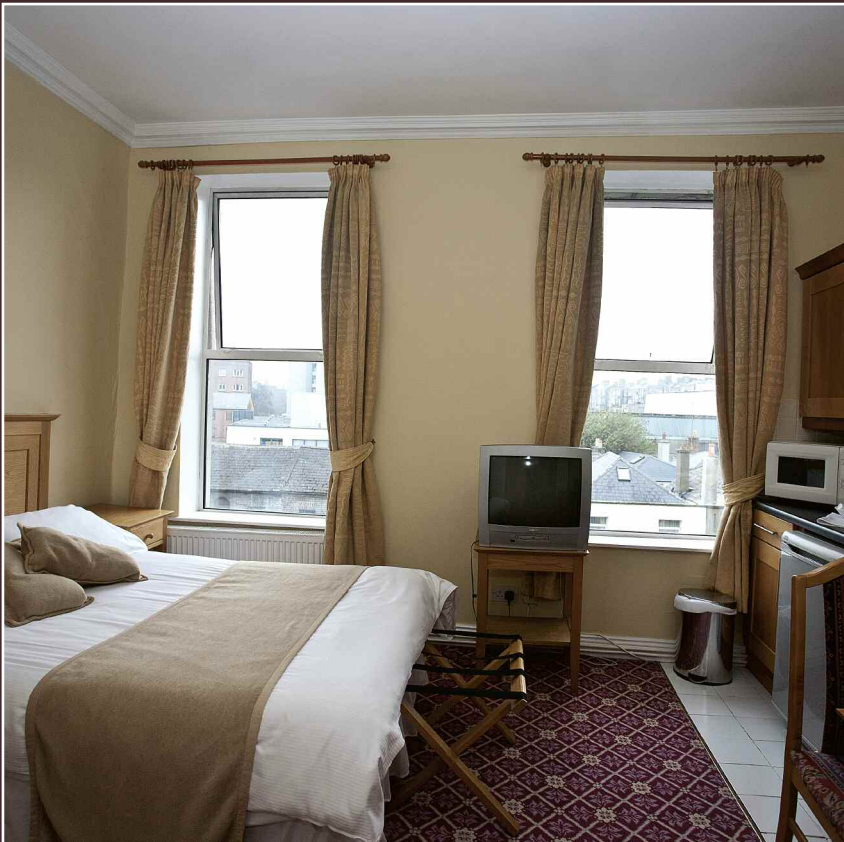
**ENROLMENT:** See price list for starting dates.







# Live



## HOST FAMILY

Irish families live in the suburbs of Dublin within a short bus or train journey of the school. All host families are inspected and carefully selected by a member of the Horner family. Irish host families deserve their reputation for being warm and welcoming.

All clients are accommodated on a single room basis during the period January to June and October to December. In summer, single room is available on request at a supplementary fee. We never place two students of the same mother tongue together, unless requested. Accommodation is arranged on a part board basis i.e. breakfast and evening meal, with all meals provided at the weekends. Internet access is available on request.

## CITY RESIDENCES

We offer a number of city residences within walking distance of the school. In most cases students are accommodated on a single room basis and have their own private bathroom. They are mainly self catering options with a fully equipped kitchen and living room shared by all guests. Internet access is available in most cases.

## CITY APARTMENTS

In some cases these apartments are just 2 minutes walk from the school. Studio, one and two bedroom apartments can be booked. All apartments are self contained. Internet access is available in the majority of apartments.





## TOURS & SOCIAL ACTIVITIES

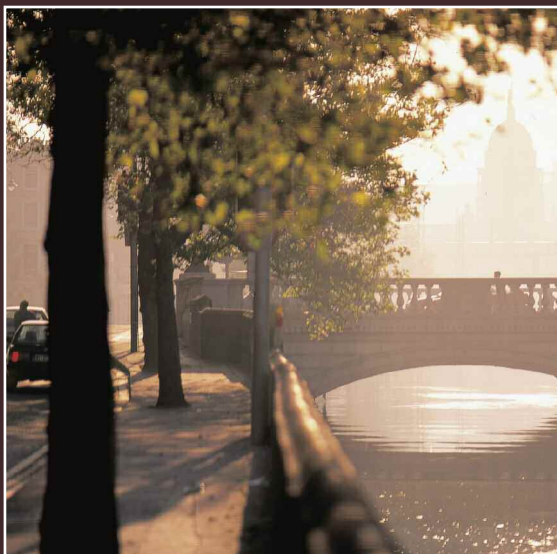
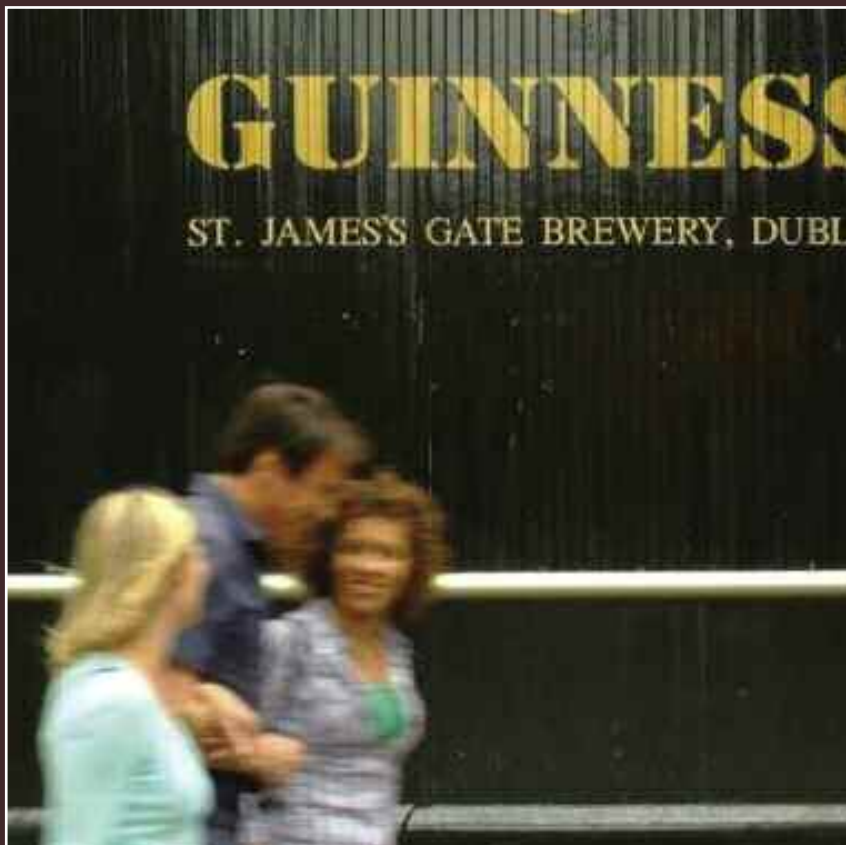
Social activities are a vital ingredient of your learning experience. At least two activities are arranged every week throughout the year from January to December. One weekend excursion is provided each month during off peak season. In the summer months of July, August & September we organise a weekend excursion every weekend. Extra activities such as music lessons, Irish dancing, horse riding, golf, tennis, sailing and many more can be booked on request.

### Two activities organised each week.

One weekend excursion each month - Off Peak.

One weekend excursion each week - Summer.

Life



## Info

### AIRPORT TRANSFERS

Arrangements can be made to meet students at Dublin airport. A charge is made for this service. Alternatively students may take a taxi from Dublin airport to their accommodation.

### CERTIFICATE OF ATTENDANCE

A Certificate of Attendance is presented to each student prior to his or her departure.

### CENTRES

The Horner School of English uses additional premises for tuition during peak periods.

### INSURANCE

All students should obtain insurance in their own country before departure.

### TRAVELLING IN DUBLIN

The fastest and most economical way to travel around Dublin is to purchase a student commuter ticket. This gives unlimited travel on Dublin city buses and suburban trains.

### VISAS

Students from EU countries do not require visas to enter Ireland. Students from non-EU countries may need a student visa. If you are in doubt then please contact your nearest Irish Embassy or ourselves here at the Horner School of English. Non-EU students may require medical insurance which can be arranged through the school on request.

