



THE UNIVERSITY  
OF AUCKLAND

NEW ZEALAND

Te Whare Wānanga o Tāmaki Makaurau



ENGLISH LANGUAGE ACADEMY  
—wholly owned by—  
THE UNIVERSITY OF AUCKLAND

# The University of Auckland English Language Academy





New Zealand is a modern, lively South Pacific country.

Its closest neighbour is Australia – 2000km, 3 hours away. New Zealand is safe, politically stable, English-speaking and an independent British Commonwealth country. It has a multi-cultural population of 4.5 million, most of British descent. This thriving society is influenced by more than 100 cultures, particularly that of its indigenous Maori people, which adds an inimitable flavour.

Auckland is the gateway to New Zealand.

As New Zealand's most cosmopolitan city, Auckland's dynamic cultures, plentiful public parks, numerous beaches and public swimming pools, unique geography and large areas of native forest accommodate a healthy, active, fascinating way of life. International surveys consistently vote Auckland one of the world's best cities for lifestyle.

You can expect to meet people from all over the world in Auckland – from Europe to Asia, Africa to the Americas. A walk down Queen Street in Auckland's central business district is a truly international experience.

As New Zealand's biggest city (1.5 million people) Auckland is just a few hours' drive from the scenic delights of sub-tropical Northland where the Tasman Sea meets the Pacific Ocean, the ski fields and rivers of the central North Island and the secluded beaches of the Coromandel Peninsula. Outdoor living is a way of life in Auckland's generally mild, temperate climate.



# The University of Auckland English Language Academy (ELA)

The University of Auckland English Language Academy (ELA) provides high-quality English language programmes for international students interested in pursuing undergraduate and postgraduate degrees, as well as specialist English and language teacher training courses.

## The English Language Academy:

- Is part of The University of Auckland, New Zealand's largest university.
- Offers a multicultural learning environment where you can study and make friends with students from over 35 countries.
- Is located adjacent to The University of Auckland's city campus in downtown Auckland.
- Have purpose-built modern classrooms to cater for over 500 students in a spacious environment.
- Employs highly-qualified, experienced and dedicated teachers.
- Provides a seamless English language pathway into The University of Auckland. The Foundation Certificate in English for Academic Purposes (FCert EAP) is a CUAP (Committee on University Academic Programmes) approved certificate.
- Offers high-quality student support and pastoral care services.
- Provides homestay and apartment living options.
- Has a study centre open seven days a week with 90 computers.
- Provides students with state-of-the-art computer facilities and well-equipped student lounges.
- Is New Zealand's biggest International English Language Testing System (IELTS) test centre and offers IELTS preparation courses.



# The University of Auckland

The University of Auckland is New Zealand's leading research university. Established in 1883, it provides a world-class education for 40,000 students, including more than 5,100 internationals from 90 countries. The university is a vibrant, cosmopolitan community with over 2,000 academic staff and as many general staff.

## The University of Auckland:

- Is ranked in the top 1% of the world's universities.
- Is New Zealand's leading research institution with the largest number and highest concentration of top-ranked researchers.
- Is New Zealand's only member of the Association of Pacific Rim Universities and Universitas 21, an association of major international research-intensive universities.
- Offers more than 150 innovative programmes over a wide range of subject areas in the following eight faculties: Arts, Business, National Institute of Creative Arts & Industries, Education, Engineering, Law, Medical & Health Sciences, Science. There is also a School of Theology.
- Is New Zealand's most internationally recognised university across a range of disciplines. The University of Auckland Business School is the only New Zealand business school to be internationally accredited by all three of the world's leading associations of business and management schools – AACSB International (USA), EQUIS (Europe) and AMBA (UK).
- Offers quality teaching in a stimulating campus environment in the heart of New Zealand's largest and most cosmopolitan city. The convenient location of the city campus offers easy access to the city's shops, markets, cinemas, galleries, public libraries and restaurants.
- Has the largest university library in New Zealand as well as the resources, student facilities and support services to help you succeed.
- Can show you other parts of the world through overseas exchange programmes with more than 90 universities in 25 countries.

# NZ University Education System and Pathway Overview

In New Zealand, students are taught in an English-speaking environment. International students will share classes with New Zealanders and be encouraged to participate in all aspects of learning. New Zealand operates a British-based system that is recognised overseas, so students can move between institutions in New Zealand or other English-speaking countries whilst they study.

## Universities

- New Zealand universities are research based and government funded
- They offer courses from certificate level through to doctorates
- The academic year is from March to November
- A July start date may be available for some courses
- Summer semester courses (January to March) may be available.

## English Language Requirements at Tertiary Institutions

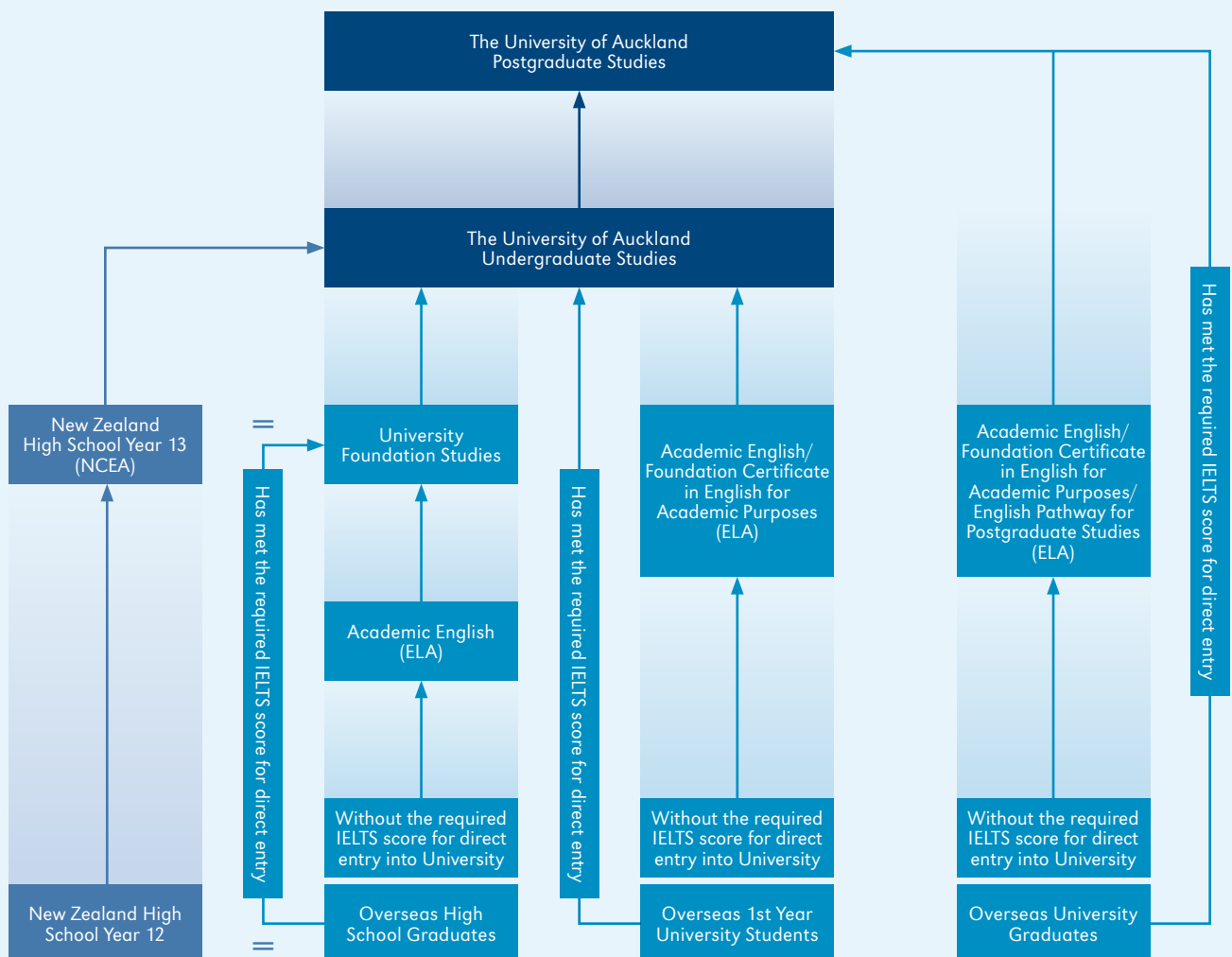
**Most institutions will ask for original documents or certified photocopies of one of the following:**

- Applicants who have a conditional offer from The University of Auckland or any other New Zealand tertiary institution will be considered for entry to the Foundation Certificate in English for Academic Purposes (FCert EAP) or the 10-week fast-track English Pathway for Postgraduate Studies (EPPS) at The University of Auckland English Language Academy (ELA).
  - \* For both courses, students who gain a C-/C/C+ grade are deemed to have achieved an IELTS equivalency of 6.0, which will allow direct entry into most undergraduate level programmes. Students who gain a B-/B/B+ grade are deemed to have achieved an IELTS equivalency of 6.5 and students who gain an A-/A/A+ grade are deemed to have achieved an IELTS equivalency of 7.0, which will allow entry into most postgraduate level programmes unless stated otherwise.
- International English Language Testing System (IELTS) band score of 6 with no band less than 5.5 is used at many tertiary institutions in New Zealand, Australia, the United Kingdom and North America for most undergraduate programmes and a score of 6.5 with no band less than 6 for most postgraduate programmes. It assesses your ability to read, write, speak and listen in academic or general training contexts. It is developed and managed by the University of Cambridge, the British Council and IDP Education Australia.
- A TOEFL (Princeton Test of English as a Foreign Language) paper test (not the computer test) score of 550 and a TWE (Test of Written English) score of 4 (paper-based test) or 213, Essay rating 4.0 (computer-based test).
- A pass in English in the General Certificate of Education (GCE) 'O' level examination.
- A pass in English in the New Zealand Bursary examination or NCEA Level 3.
- Some other recognised English proficiency test.





# NZ Education and ELA Pathway Chart





# ELA Programmes

## Academic English (AE)

The Academic English (AE) programme is offered at a variety of levels and is designed to prepare students for academic study at tertiary level. Academic English is a successful pathway programme for university foundation studies, including The University of Auckland Certificate in Foundation Studies at Academic Colleges Group (ACG), as well as the Foundation Certificate in English for Academic Purposes (FCert EAP).

The Academic English programme focuses on the language and skills required for successful study at tertiary level, including lectures, seminars, tutorials and research. The programme uses a communicative and integrated approach, and includes:

- Grammar and sentence structure
- Essay and report writing
- Reading academic texts
- Research skills
- Critical thinking
- Listening to lectures and note-taking
- Presentation skills and communication techniques
- Pronunciation.

The Academic English programme develops independent learning strategies. Independence is encouraged in the online research component which can be accessed online externally.

Academic English is offered from the Pre-Intermediate level through to Advanced. Each course lasts 10 weeks with 200 contact hours and an additional 20 hours of optional weekly workshops to support the main programme.

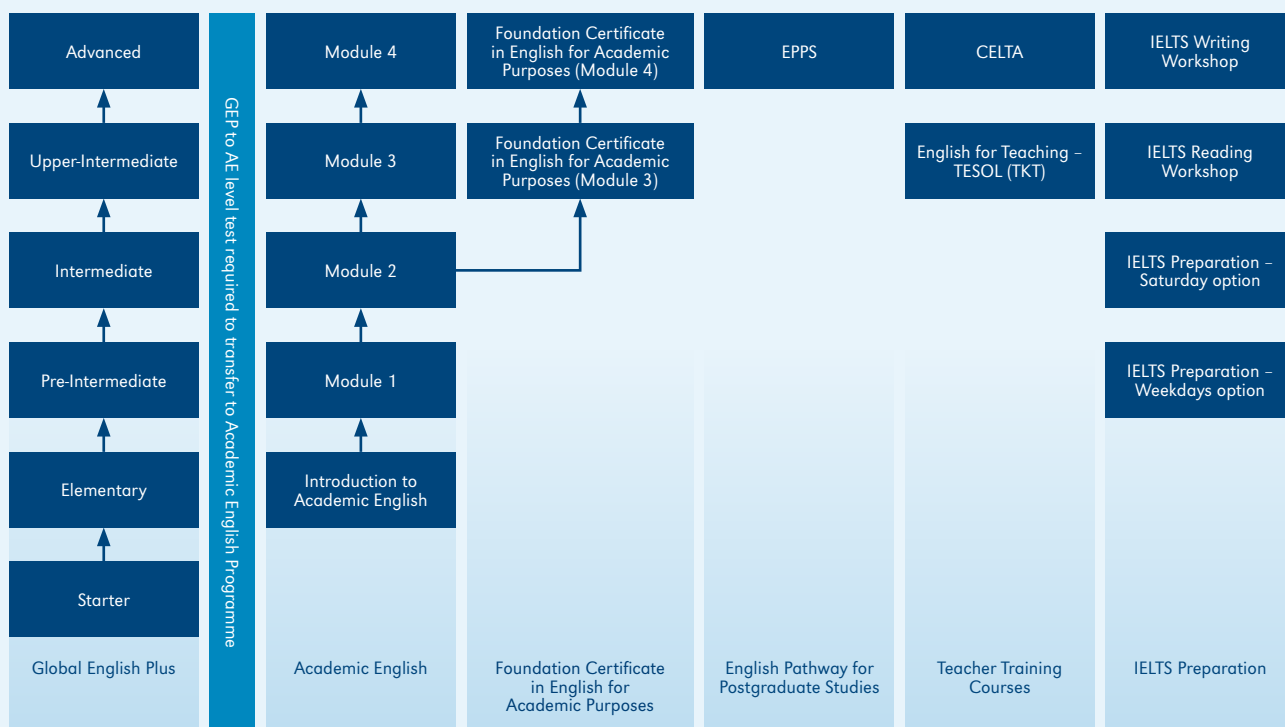
Starting at the Intermediate level, Academic English students will have an option to combine the Academic English study with either IELTS Preparation or University Preparation. At the Advanced level, students will have an option to combine the Academic English study with either IELTS Preparation or English for Specific Academic Purposes (ESAP).

IELTS Preparation takes 100 hours of intensive study of key skills and strategies associated with the IELTS exam.

University Preparation takes 100 hours of intensive study designed to prepare students with the language and skills to participate in university seminars and tutorials, as well as research skills that culminate in a presentation on their research essay.

English for Specific Academic Purposes will have three streams, based on student demand: Humanities, Commerce, and Science & Engineering. These streams will prepare students for undergraduate or postgraduate study in their chosen faculties. The content of these streams has been developed in conjunction with the faculties and reflects the academic expectations and assignments set by the lecturers.





## Foundation Certificate in English for Academic Purposes (FCert EAP)

The Foundation Certificate in English for Academic Purposes is a direct entry programme to university study. Students who successfully complete the programme with the required grade are not required to take IELTS or any other similar test.

The Foundation Certificate in English for Academic Purposes is a 21-week Academic English programme for students who have received a conditional offer of place from The University of Auckland or other New Zealand tertiary institution,\* but do not meet the English language entry requirements. Students enrolled in the Foundation Certificate in English for Academic Purposes programme are enrolled in The University of Auckland and enjoy all of the benefits of a University of Auckland student.

Students may use an academic IELTS test score to apply for this programme (Undergraduate students must provide an overall score of 5.0, with no less than 5.0 in Writing and Postgraduate students must provide an overall score of 5.5, with no less than 5.5 in Writing. The IELTS test score must be no more than 12 months old from the programme commencement date).

Students who do not provide an IELTS score or if the IELTS score provided does not meet the above requirements, will receive an Offer of Place for the Academic English programme. All students are required to take the ELA Placement Test which is conducted on the Thursday before the programme commencement. Students who do not have the required IELTS score will be informed if they have met the requirements into the

FCert EAP programme from the result of the Placement Test. If so, they will be issued a new offer for the FCertEAP programme.

*\*This is decided on a case-by-case basis. Please liaise with the institution that has given you a conditional offer of place for confirmation on the acceptance of the FCert EAP results as the IELTS equivalent for entry into the intended programme.*

## English Pathway for Postgraduate Studies (EPPS)

The English Pathway for Postgraduate Studies is a 10-week direct entry English language preparation pathway to The University of Auckland for postgraduate studies. The pathway combines Advanced Academic English with English for Specific Academic Purposes. Students who successfully complete the pathway with the required grade are not required to take IELTS or any other similar test. This pathway is suitable for students who have a conditional offer of place from The University of Auckland for postgraduate studies. Students must have a valid IELTS test score of no more than 0.5 away from the overall band as required by the university programme, no less than 5.5 in the Reading, Speaking and Listening bands and no less than 6.0 in the Writing band, unless stated otherwise by the University. The IELTS test score must be no more than 12 months old from the programme commencement date.



## Global English Plus (GEP)

The Global English Plus programme is designed to help improve and understand the key aspects of English grammar, structures and rules. This programme is also suitable for those who need to improve their English before moving into the Academic English programme.

Students will study language structure, listening skills, reading skills, speaking skills, vocabulary, fluency, and accuracy in writing. It caters for students from Starter to Advanced levels of English. Students can personalise their study by selecting from various options for half of their study time, including focussing on business English, IELTS, writing skills and speaking skills. Most programmes include learning sessions in our five computer labs.

The Global English Plus programme includes 20 core hours of tuition with two additional workshops. Workshops give students the opportunity for focused attention on particular areas of language learning. Workshops are scheduled in the morning or afternoon each day depending upon whether students are in session one or session two. Students have a choice of workshops to meet their specific needs and learning goals. Workshop themes will change from time to time.

### Typically they include:

- Language development – focus on vocabulary and grammar
- Intensive writing – mechanics and styles
- Intensive speaking – pronunciation and skills
- Intensive listening and reading skills.



*\* Please note that attending the workshops is voluntary.*

The Global English Plus programme starts every Monday throughout the year, except for New Zealand public holidays. All students are required to do the ELA Placement Test on their first day. The Offer of Place will have the start date. Class sessions are split into morning and afternoon sessions, depending on the students' level.

## English for Teaching – TESOL (TKT)

The English for Teaching-TESOL (TKT) is a 10-week programme designed to enhance students' English language awareness and ability, and to prepare them for the Cambridge Teaching Knowledge Test (TKT) and TKT Practical Test. The ELA is the first school in Auckland to administer the TKT Practical Test. The programme provides students with comprehensive grounding to become a teacher of English, and prepares them for the Cambridge TKT.

The Cambridge TKT is divided into three modules and each module can be taken separately. The ELA has designed a programme that encompasses all three core modules, the TKT written examination and the TKT practical test. Each of the core modules consists of a multiple choice test of 80 questions, lasting 80 minutes. The practical test consists of 40 minutes of assessed teaching practice.

### The tests cover:

- Language and background to language learning and teaching
- Planning lessons and use of resources for language teaching
- Managing the teaching and learning process
- Content and Language Integrated Learning (CLIL)
- Knowledge about Language (KAL)
- Classroom management and teaching skills.

This qualification is highly regarded and internationally recognised for being both accessible and flexible. The course covers knowledge of ESOL teaching. Students will plan and teach mini lessons (microteaching) with their classmates, and observe experienced teachers teaching regular classes within ELA.

## Certificate in English Language Teaching to Adults (CELTA)

Teaching English to speakers of other languages can be a highly rewarding career, offering students the chance to live and work abroad. The Cambridge CELTA is the most widely recognised initial qualification in teaching English as a foreign language, recognised by language schools in dozens of countries around the world. Over 10,000 candidates gain the qualification each year. The course provides the necessary skills to get work in a language school anywhere. Great importance is attached to quality control and this is assured in a number of ways, including approval and moderation by Cambridge ESOL, part of the world famous University of Cambridge.

### There are five main units of learning:

- Learners and teachers, and the teaching and learning context
- Language analysis and awareness

- Language skills: reading, listening, speaking and writing
- Planning and resources for different contexts
- Developing teaching skills and professionalism.

The course teaches the principles of effective teaching and provides a range of practical skills for teaching English to adult learners. The course is very practical with a heavy emphasis on performance in observed and assessed teaching practice sessions. Candidates teach 6 hours of assessed lessons over eight to nine lessons. Teaching practice is completed at two different levels with candidates teaching volunteer groups of students. Assessment is based on overall performance at the end of the 6 hours.

## ELA – Authorised Cambridge ESOL Centre

The University of Auckland English Language Academy is an Open Centre, which is authorised to run examinations for all candidates, including those who are not taking a preparation course at the ELA.

## IELTS and Preparation Courses

The ELA is an accredited IELTS test centre and New Zealand's largest provider of the IELTS Examination.

The IELTS test is taken across 135 countries by over 1,400,000 candidates. More than 6,000 educational institutions, government agencies and professional organisations around the world recognise IELTS scores as a valid indicator of ability to communicate in English. All tertiary institutions in New Zealand, Australia, Canada and the UK accept the IELTS scores as an entry requirement. IELTS is also accepted by over 1,000 tertiary institutes and professional organisations in the USA.

The ELA also provides preparation courses, and targeted workshops for higher level candidates. The IELTS preparation course is a specialised course with an exam focus linked to the required listening, reading, writing and speaking modules. Candidates will learn strategies on how to approach each module and develop the necessary skills through guided exercise. With thorough training, students will be more confident to tackle each task type, from analysing exam questions to writing answers. IELTS candidates get extensive advice and exam tips to deal with test day.





# Group and Customised Programmes

These programmes and study tours suit groups of ten or more. These include:

- Groups integrated into Global English Plus classes, customised closed programmes or a mixture of both.
- Groups integrated into Academic English, Foundation Certificate in English for Academic Purposes or English for Teaching programmes.

Most programmes have flexible start dates and durations. All programmes can include weekend excursions to New Zealand locations.

## Customised Closed Programmes

Customised closed programmes only include members from the participating company, institute or organisation. They have an intensive focus on English for Specific Purposes and more task-based activities including:

- ESP – English for Engineering, English for Business and English for Cultural Understanding, etc.
- ESP – English for Teaching (teacher training for adults and young learners)
- ESP – English for Academics and Administrators
- ESP – English for Volunteering

### Advantages of coming as a group include:

- Access to customised courses centred on universities' and students' needs
- Potential links to The University of Auckland's various faculties and departments
- Dedicated groups coordinator
- Extensive administrative support.

## Sample of Popular Customised Programmes

### English for Teaching

- Communicative language teaching
- Task-based learning
- New Zealand education system
- Teaching young learners
- Language analysis and phonology
- Teaching large monolingual classes
- Teaching integrated skills
- Using drama and role-play

### English for Academics and Administrators

- Needs analysis
- Presenting lectures
- Pronunciation and speaking fluently
- Listening and speaking strategies
- Reformulating strategies
- Grammar review and practice
- Communication techniques
- Social English

### English for Cultural Understanding

- New Zealand culture and history
- New Zealand education
- New Zealand youth culture
- Integration with high school students
- Integration with university students
- Research and presentation skills
- Critical analysis and reflection

# STUDENT LOUNGE



## Facilities and Services

- New Zealand's largest IELTS test centre
- Comprehensive pre-arrival and arrival orientation
- ELA online level test
- Academic counselling and support
- Three student lounges
- Study centre
- Free Internet and WIFI
- Social activities
- Accommodation placement
- Airport transfer
- Authorised centre for online visa application (for onshore students)
- Medical and travel insurance
- Prayer room for Muslim students.



## International Code of Practice

The University of Auckland English Language Academy (ELA) has agreed to observe and be bound by the Code of Practice for the Pastoral Care of International Students published by New Zealand's Ministry of Education. Copies of the Code are available on request from the ELA or from the Ministry's website at: [www.minedu.govt.nz](http://www.minedu.govt.nz).

## Immigration and Visas

All students studying at the ELA must have a valid visa. There are different types of visa, and the country you come from will determine which type you need. However, all students who want to study for more than three months require a student visa. The ELA will ask to see your visa on your first day. Full details of visa and permit requirements, advice on rights to employment in New Zealand while studying, and reporting requirements are available through the New Zealand Immigration Service and can be viewed on their website at: [www.immigration.govt.nz](http://www.immigration.govt.nz). The ELA is also an authorised centre to help process student visas online. This facility is only available to students who are already in the country or studying at the ELA.

## Orientation

On the first day, after testing, students will attend a comprehensive orientation and receive an ELA student handbook. Students will be assisted with bus passes, medical facilities, banking and general information for settling into life in New Zealand.

## Medical and Travel Insurance

International students must have appropriate current medical and travel insurance while studying in New Zealand. As medical and travel insurance are compulsory, the ELA will automatically invoice you for insurance when you apply to study. Should you not wish to use the ELA-arranged insurance, please notify the ELA. In this instance you must provide the ELA with the name of your insurance company and the policy number.

## Transport from the Airport

On arrival, the ELA can provide a meet-and-greet service if requested. The ELA provides a free one-way airport transfer if the student is going into an ELA arranged homestay or Empire Apartment.

## Students Under 18

Under the Code of Practice for Pastoral Care of International Students, the ELA has additional responsibilities for those students aged under 18 years to ensure their safety in New Zealand. If you are under 18, we will send you a special agreement that outlines the conditions of study at the ELA. Students under 18 must have parental consent to study in New Zealand and must abide by the regulations set down by the ELA. The ELA will regularly communicate with parents or the nominated guardians of students under 18 on matters relating to study and personal welfare as part of our legal commitments under the Code of Practice for Pastoral Care of International Students.

## Terms and Conditions of Enrolment

Please refer to: [www.ela.auckland.ac.nz](http://www.ela.auckland.ac.nz) for the latest terms and conditions of enrolment at the ELA. This information is also on the application form and is given to you with your Offer of Place. Students are bound by these terms once they have paid their tuition fees.